

Product Datasheet

Ras Antibody (HL10) - G12D Mutant NBP3-13647

Unit Size: 100 ul

Store at 4C short term. Aliquot and store at -20C long term. Avoid freeze-thaw cycles.

www.novusbio.com



technical@novusbio.com

Protocols, Publications, Related Products, Reviews, Research Tools and Images at:
www.novusbio.com/NBP3-13647

Updated 8/28/2023 v.20.1

Earn rewards for product
reviews and publications.

Submit a publication at www.novusbio.com/publications

Submit a review at www.novusbio.com/reviews/destination/NBP3-13647



NBP3-13647

Ras Antibody (HL10) - G12D Mutant

Product Information

Unit Size	100 ul
Concentration	Concentrations vary lot to lot. See vial label for concentration. If unlisted please contact technical services.
Storage	Store at 4C short term. Aliquot and store at -20C long term. Avoid freeze-thaw cycles.
Clonality	Monoclonal
Clone	HL10
Preservative	No Preservative
Isotype	IgG
Purity	Protein A purified
Buffer	PBS

Product Description

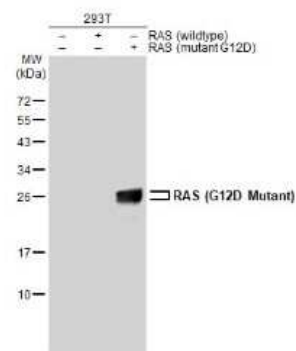
Description	Centrifuge briefly prior to opening.
Host	Rabbit
Species	Human, Mouse
Immunogen	Synthetic peptide corresponding to human Ras (G12D Mutant).

Product Application Details

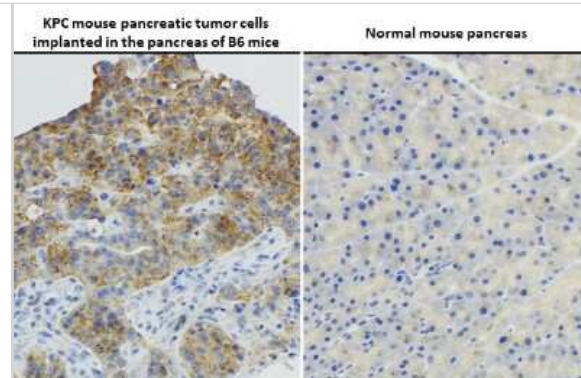
Applications	Western Blot, Immunocytochemistry/ Immunofluorescence, Immunohistochemistry, Immunohistochemistry-Paraffin
Recommended Dilutions	Western Blot 1:500-1:3000, Immunohistochemistry 1:25-1:100, Immunocytochemistry/ Immunofluorescence Assay dependent, Immunohistochemistry-Paraffin 1:25-1:100

Images

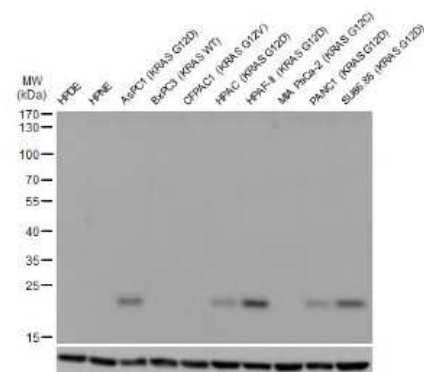
Western Blot: Ras Antibody (HL10) - G12D Mutant [NBP3-13647] - Non-transfected (-) and transfected (+) Various whole cell extracts (30 ug) were separated by 12% SDS-PAGE, and the membrane was blotted with Ras (G12D Mutant) antibody [HL10] (NBP3-13647) diluted at 1:3000. The HRP-conjugated anti-rabbit IgG antibody (NBP2-19301) was used to detect the primary antibody.



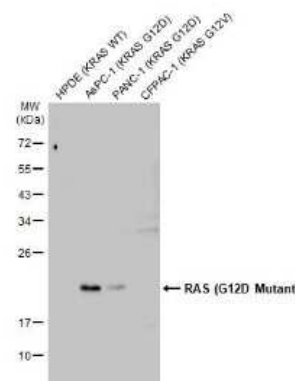
Immunohistochemistry-Paraffin: Ras Antibody (HL10) - G12D Mutant [NBP3-13647] - Ras (G12D Mutant) antibody [HL10] detects Ras (G12D Mutant) protein at by immunohistochemical analysis. Sample: Paraffin-embedded KPC mouse pancreatic tumor cells implanted in the pancreas of B6 mice (left) and normal mouse pancreas (right). Ras (G12D Mutant) stained by Ras (G12D Mutant) antibody [HL10] (NBP3-13647) diluted at 1:75. Antigen Retrieval: Citrate buffer, pH 6.0, 40 min



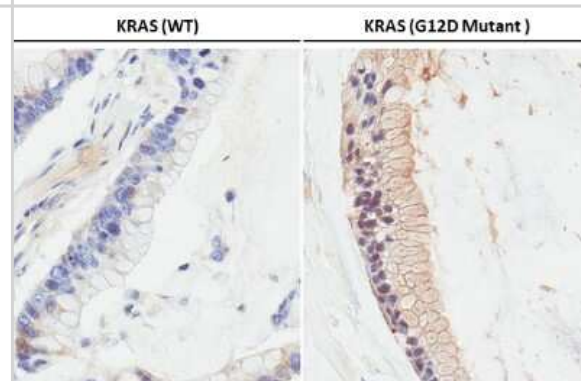
Western Blot: Ras Antibody (HL10) - G12D Mutant [NBP3-13647] - Various whole cell extracts were separated by SDS-PAGE, and the membrane was blotted with Ras (G12D Mutant) antibody [HL10] (NBP3-13647) diluted at 1:1000.



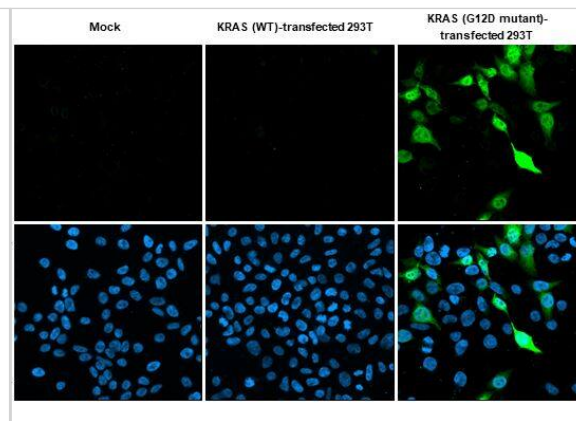
Western Blot: Ras Antibody (HL10) - G12D Mutant [NBP3-13647] - Various whole cell extracts (30 ug) were separated by 12% SDS-PAGE, and the membrane was blotted with Ras (G12D Mutant) antibody [HL10] (NBP3-13647) diluted at 1:1000. The HRP-conjugated anti-rabbit IgG antibody (NBP2-19301) was used to detect the primary antibody, and the signal was developed with Trident femto Western HRP Substrate.



Immunohistochemistry-Paraffin: Ras Antibody (HL10) - G12D Mutant [NBP3-13647] - Ras (G12D Mutant) antibody [HL10] detects Ras (G12D Mutant) protein by immunohistochemical analysis. Sample: Paraffin-embedded human wild-type (left) and KRas G12D mutant (right) pancreatic tumor. Ras (G12D Mutant) stained by Ras (G12D Mutant) antibody [HL10] (NBP3-13647) diluted at 1:50.



ICC/IF: Ras Antibody (HL10) - G12D Mutant [NBP3-13647] - Mock and transfected 293T cells were fixed in 4% paraformaldehyde at RT for 15 min. Green: RAS (G12D Mutant) stained by RAS (G12D Mutant) antibody [HL10] diluted at 1:500. Blue: Fluoroshield with DAPI.





Novus Biologicals USA

10730 E. Briarwood Avenue
Centennial, CO 80112
USA
Phone: 303.730.1950
Toll Free: 1.888.506.6887
Fax: 303.730.1966
nb-customerservice@bio-techne.com

Bio-Techne Canada

21 Canmotor Ave
Toronto, ON M8Z 4E6
Canada
Phone: 905.827.6400
Toll Free: 855.668.8722
Fax: 905.827.6402
canada.inquires@bio-techne.com

Bio-Techne Ltd

19 Barton Lane
Abingdon Science Park
Abingdon, OX14 3NB, United Kingdom
Phone: (44) (0) 1235 529449
Free Phone: 0800 37 34 15
Fax: (44) (0) 1235 533420
info.EMEA@bio-techne.com

General Contact Information

www.novusbio.com
Technical Support: nb-technical@bio-techne.com
Orders: nb-customerservice@bio-techne.com
General: novus@novusbio.com

Products Related to NBP3-13647

HAF008	Goat anti-Rabbit IgG Secondary Antibody [HRP]
NB7160	Goat anti-Rabbit IgG (H+L) Secondary Antibody [HRP]
NBP2-24891	Rabbit IgG Isotype Control

Limitations

This product is for research use only and is not approved for use in humans or in clinical diagnosis. Primary Antibodies are guaranteed for 1 year from date of receipt.

For more information on our 100% guarantee, please visit www.novusbio.com/guarantee

Earn gift cards/discounts by submitting a review: www.novusbio.com/reviews/submit/NBP3-13647

Earn gift cards/discounts by submitting a publication using this product:
www.novusbio.com/publications

