

Product Datasheet

Zika Virus (H/PF/2013) Envelope Antibody (GT363) NBP3-13587

Unit Size: 100 ul

Store at 4C short term. Aliquot and store at -20C long term. Avoid freeze-thaw cycles.

www.novusbio.com



technical@novusbio.com

Protocols, Publications, Related Products, Reviews, Research Tools and Images at:
www.novusbio.com/NBP3-13587

Updated 6/14/2023 v.20.1

Earn rewards for product
reviews and publications.

Submit a publication at www.novusbio.com/publications

Submit a review at www.novusbio.com/reviews/destination/NBP3-13587



NBP3-13587**Zika Virus (H/PF/2013) Envelope Antibody (GT363)**

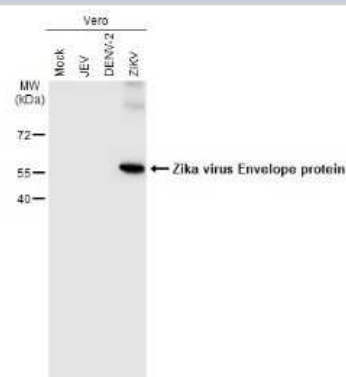
Product Information	
Unit Size	100 ul
Concentration	Concentrations vary lot to lot. See vial label for concentration. If unlisted please contact technical services.
Storage	Store at 4C short term. Aliquot and store at -20C long term. Avoid freeze-thaw cycles.
Clonality	Monoclonal
Clone	GT363
Preservative	No Preservative
Isotype	IgG2b
Purity	Protein A purified
Buffer	PBS
Target Molecular Weight	54 kDa

Product Description	
Description	Centrifuge briefly prior to opening.
Host	Mouse
Species	Virus
Reactivity Notes	Zika virus
Immunogen	Carrier-protein conjugated synthetic peptide encompassing a sequence within the center region of Zika Virus (H/PF/2013) Envelope (Zika virus (strain H/PF/2013)). The exact sequence is proprietary.

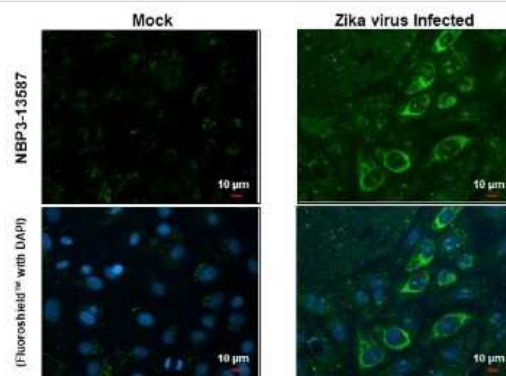
Product Application Details	
Applications	Western Blot, ELISA, Immunocytochemistry/ Immunofluorescence, Immunohistochemistry, Sandwich ELISA
Recommended Dilutions	Western Blot 1:50-1:3000, ELISA 1:1000-1:10000, Immunohistochemistry, Immunocytochemistry/ Immunofluorescence 1:100-1:1000, Sandwich ELISA
Application Notes	IHC, Sandiwch Elisa-Assay dependent

Images

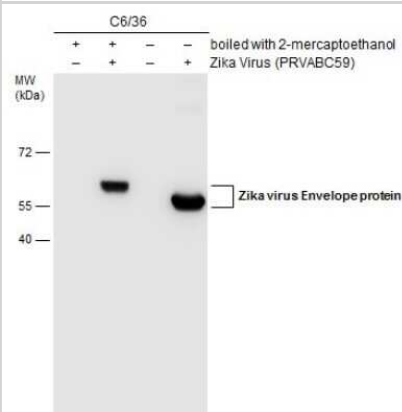
Western Blot: Zika Virus (H/PF/2013) Envelope Antibody (GT363) [NBP3-13587] - Non-infected (-) and infected (+) Vero cell extracts (15 ug, unboiled) were separated by gradient gel, and the membrane was blotted with Zika Virus (H/PF/2013) Envelope antibody [GT363] (NBP3-13587) culture supernatant diluted at 1:50.



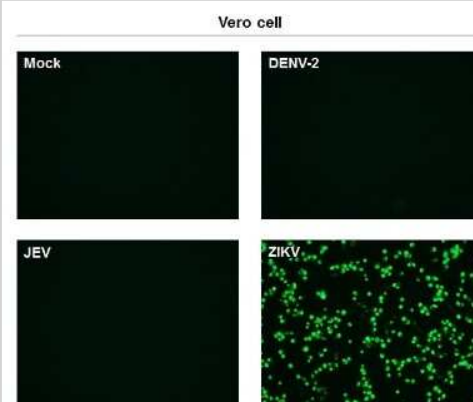
Immunocytochemistry/Immunofluorescence: Zika Virus (H/PF/2013) Envelope Antibody (GT363) [NBP3-13587] - Immunofluorescent analysis of arboviruses infected cells using Zika Virus (H/PF/2013) Envelope antibody [GT363] (NBP3-13587). Sample: Mock and zika virus-infected cells. Green: Zika Virus (H/PF/2013) Envelope antibody [GT363] (NBP3-13587) diluted at 1:100.



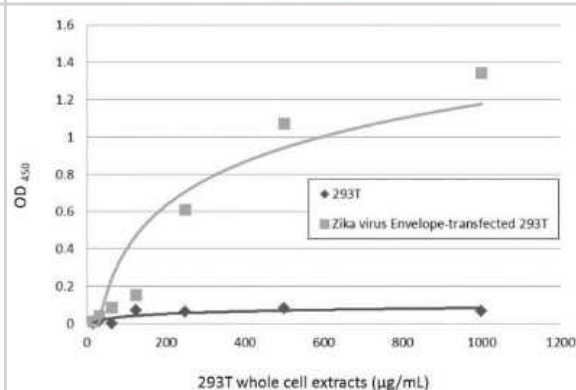
Western Blot: Zika Virus (H/PF/2013) Envelope Antibody (GT363) [NBP3-13587] - Untreated (-) and treated (+) C6/36 cell extracts (15 ug) were separated by gradient gel, and the membrane was blotted with Zika Virus (H/PF/2013) Envelope antibody [GT363] (NBP3-13587) diluted at 1:2000.



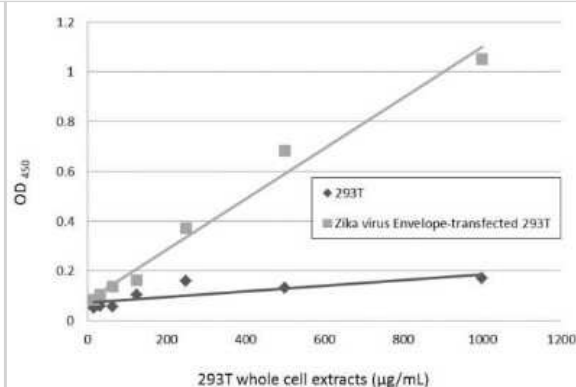
Immunocytochemistry/Immunofluorescence: Zika Virus (H/PF/2013) Envelope Antibody (GT363) [NBP3-13587] - Immunofluorescent analysis of non-infected and infected vero cells using Zika Virus (H/PF/2013) Envelope antibody [GT363] (NBP3-13587). Green: Zika Virus (H/PF/2013) Envelope antibody [GT363] (NBP3-13587) diluted at 1:500.



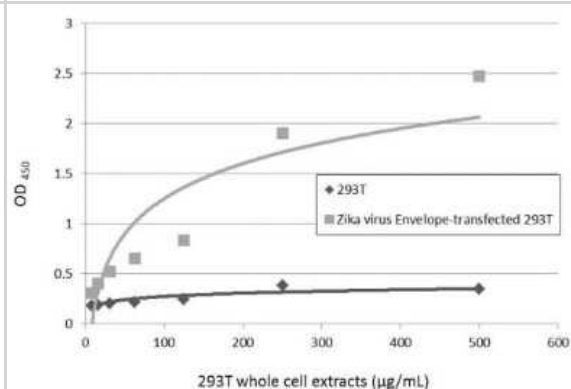
Sandwich ELISA: Zika Virus (H/PF/2013) Envelope Antibody (GT363) [NBP3-13587] - Sandwich ELISA detection of non-transfected and transfected 293T whole cell extracts using NBP3-13587 as capture antibody at concentration of 5 ug/mL and NBP3-13205 as detection antibody at concentration of 1 ug/mL. Rabbit IgG antibody (HRP) (NBP2-19301) was diluted at 1:10000 and used to detect the primary antibody.



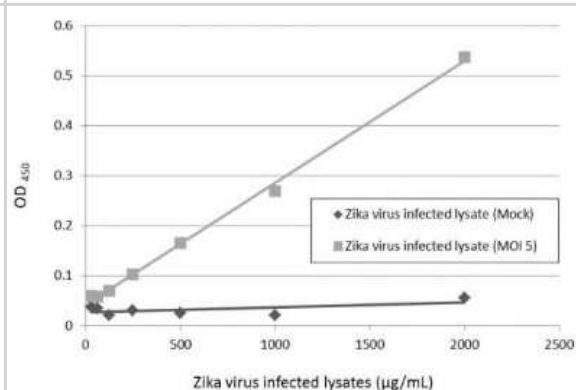
Sandwich ELISA: Zika Virus (H/PF/2013) Envelope Antibody (GT363) [NBP3-13587] - Sandwich ELISA detection of non-transfected and transfected 293T whole cell extracts using NBP3-13206 as capture antibody at concentration of 5 ug/mL and NBP3-13587 as detection antibody at concentration of 1 ug/mL. Mouse IgG antibody (HRP) (NBP2-19382) was diluted at 1:10000 and used to detect the primary antibody.



Sandwich ELISA: Zika Virus (H/PF/2013) Envelope Antibody (GT363) [NBP3-13587] - Sandwich ELISA detection of non-transfected and transfected 293T whole cell extracts using NBP3-13587 as capture antibody at concentration of 5 ug/mL and NBP3-13206 as detection antibody at concentration of 1 ug/mL. Rabbit IgG antibody (HRP) (NBP2-19301) was diluted at 1:10000 and used to detect the primary antibody.



Sandwich ELISA: Zika Virus (H/PF/2013) Envelope Antibody (GT363) [NBP3-13587] - Sandwich ELISA detection of Zika virus-infected lysate using NBP3-13587 as capture antibody at concentration of 5 ug/mL and NBP3-13206 as detection antibody at concentration of 1 ug/mL. Rabbit IgG antibody (HRP) (NBP2-19301) was diluted at 1:10000 and used to detect the primary antibody.





Novus Biologicals USA

10730 E. Briarwood Avenue
Centennial, CO 80112
USA
Phone: 303.730.1950
Toll Free: 1.888.506.6887
Fax: 303.730.1966
nb-customerservice@bio-techne.com

Bio-Techne Canada

21 Canmotor Ave
Toronto, ON M8Z 4E6
Canada
Phone: 905.827.6400
Toll Free: 855.668.8722
Fax: 905.827.6402
canada.inquires@bio-techne.com

Bio-Techne Ltd

19 Barton Lane
Abingdon Science Park
Abingdon, OX14 3NB, United Kingdom
Phone: (44) (0) 1235 529449
Free Phone: 0800 37 34 15
Fax: (44) (0) 1235 533420
info.EMEA@bio-techne.com

General Contact Information

www.novusbio.com
Technical Support: nb-technical@bio-techne.com
Orders: nb-customerservice@bio-techne.com
General: novus@novusbio.com

Products Related to NBP3-13587

HAF007	Goat anti-Mouse IgG Secondary Antibody [HRP]
NB720-B	Rabbit anti-Mouse IgG (H+L) Secondary Antibody [Biotin]
NBP2-27231	Mouse IgG2b Isotype Control (MPC-11)

Limitations

This product is for research use only and is not approved for use in humans or in clinical diagnosis. Primary Antibodies are guaranteed for 1 year from date of receipt.

For more information on our 100% guarantee, please visit www.novusbio.com/guarantee

Earn gift cards/discounts by submitting a review: www.novusbio.com/reviews/submit/NBP3-13587

Earn gift cards/discounts by submitting a publication using this product:
www.novusbio.com/publications

