

# Product Datasheet

## Influenza B nucleoprotein Antibody (GT382) - (B/Taiwan/753/2005) NBP3-13500

Unit Size: 100 ul

Store at 4C short term. Aliquot and store at -20C long term. Avoid freeze-thaw cycles.

[www.novusbio.com](http://www.novusbio.com)



[technical@novusbio.com](mailto:technical@novusbio.com)

Protocols, Publications, Related Products, Reviews, Research Tools and Images at:  
[www.novusbio.com/NBP3-13500](http://www.novusbio.com/NBP3-13500)

Updated 6/14/2023 v.20.1

Earn rewards for product  
reviews and publications.

Submit a publication at [www.novusbio.com/publications](http://www.novusbio.com/publications)

Submit a review at [www.novusbio.com/reviews/destination/NBP3-13500](http://www.novusbio.com/reviews/destination/NBP3-13500)



**NBP3-13500**


Influenza B nucleoprotein Antibody (GT382) - (B/Taiwan/753/2005)

Product Information	
Unit Size	100 ul
Concentration	Concentrations vary lot to lot. See vial label for concentration. If unlisted please contact technical services.
Storage	Store at 4C short term. Aliquot and store at -20C long term. Avoid freeze-thaw cycles.
Clonality	Monoclonal
Clone	GT382
Preservative	No Preservative
Isotype	IgG1
Purity	Protein G purified
Buffer	PBS

Product Description	
Description	Centrifuge briefly prior to opening.
Host	Mouse
Species	Virus
Reactivity Notes	Influenza B virus
Specificity/Sensitivity	Influenza B Nucleoprotein (B/Taiwan/753/2005)
Immunogen	Recombinant protein encompassing a sequence within the N-terminus region of Influenza B Virus Nucleoprotein (B/Taiwan/753/2005). The exact sequence is proprietary.

Product Application Details	
Applications	Western Blot, ELISA, Immunocytochemistry/ Immunofluorescence, Sandwich ELISA
Recommended Dilutions	Western Blot, ELISA, Immunocytochemistry/ Immunofluorescence, Sandwich ELISA

**Images**

Western Blot: Influenza B nucleoprotein Antibody (GT382) [NBP3-13500] 

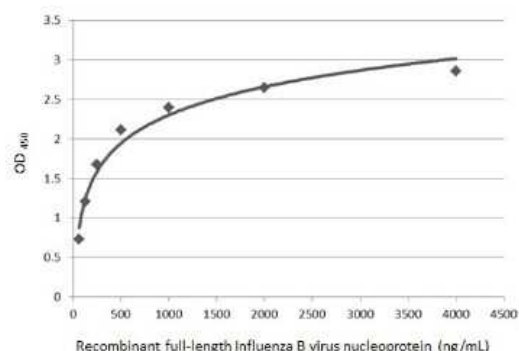
- Influenza B nucleoprotein antibody [GT382] detects Influenza B nucleoprotein by Western blot analysis. A. 10 ug MDCK whole cell lysate/extract B. 10 ug whole cell lysate/extract of Influenza B nucleoprotein (Taiwan 70555) infected MDCK cells 7.5 % SDS-PAGE Influenza B nucleoprotein antibody [GT382] (NBP3-13500) dilution: 1:5000



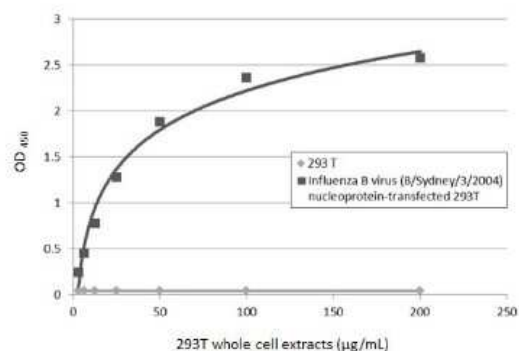
Immunocytochemistry/Immunofluorescence: Influenza B nucleoprotein Antibody (GT382) [NBP3-13500] - Influenza B nucleoprotein antibody [GT382] detects Influenza B nucleoprotein by immunofluorescent analysis. Sample: Influenza B nucleoprotein MDCK cells were fixed in paraformaldehyde. Green: Influenza B nucleoprotein stained by Influenza B nucleoprotein antibody [GT382] (NBP3-13500) diluted at 1:2000. Blue: Hoechst 33342 staining.



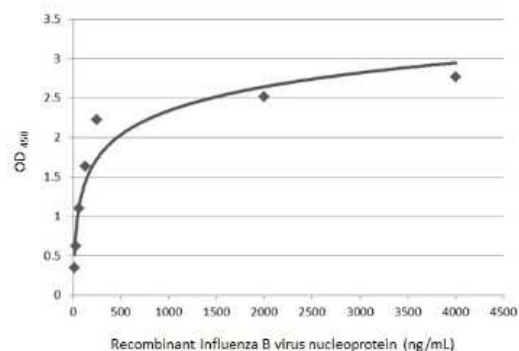
Sandwich ELISA: Influenza B nucleoprotein Antibody (GT382) [NBP3-13500] - Sandwich ELISA detection of recombinant full-length Influenza B nucleoprotein, Flag tag using Influenza B nucleoprotein antibody [GT382] (NBP3-13500) as capture antibody at concentration of 5 ug/mL and Influenza B nucleoprotein antibody (NBP3-12881) as detection antibody at concentration of 1 ug/mL. Rabbit IgG antibody (HRP) (NBP2-19301) was diluted at 1:10000 and used to detect the primary antibody.



Sandwich ELISA: Influenza B nucleoprotein Antibody (GT382) [NBP3-13500] - Sandwich ELISA detection of non-transfected and Influenza B nucleoprotein (B/Sydney/3/2004) transfected 293T whole cell extracts using Influenza B nucleoprotein antibody [GT382] (NBP3-13500) as capture antibody at concentration of 5 ug/mL and Influenza B nucleoprotein antibody as detection antibody at concentration of 1 ug/mL. Rabbit IgG antibody (HRP) (NBP2-19301) was diluted at 1:10000 and used to detect the primary antibody.



Sandwich ELISA: Influenza B nucleoprotein Antibody (GT382) [NBP3-13500] - Sandwich ELISA detection of recombinant full-length Influenza B nucleoprotein, DDDDK tag using Influenza B nucleoprotein antibody [GT382] (NBP3-13500) as capture antibody at concentration of 5 ug/mL and Influenza B nucleoprotein antibody as detection antibody at concentration of 1 ug/mL. Rabbit IgG antibody (HRP) (NBP2-19301) was diluted at 1:10000 and used to detect the primary antibody.





### **Novus Biologicals USA**

10730 E. Briarwood Avenue  
Centennial, CO 80112  
USA  
Phone: 303.730.1950  
Toll Free: 1.888.506.6887  
Fax: 303.730.1966  
nb-customerservice@bio-techne.com

### **Bio-Techne Canada**

21 Canmotor Ave  
Toronto, ON M8Z 4E6  
Canada  
Phone: 905.827.6400  
Toll Free: 855.668.8722  
Fax: 905.827.6402  
canada.inquires@bio-techne.com

### **Bio-Techne Ltd**

19 Barton Lane  
Abingdon Science Park  
Abingdon, OX14 3NB, United Kingdom  
Phone: (44) (0) 1235 529449  
Free Phone: 0800 37 34 15  
Fax: (44) (0) 1235 533420  
info.EMEA@bio-techne.com

### **General Contact Information**

www.novusbio.com  
Technical Support: nb-technical@bio-techne.com  
Orders: nb-customerservice@bio-techne.com  
General: novus@novusbio.com

### **Products Related to NBP3-13500**

HAF007	Goat anti-Mouse IgG Secondary Antibody [HRP]
NB720-B	Rabbit anti-Mouse IgG (H+L) Secondary Antibody [Biotin]
NBP1-97005-0.5mg	Mouse IgG1 Isotype Control (MG1)

### **Limitations**

This product is for research use only and is not approved for use in humans or in clinical diagnosis. Primary Antibodies are guaranteed for 1 year from date of receipt.

For more information on our 100% guarantee, please visit [www.novusbio.com/guarantee](http://www.novusbio.com/guarantee)

Earn gift cards/discounts by submitting a review: [www.novusbio.com/reviews/submit/NBP3-13500](http://www.novusbio.com/reviews/submit/NBP3-13500)

Earn gift cards/discounts by submitting a publication using this product:  
[www.novusbio.com/publications](http://www.novusbio.com/publications)

