

Product Datasheet

Influenza B nucleoprotein Antibody (GT371) - (B/Taiwan/753/2005) NBP3-13499

Unit Size: 100 ul

Store at 4C short term. Aliquot and store at -20C long term. Avoid freeze-thaw cycles.

www.novusbio.com



technical@novusbio.com

Protocols, Publications, Related Products, Reviews, Research Tools and Images at:
www.novusbio.com/NBP3-13499

Updated 6/14/2023 v.20.1

Earn rewards for product
reviews and publications.

Submit a publication at www.novusbio.com/publications

Submit a review at www.novusbio.com/reviews/destination/NBP3-13499



NBP3-13499

Influenza B nucleoprotein Antibody (GT371) - (B/Taiwan/753/2005)

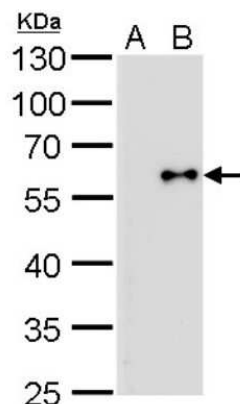
| Product Information | |
|---------------------|--|
| Unit Size | 100 ul |
| Concentration | Concentrations vary lot to lot. See vial label for concentration. If unlisted please contact technical services. |
| Storage | Store at 4C short term. Aliquot and store at -20C long term. Avoid freeze-thaw cycles. |
| Clonality | Monoclonal |
| Clone | GT371 |
| Preservative | No Preservative |
| Isotype | IgG2a |
| Purity | Protein G purified |
| Buffer | PBS |

| Product Description | |
|-------------------------|---|
| Description | Centrifuge briefly prior to opening. |
| Host | Mouse |
| Species | Virus |
| Reactivity Notes | Influenza B virus |
| Specificity/Sensitivity | Influenza B Nucleoprotein (B/Taiwan/753/2005) |
| Immunogen | Recombinant protein encompassing a sequence within the N-terminus region of Influenza B Virus Nucleoprotein (B/Taiwan/753/2005). The exact sequence is proprietary. |

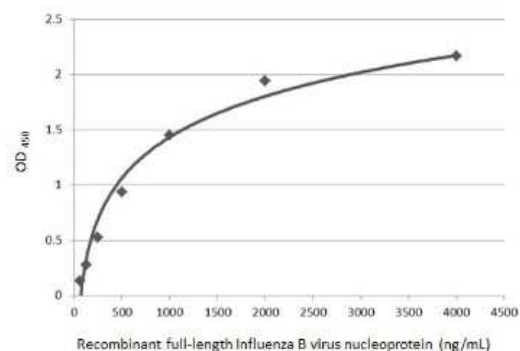
| Product Application Details | |
|-----------------------------|---|
| Applications | Western Blot, ELISA, Immunocytochemistry/ Immunofluorescence, Sandwich ELISA |
| Recommended Dilutions | Western Blot, ELISA, Immunocytochemistry/ Immunofluorescence 1:100-1:2000, Sandwich ELISA |

Images

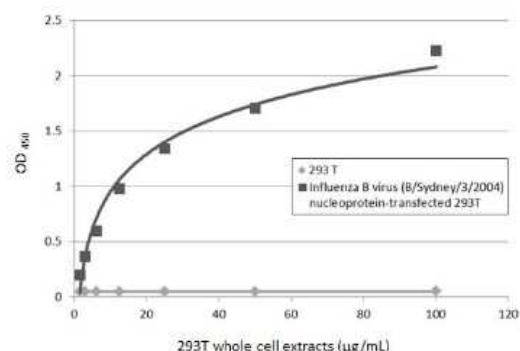
Western Blot: Influenza B nucleoprotein Antibody (GT371) [NBP3-13499] - Influenza B nucleoprotein antibody [GT371] detects Influenza B nucleoprotein by Western blot analysis. A. 1 ug MDCK whole cell lysate/extract B. 1 ug whole cell lysate/extract of Influenza B(Taiwan 70555) infected MDCK cells 7.5 % SDS-PAGE Influenza B nucleoprotein antibody [GT371] (NBP3-13499) dilution: 1:5000



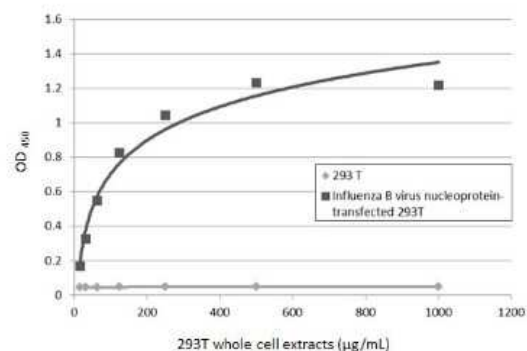
Sandwich ELISA: Influenza B nucleoprotein Antibody (GT371) [NBP3-13499] - Sandwich ELISA detection of recombinant full-length Influenza B nucleoprotein, Flag tag using Influenza B nucleoprotein antibody [GT371] (NBP3-13499) as capture antibody at concentration of 5 ug/mL and Influenza B nucleoprotein antibody (NBP3-12881) as detection antibody at concentration of 1 ug/mL. Rabbit IgG antibody (HRP) (NBP2-19301) was diluted at 1:10000 and used to detect the primary antibody.



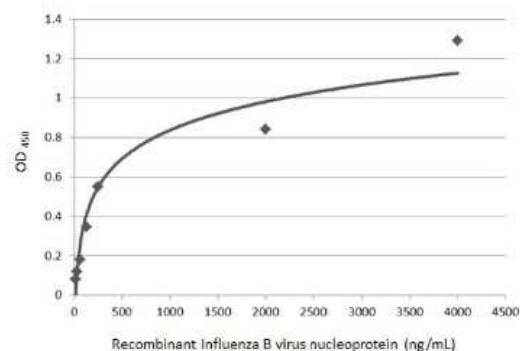
Sandwich ELISA: Influenza B nucleoprotein Antibody (GT371) [NBP3-13499] - Sandwich ELISA detection of non-transfected and Influenza B nucleoprotein (B/Sydney/3/2004) transfected 293T whole cell extracts using Influenza B nucleoprotein antibody [GT371] (NBP3-13499) as capture antibody at concentration of 5 ug/mL and Influenza B nucleoprotein antibody (NBP3-12881) as detection antibody at concentration of 1 ug/mL. Rabbit IgG antibody (HRP) (NBP2-19301) was diluted at 1:10000 and used to detect the primary antibody.



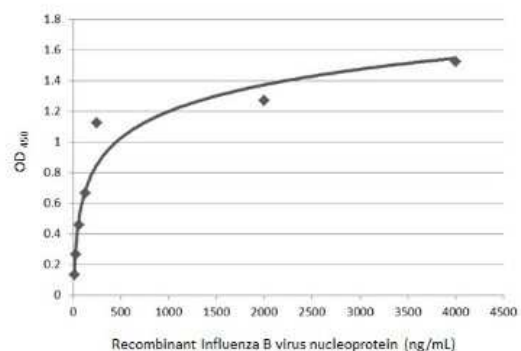
Sandwich ELISA: Influenza B nucleoprotein Antibody (GT371) [NBP3-13499] - Sandwich ELISA detection of non-transfected and Influenza B nucleoprotein transfected 293T whole cell extracts using Influenza B nucleoprotein antibody [GT371] (NBP3-13499) as capture antibody at concentration of 5 ug/mL and Influenza B nucleoprotein antibody as detection antibody at concentration of 1 ug/mL. Rabbit IgG antibody (HRP) (NBP2-19301) was diluted at 1:10000 and used to detect the primary antibody.



Sandwich ELISA: Influenza B nucleoprotein Antibody (GT371) [NBP3-13499] - Sandwich ELISA detection of recombinant full-length Influenza B nucleoprotein, DDDDK tag using Influenza B nucleoprotein antibody as capture antibody at concentration of 5 ug/mL and Influenza B nucleoprotein antibody [GT371] (NBP3-13499) as detection antibody at concentration of 1 ug/mL. Mouse IgG antibody (HRP) (NBP2-19382) was diluted at 1:10000 and used to detect the primary antibody.



Sandwich ELISA: Influenza B nucleoprotein Antibody (GT371) [NBP3-13499] - Sandwich ELISA detection of recombinant full-length Influenza B nucleoprotein, DDDDK tag using Influenza B nucleoprotein antibody [GT371] (NBP3-13499) as capture antibody at concentration of 5 ug/mL and Influenza B nucleoprotein antibody as detection antibody at concentration of 1 ug/mL. Rabbit IgG antibody (HRP) (NBP2-19301) was diluted at 1:10000 and used to detect the primary antibody.





Novus Biologicals USA

10730 E. Briarwood Avenue
Centennial, CO 80112
USA
Phone: 303.730.1950
Toll Free: 1.888.506.6887
Fax: 303.730.1966
nb-customerservice@bio-techne.com

Bio-Techne Canada

21 Canmotor Ave
Toronto, ON M8Z 4E6
Canada
Phone: 905.827.6400
Toll Free: 855.668.8722
Fax: 905.827.6402
canada.inquires@bio-techne.com

Bio-Techne Ltd

19 Barton Lane
Abingdon Science Park
Abingdon, OX14 3NB, United Kingdom
Phone: (44) (0) 1235 529449
Free Phone: 0800 37 34 15
Fax: (44) (0) 1235 533420
info.EMEA@bio-techne.com

General Contact Information

www.novusbio.com
Technical Support: nb-technical@bio-techne.com
Orders: nb-customerservice@bio-techne.com
General: novus@novusbio.com

Products Related to NBP3-13499

| | |
|------------|---|
| HAF007 | Goat anti-Mouse IgG Secondary Antibody [HRP] |
| NB720-B | Rabbit anti-Mouse IgG (H+L) Secondary Antibody [Biotin] |
| NBP1-96778 | Mouse IgG2a Isotype Control (M2A) |

Limitations

This product is for research use only and is not approved for use in humans or in clinical diagnosis. Primary Antibodies are guaranteed for 1 year from date of receipt.

For more information on our 100% guarantee, please visit www.novusbio.com/guarantee

Earn gift cards/discounts by submitting a review: www.novusbio.com/reviews/submit/NBP3-13499

Earn gift cards/discounts by submitting a publication using this product:
www.novusbio.com/publications

