

Product Datasheet

EGFR [p Tyr1045] Antibody

NBP3-13229

Unit Size: 100 ul

Store at 4C short term. Aliquot and store at -20C long term. Avoid freeze-thaw cycles.

www.novusbio.com



technical@novusbio.com

Protocols, Publications, Related Products, Reviews, Research Tools and Images at:
www.novusbio.com/NBP3-13229

Updated 7/18/2024 v.20.1

Earn rewards for product
reviews and publications.

Submit a publication at www.novusbio.com/publications

Submit a review at www.novusbio.com/reviews/destination/NBP3-13229



NBP3-13229

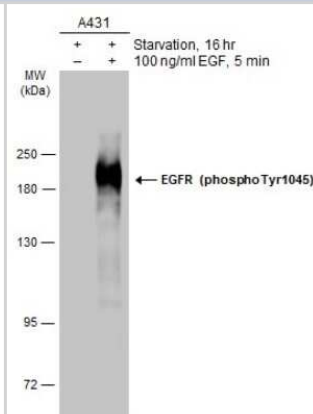
EGFR [p Tyr1045] Antibody

Product Information	
Unit Size	100 ul
Concentration	Concentrations vary lot to lot. See vial label for concentration. If unlisted please contact technical services.
Storage	Store at 4C short term. Aliquot and store at -20C long term. Avoid freeze-thaw cycles.
Clonality	Polyclonal
Preservative	0.025% Proclin 300
Isotype	IgG
Purity	Antigen Affinity-purified
Buffer	PBS (pH 7), 20% Glycerol, 1% BSA
Product Description	
Description	Centrifuge briefly prior to opening.
Host	Rabbit
Gene ID	1956
Gene Symbol	EGFR
Species	Human
Immunogen	Carrier-protein conjugated synthetic peptide surrounding phospho Tyr1045 of human EGFR. The exact sequence is proprietary.
Product Application Details	
Applications	Western Blot, Immunohistochemistry-Paraffin, Immunocytochemistry/Immunofluorescence, Immunohistochemistry
Recommended Dilutions	Western Blot, Immunohistochemistry, Immunocytochemistry/Immunofluorescence, Immunohistochemistry-Paraffin

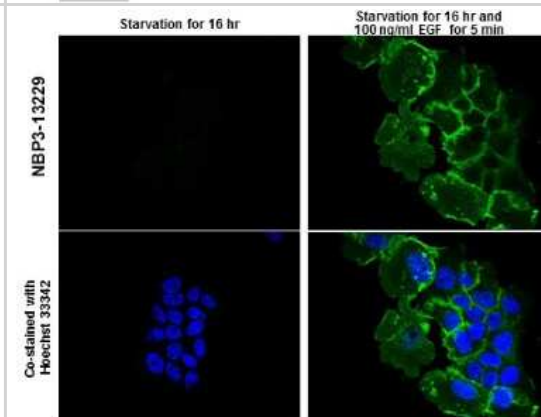


Images

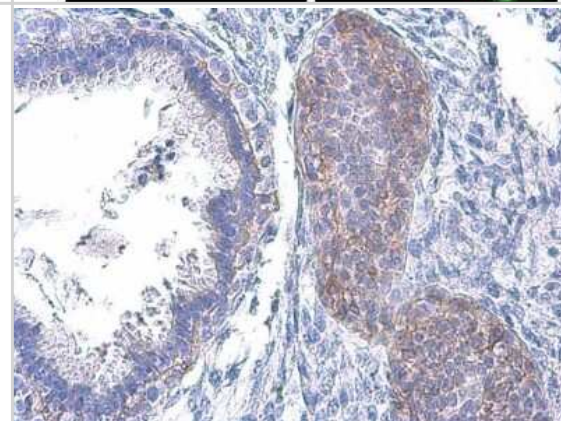
Western Blot: EGFR [p Tyr1045] Antibody [NBP3-13229] - Untreated (-) and treated (+) A431 whole cell extract (30 ug) were separated by 7.5% SDS-PAGE, and the membrane was blotted with EGFR (phospho Tyr1045) antibody (NBP3-13229) diluted at 1:2000. The HRP-conjugated anti-rabbit IgG antibody (NBP2-19301) was used to detect the primary antibody.



Immunocytochemistry/Immunofluorescence: EGFR [p Tyr1045] Antibody [NBP3-13229] - EGFR (phospho Tyr1045) antibody detects EGFR (phospho Tyr1045) protein at cell membrane by immunofluorescent analysis. Sample: A431 cells were fixed in 4% paraformaldehyde at RT for 15 min. Green: EGFR (phospho Tyr1045) protein stained by EGFR (phospho Tyr1045) antibody (NBP3-13229) diluted at 1:500. Blue: Hoechst 33342 staining.



Immunohistochemistry-Paraffin: EGFR [p Tyr1045] Antibody [NBP3-13229] - EGFR (phospho Tyr1045) antibody detects EGFR (phospho Tyr1045) protein at cell membrane in human breast carcinoma by immunohistochemical analysis. Sample: Paraffin-embedded human breast carcinoma. EGFR (phospho Tyr1045) antibody (NBP3-13229) diluted at 1:500. Antigen Retrieval: Citrate buffer, pH 6.0, 15 min





Novus Biologicals USA

10730 E. Briarwood Avenue
Centennial, CO 80112
USA
Phone: 303.730.1950
Toll Free: 1.888.506.6887
Fax: 303.730.1966
nb-customerservice@bio-techne.com

Bio-Techne Canada

21 Canmotor Ave
Toronto, ON M8Z 4E6
Canada
Phone: 905.827.6400
Toll Free: 855.668.8722
Fax: 905.827.6402
canada.inquires@bio-techne.com

Bio-Techne Ltd

19 Barton Lane
Abingdon Science Park
Abingdon, OX14 3NB, United Kingdom
Phone: (44) (0) 1235 529449
Free Phone: 0800 37 34 15
Fax: (44) (0) 1235 533420
info.EMEA@bio-techne.com

General Contact Information

www.novusbio.com
Technical Support: nb-technical@bio-techne.com
Orders: nb-customerservice@bio-techne.com
General: novus@novusbio.com

Products Related to NBP3-13229

HAF008	Goat anti-Rabbit IgG Secondary Antibody [HRP]
NB7160	Goat anti-Rabbit IgG (H+L) Secondary Antibody [HRP]
NBP2-24891	Rabbit IgG Isotype Control
NBP2-52952PEP	EGFR Recombinant Protein Antigen

Limitations

This product is for research use only and is not approved for use in humans or in clinical diagnosis. Primary Antibodies are guaranteed for 1 year from date of receipt.

For more information on our 100% guarantee, please visit www.novusbio.com/guarantee

Earn gift cards/discounts by submitting a review: www.novusbio.com/reviews/submit/NBP3-13229

Earn gift cards/discounts by submitting a publication using this product:
www.novusbio.com/publications

