

# Product Datasheet

## GAT-1/SLC6A1 Antibody - BSA Free NBP3-13166

Unit Size: 100 ul

Store at 4C short term. Aliquot and store at -20C long term. Avoid freeze-thaw cycles.

[www.novusbio.com](http://www.novusbio.com)



[technical@novusbio.com](mailto:technical@novusbio.com)

Protocols, Publications, Related Products, Reviews, Research Tools and Images at:  
[www.novusbio.com/NBP3-13166](http://www.novusbio.com/NBP3-13166)

Updated 3/3/2025 v.20.1

Earn rewards for product  
reviews and publications.

Submit a publication at [www.novusbio.com/publications](http://www.novusbio.com/publications)

Submit a review at [www.novusbio.com/reviews/destination/NBP3-13166](http://www.novusbio.com/reviews/destination/NBP3-13166)



**NBP3-13166**

GAT-1/SLC6A1 Antibody - BSA Free

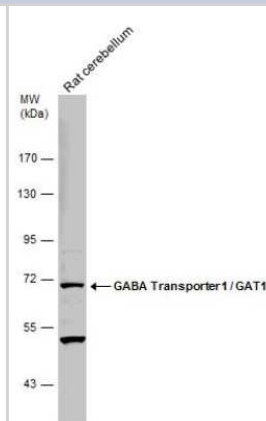
Product Information	
Unit Size	100 ul
Concentration	Concentrations vary lot to lot. See vial label for concentration. If unlisted please contact technical services.
Storage	Store at 4C short term. Aliquot and store at -20C long term. Avoid freeze-thaw cycles.
Clonality	Polyclonal
Preservative	0.025% Proclin 300
Isotype	IgG
Purity	Antigen Affinity-purified
Buffer	PBS (pH 7), 20% Glycerol
Target Molecular Weight	67 kDa

Product Description	
Description	Centrifuge briefly prior to opening.
Host	Rabbit
Gene ID	6529
Gene Symbol	SLC6A1
Species	Mouse, Rat
Reactivity Notes	Xenopus laevis (85%)
Immunogen	Recombinant protein encompassing a sequence within the center region of mouse GAT-1/SLC6A1. The exact sequence is proprietary.

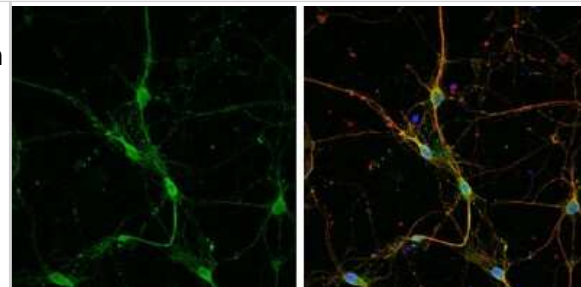
Product Application Details	
Applications	Western Blot, Immunohistochemistry-Paraffin, Immunocytochemistry/Immunofluorescence, Immunohistochemistry, Immunohistochemistry-Frozen
Recommended Dilutions	Western Blot 1:500-1:3000, Immunohistochemistry 1:100-1:1000, Immunocytochemistry/ Immunofluorescence 1:100-1:1000, Immunohistochemistry-Paraffin 1:100-1:1000, Immunohistochemistry-Frozen 1:100-1:1000

**Images**

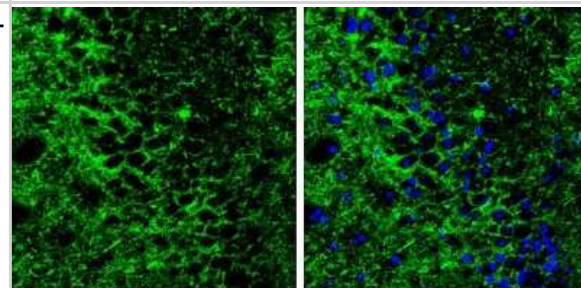
Western Blot: GAT-1/SLC6A1 Antibody [NBP3-13166] - Rat tissue extract (50 ug) was separated by 7.5% SDS-PAGE, and the membrane was blotted with GAT-1/SLC6A1 antibody (NBP3-13166) diluted at 1:500.



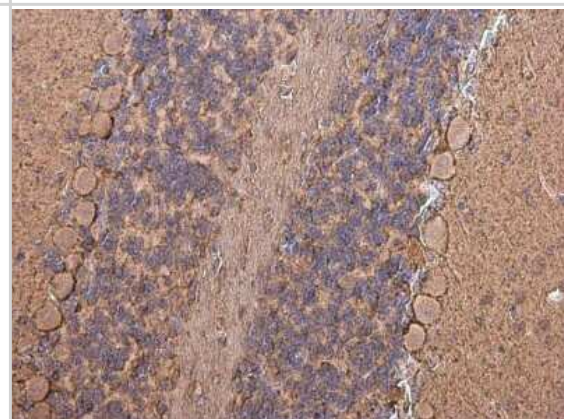
**Immunocytochemistry/Immunofluorescence: GAT-1/SLC6A1 Antibody [NBP3-13166]** - GAT-1/SLC6A1 antibody detects GAT-1/SLC6A1 protein by immunofluorescent analysis. Sample: DIV9 rat E18 primary cortical neuron cells were fixed in 4% paraformaldehyde at RT for 15 min. Green: GAT-1/SLC6A1 stained by GAT-1/SLC6A1 antibody (NBP3-13166) diluted at 1:500. Red: beta Tubulin 3/ Tuj1, stained by beta Tubulin 3/ Tuj1 antibody [GT1338] (NBP3-13505) diluted at 1:500. Blue: Fluoroshield with DAPI.



**Immunohistochemistry-Frozen: GAT-1/SLC6A1 Antibody [NBP3-13166]** - GAT-1/SLC6A1 antibody detects GAT-1/SLC6A1 protein by immunohistochemical analysis. Samples: Frozen Sectioned adult mouse hippocampus. Green: GAT-1/SLC6A1 protein stained by GAT-1/SLC6A1 antibody (NBP3-13166) diluted at 1:250. Blue: Fluoroshield with DAPI. Antigen Retrieval: Citrate buffer, pH 6.0, 10 min



**Immunohistochemistry-Paraffin: GAT-1/SLC6A1 Antibody [NBP3-13166]** - GAT-1/SLC6A1 antibody detects GAT-1/SLC6A1 protein at cell membrane and cytoplasm in mouse brain by immunohistochemical analysis. Sample: Paraffin-embedded mouse brain. GAT-1/SLC6A1 antibody (NBP3-13166) diluted at 1:500. Antigen Retrieval: Citrate buffer, pH 6.0, 15 min



**Immunohistochemistry-Paraffin: GAT-1/SLC6A1 Antibody [NBP3-13166]** - GAT-1/SLC6A1 antibody detects GAT-1/SLC6A1 protein at cell membrane and cytoplasm in rat brain by immunohistochemical analysis. Sample: Paraffin-embedded rat brain. GAT-1/SLC6A1 antibody (NBP3-13166) diluted at 1:500. Antigen Retrieval: Citrate buffer, pH 6.0, 15 min





### **Novus Biologicals USA**

10730 E. Briarwood Avenue  
Centennial, CO 80112  
USA  
Phone: 303.730.1950  
Toll Free: 1.888.506.6887  
Fax: 303.730.1966  
nb-customerservice@bio-techne.com

### **Bio-Techne Canada**

21 Canmotor Ave  
Toronto, ON M8Z 4E6  
Canada  
Phone: 905.827.6400  
Toll Free: 855.668.8722  
Fax: 905.827.6402  
canada.inquires@bio-techne.com

### **Bio-Techne Ltd**

19 Barton Lane  
Abingdon Science Park  
Abingdon, OX14 3NB, United Kingdom  
Phone: (44) (0) 1235 529449  
Free Phone: 0800 37 34 15  
Fax: (44) (0) 1235 533420  
info.EMEA@bio-techne.com

### **General Contact Information**

[www.novusbio.com](http://www.novusbio.com)  
Technical Support: nb-technical@bio-techne.com  
Orders: nb-customerservice@bio-techne.com  
General: novus@novusbio.com

### **Products Related to NBP3-13166**

HAF008	Goat anti-Rabbit IgG Secondary Antibody [HRP]
NB7160	Goat anti-Rabbit IgG (H+L) Secondary Antibody [HRP]
NBP2-24891	Rabbit IgG Isotype Control
NBP1-89802PEP	GAT-1/SLC6A1 Recombinant Protein Antigen

### **Limitations**

This product is for research use only and is not approved for use in humans or in clinical diagnosis. Primary Antibodies are guaranteed for 1 year from date of receipt.

For more information on our 100% guarantee, please visit [www.novusbio.com/guarantee](http://www.novusbio.com/guarantee)

Earn gift cards/discounts by submitting a review: [www.novusbio.com/reviews/submit/NBP3-13166](http://www.novusbio.com/reviews/submit/NBP3-13166)

Earn gift cards/discounts by submitting a publication using this product:  
[www.novusbio.com/publications](http://www.novusbio.com/publications)

