

Product Datasheet

Influenza B nucleoprotein Antibody - (B/Taiwan/753/2005) - BSA Free NBP3-12881

Unit Size: 100 ul

Store at 4C short term. Aliquot and store at -20C long term. Avoid freeze-thaw cycles.

www.novusbio.com



technical@novusbio.com

Protocols, Publications, Related Products, Reviews, Research Tools and Images at:
www.novusbio.com/NBP3-12881

Updated 3/3/2025 v.20.1

Earn rewards for product
reviews and publications.

Submit a publication at www.novusbio.com/publications

Submit a review at www.novusbio.com/reviews/destination/NBP3-12881



NBP3-12881

Influenza B nucleoprotein Antibody - (B/Taiwan/753/2005) - BSA Free

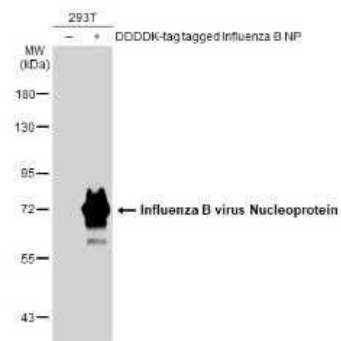
Product Information	
Unit Size	100 ul
Concentration	Concentrations vary lot to lot. See vial label for concentration. If unlisted please contact technical services.
Storage	Store at 4C short term. Aliquot and store at -20C long term. Avoid freeze-thaw cycles.
Clonality	Polyclonal
Preservative	0.025% Proclin 300
Isotype	IgG
Purity	Antigen Affinity-purified
Buffer	PBS (pH 7), 20% Glycerol

Product Description	
Description	Centrifuge briefly prior to opening.
Host	Rabbit
Species	Virus
Reactivity Notes	Influenza B virus
Specificity/Sensitivity	Influenza B Nucleoprotein (B/Taiwan/753/2005)
Immunogen	Recombinant protein encompassing a sequence within the N-terminus region of Influenza B nucleoprotein (B/Taiwan/753/2005). The exact sequence is proprietary.

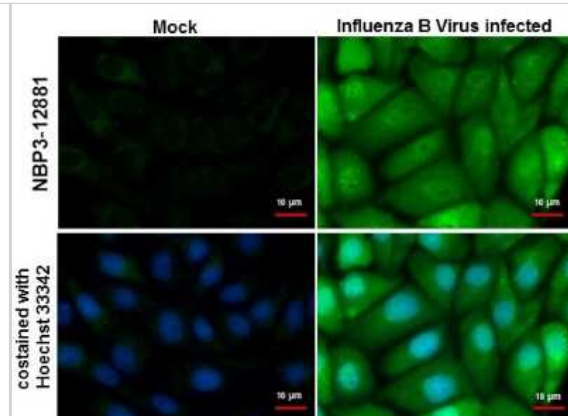
Product Application Details	
Applications	Western Blot, ELISA, Immunocytochemistry/ Immunofluorescence, Sandwich ELISA
Recommended Dilutions	Western Blot, ELISA, Immunocytochemistry/ Immunofluorescence, Sandwich ELISA

Images

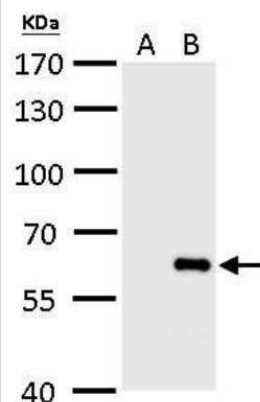
Western Blot: Influenza B nucleoprotein Antibody [NBP3-12881] - Non-transfected (-) and transfected (+) 293T whole cell extracts (30 ug) were separated by 7.5% SDS-PAGE, and the membrane was blotted with Influenza B nucleoprotein antibody (NBP3-12881) diluted at 1:5000. The HRP-conjugated anti-rabbit IgG antibody (NBP2-19301) was used to detect the primary antibody.



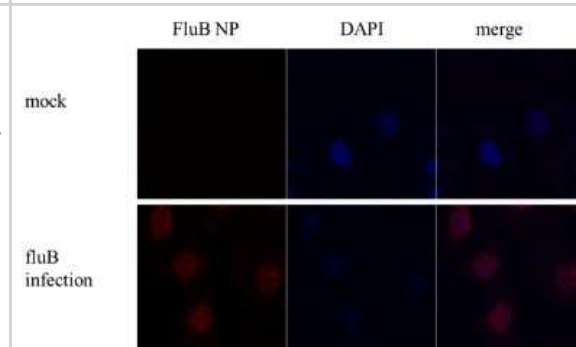
Immunocytochemistry/Immunofluorescence: Influenza B nucleoprotein Antibody [NBP3-12881] - Influenza B nucleoprotein antibody detects Influenza B nucleoproteinprotein by immunofluorescent analysis. Sample: Influenza B infected MDCK cells were fixed in paraformaldehyde. Green: Influenza B nucleoprotein stained by Influenza B nucleoprotein antibody (NBP3-12881) diluted at 1:2000. Blue: Hoechst 33342 staining.



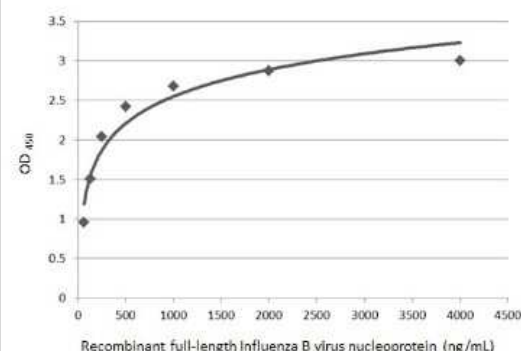
Western Blot: Influenza B nucleoprotein Antibody [NBP3-12881] - Influenza B nucleoprotein antibody detects Influenza B nucleoproteinprotein by Western blot analysis. A. 5ul non-infected medium B. 5ul Influenza B (Taiwan B70555) infected medium 7.5 % SDS-PAGE Influenza B nucleoprotein antibody (NBP3-12881) dilution: 1:10000



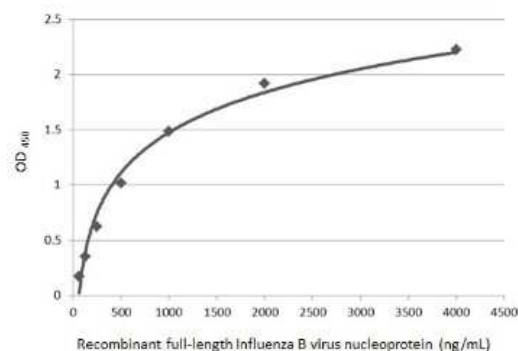
Immunocytochemistry/Immunofluorescence: Influenza B nucleoprotein Antibody [NBP3-12881] - Influenza B nucleoprotein antibody detects Influenza B Virus nucleoprotein by immunofluorescent analysis. Sample: MDCK cells infected with Influenza B (Taiwan B70555). Green: Influenza B nucleoprotein stained by Influenza B nucleoprotein antibody (NBP3-12881) diluted at 1:500. Blue: Hoechst 33342 staining.



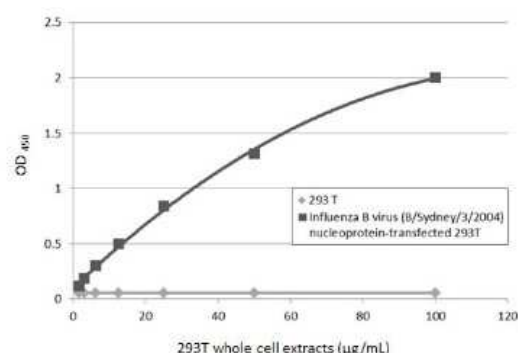
Sandwich ELISA: Influenza B nucleoprotein Antibody [NBP3-12881] - Sandwich ELISA detection of recombinant full-length Influenza B nucleoprotein, Flag tag using Influenza B nucleoprotein antibody [GT382] (NBP3-13500) as capture antibody at concentration of 5 ug/mL and Influenza B nucleoprotein antibody (NBP3-12881) as detection antibody at concentration of 1 ug/mL. Rabbit IgG antibody (HRP) (NBP2-19301) was diluted at 1:10000 and used to detect the primary antibody.



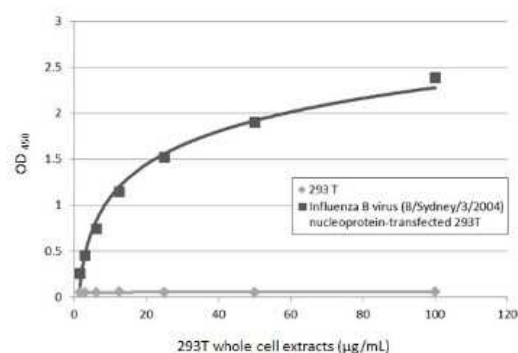
Sandwich ELISA: Influenza B nucleoprotein Antibody [NBP3-12881] - Sandwich ELISA detection of recombinant full-length Influenza B nucleoprotein, Flag tag using Influenza B nucleoprotein antibody [GT371] (NBP3-13499) as capture antibody at concentration of 5 ug/mL and Influenza B nucleoprotein antibody (NBP3-12881) as detection antibody at concentration of 1 ug/mL. Rabbit IgG antibody (HRP) (NBP2-19301) was diluted at 1:10000 and used to detect the primary antibody.



Sandwich ELISA: Influenza B nucleoprotein Antibody [NBP3-12881] - Sandwich ELISA detection of non-transfected and Influenza B nucleoprotein (B/Sydney/3/2004) transfected 293T whole cell extracts using Influenza B nucleoprotein antibody [GT382] (NBP3-13500) as capture antibody at concentration of 5 ug/mL and Influenza B nucleoprotein antibody (NBP3-12881) as detection antibody at concentration of 1 ug/mL. Rabbit IgG antibody (HRP) (NBP2-19301) was diluted at 1:10000 and used to detect the primary antibody.



Sandwich ELISA: Influenza B nucleoprotein Antibody [NBP3-12881] - Sandwich ELISA detection of non-transfected and Influenza B nucleoprotein (B/Sydney/3/2004) nucleoprotein transfected 293T whole cell extracts using Influenza B nucleoprotein antibody [GT371] (NBP3-13499) as capture antibody at concentration of 5 ug/mL and Influenza B nucleoprotein antibody (NBP3-12881) as detection antibody at concentration of 1 ug/mL. Rabbit IgG antibody (HRP) (NBP2-19301) was diluted at 1:10000 and used to detect the primary antibody.





Novus Biologicals USA

10730 E. Briarwood Avenue
Centennial, CO 80112
USA
Phone: 303.730.1950
Toll Free: 1.888.506.6887
Fax: 303.730.1966
nb-customerservice@bio-techne.com

Bio-Techne Canada

21 Canmotor Ave
Toronto, ON M8Z 4E6
Canada
Phone: 905.827.6400
Toll Free: 855.668.8722
Fax: 905.827.6402
canada.inquires@bio-techne.com

Bio-Techne Ltd

19 Barton Lane
Abingdon Science Park
Abingdon, OX14 3NB, United Kingdom
Phone: (44) (0) 1235 529449
Free Phone: 0800 37 34 15
Fax: (44) (0) 1235 533420
info.EMEA@bio-techne.com

General Contact Information

www.novusbio.com
Technical Support: nb-technical@bio-
techne.com
Orders: nb-customerservice@bio-techne.com
General: novus@novusbio.com

Products Related to NBP3-12881

HAF008	Goat anti-Rabbit IgG Secondary Antibody [HRP]
NB7160	Goat anti-Rabbit IgG (H+L) Secondary Antibody [HRP]
NBP2-24891	Rabbit IgG Isotype Control

Limitations

This product is for research use only and is not approved for use in humans or in clinical diagnosis. Primary Antibodies are guaranteed for 1 year from date of receipt.

For more information on our 100% guarantee, please visit www.novusbio.com/guarantee

Earn gift cards/discounts by submitting a review: www.novusbio.com/reviews/submit/NBP3-12881

Earn gift cards/discounts by submitting a publication using this product:
www.novusbio.com/publications

