

# Product Datasheet

## PD-1 Antibody (F25F4) - VHH NBP3-12830

Unit Size: 0.1 mg

Store at -20C. Avoid freeze-thaw cycles.

[www.novusbio.com](http://www.novusbio.com)



[technical@novusbio.com](mailto:technical@novusbio.com)

Protocols, Publications, Related Products, Reviews, Research Tools and Images at:  
[www.novusbio.com/NBP3-12830](http://www.novusbio.com/NBP3-12830)

Updated 2/6/2022 v.20.1

Earn rewards for product  
reviews and publications.

Submit a publication at [www.novusbio.com/publications](http://www.novusbio.com/publications)

Submit a review at [www.novusbio.com/reviews/destination/NBP3-12830](http://www.novusbio.com/reviews/destination/NBP3-12830)



**NBP3-12830**

PD-1 Antibody (F25F4) - VHH

Product Information	
Unit Size	0.1 mg
Concentration	1 mg/ml
Storage	Store at -20C. Avoid freeze-thaw cycles.
Clonality	Monoclonal
Clone	F25F4
Preservative	No Preservative
Purity	Affinity purified
Buffer	PBS

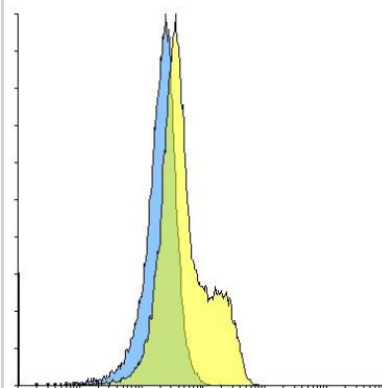
Product Description	
Description	Recombinant Monoclonal Antibody - Llamabody(TM). Llama VHH domain containing a Myc-tag for detection and His-tag (MW ~ 15kDa)
Host	Llama
Gene ID	5133
Gene Symbol	PDCD1
Species	Human
Immunogen	PD-1 antibody was raised against a recombinant protein corresponding to amino acids 25 - 167 of human PD-1.

Product Application Details	
Applications	ELISA, Flow Cytometry
Recommended Dilutions	Flow Cytometry, ELISA

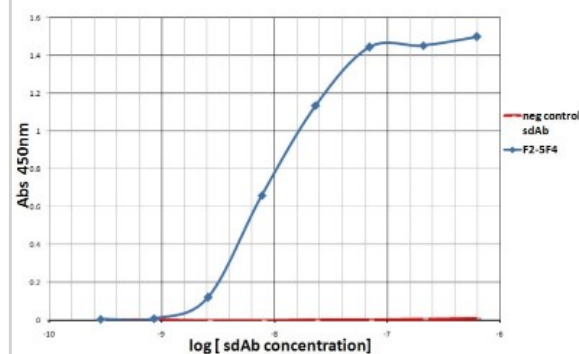


## Images

Flow Cytometry: PD-1 Antibody (F25F4) - VHH [NBP3-12830] - Flow cytometry analysis of PD-1 transfected 293 cells using PD-1 [F2-5F4] antibody at 10 ug/ml. Blue: untransfected cells, Yellow: PD-1 transfected cells.



ELISA: PD-1 Antibody (F25F4) - VHH [NBP3-12830] - Titration ELISA of PD-1.





### **Novus Biologicals USA**

10730 E. Briarwood Avenue  
Centennial, CO 80112  
USA  
Phone: 303.730.1950  
Toll Free: 1.888.506.6887  
Fax: 303.730.1966  
novus@novusbio.com

### **Bio-Techne Canada**

21 Canmotor Ave  
Toronto, ON M8Z 4E6  
Canada  
Phone: 905.827.6400  
Toll Free: 855.668.8722  
Fax: 905.827.6402  
canada.inquires@bio-techne.com

### **Bio-Techne Ltd**

19 Barton Lane  
Abingdon Science Park  
Abingdon, OX14 3NB, United Kingdom  
Phone: (44) (0) 1235 529449  
Free Phone: 0800 37 34 15  
Fax: (44) (0) 1235 533420  
info.EMEA@bio-techne.com

### **General Contact Information**

www.novusbio.com  
Technical Support: technical@novusbio.com  
Orders: orders@novusbio.com  
General: novus@novusbio.com

### **Products Related to NBP3-12830**

---

AF011-500	Goat anti-Llama IgG Secondary Antibody [Unconjugated]
NB7242	Goat anti-Llama IgG (H+L) Secondary Antibody [HRP]
NBP1-77276PEP	PD-1 Antibody Blocking Peptide
210-TA-005	TNF-alpha [Unconjugated]

---

### **Limitations**

This product is for research use only and is not approved for use in humans or in clinical diagnosis. Primary Antibodies are guaranteed for 1 year from date of receipt.

For more information on our 100% guarantee, please visit [www.novusbio.com/guarantee](http://www.novusbio.com/guarantee)

Earn gift cards/discounts by submitting a review: [www.novusbio.com/reviews/submit/NBP3-12830](http://www.novusbio.com/reviews/submit/NBP3-12830)

Earn gift cards/discounts by submitting a publication using this product:  
[www.novusbio.com/publications](http://www.novusbio.com/publications)

