

# Product Datasheet

## PD-L1 Antibody (F2G2) - VHH - Azide and BSA Free NBP3-12826

Unit Size: 0.1 mg

Store at -20C. Avoid freeze-thaw cycles.

[www.novusbio.com](http://www.novusbio.com)



[technical@novusbio.com](mailto:technical@novusbio.com)

Protocols, Publications, Related Products, Reviews, Research Tools and Images at:  
[www.novusbio.com/NBP3-12826](http://www.novusbio.com/NBP3-12826)

Updated 7/31/2025 v.20.1

Earn rewards for product  
reviews and publications.

Submit a publication at [www.novusbio.com/publications](http://www.novusbio.com/publications)

Submit a review at [www.novusbio.com/reviews/destination/NBP3-12826](http://www.novusbio.com/reviews/destination/NBP3-12826)



**NBP3-12826**

PD-L1 Antibody (F2G2) - VHH - Azide and BSA Free

Product Information	
Unit Size	0.1 mg
Concentration	1 mg/ml
Storage	Store at -20C. Avoid freeze-thaw cycles.
Clonality	Monoclonal
Clone	F2G2
Preservative	No Preservative
Purity	Affinity purified
Buffer	PBS

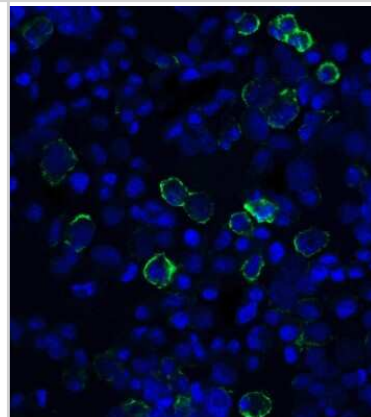
Product Description	
Description	Recombinant Monoclonal Antibody - Llamabody(TM). Llama VHH domain containing a Myc-tag for detection and His-tag (MW ~ 15kDa)
Host	Llama
Gene ID	29126
Gene Symbol	CD274
Species	Human
Immunogen	PD-L1 antibody was raised against a recombinant protein corresponding to amino acids 19 - 239 of human PD-L1. .

Product Application Details	
Applications	ELISA, Immunocytochemistry/ Immunofluorescence
Recommended Dilutions	ELISA, Immunocytochemistry/ Immunofluorescence 10-20 ug/mL

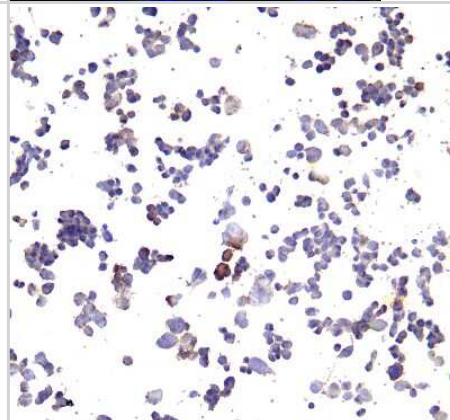


## Images

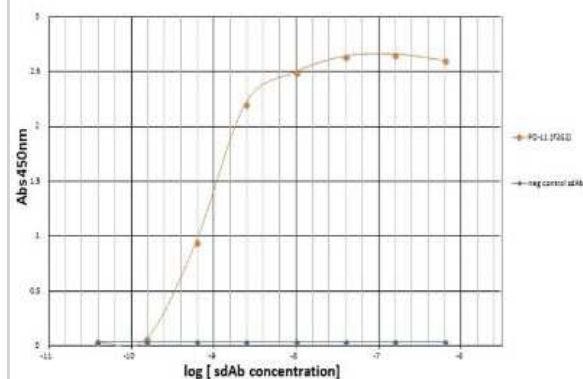
Immunocytochemistry/Immunofluorescence: PD-L1 Antibody (F2G2) - VHH [NBP3-12826] - Immunofluorescence of PD-L1 in transfected 293 cells with PD-L1 antibody at 10 ug/ml. Green: PD-L1 Antibody [F2G2] Blue: DAPI staining



Immunocytochemistry/Immunofluorescence: PD-L1 Antibody (F2G2) - VHH [NBP3-12826] - Immunocytochemistry of PD-L1 in transfected 293 cells with PD-L1 antibody at 10 ug/ml.



ELISA: PD-L1 Antibody (F2G2) - VHH [NBP3-12826] - Titration ELISA of PD-L1.





### **Novus Biologicals USA**

10730 E. Briarwood Avenue  
Centennial, CO 80112  
USA  
Phone: 303.730.1950  
Toll Free: 1.888.506.6887  
Fax: 303.730.1966  
nb-customerservice@bio-techne.com

### **Bio-Techne Canada**

21 Canmotor Ave  
Toronto, ON M8Z 4E6  
Canada  
Phone: 905.827.6400  
Toll Free: 855.668.8722  
Fax: 905.827.6402  
canada.inquires@bio-techne.com

### **Bio-Techne Ltd**

19 Barton Lane  
Abingdon Science Park  
Abingdon, OX14 3NB, United Kingdom  
Phone: (44) (0) 1235 529449  
Free Phone: 0800 37 34 15  
Fax: (44) (0) 1235 533420  
info.EMEA@bio-techne.com

### **General Contact Information**

[www.novusbio.com](http://www.novusbio.com)  
Technical Support: nb-technical@bio-techne.com  
Orders: nb-customerservice@bio-techne.com  
General: novus@novusbio.com

### **Products Related to NBP3-12826**

---

AF011-500	Goat anti-Llama IgG Secondary Antibody [Unconjugated]
NB7240	Goat anti- Alpaca, Llama IgG (H+L) Secondary Antibody
NBP1-76769PEP-0.1mg	PD-L1 Antibody Blocking Peptide
210-TA-005	TNF-alpha [Unconjugated]

---

### **Limitations**

This product is for research use only and is not approved for use in humans or in clinical diagnosis. Primary Antibodies are guaranteed for 1 year from date of receipt.

For more information on our 100% guarantee, please visit [www.novusbio.com/guarantee](http://www.novusbio.com/guarantee)

Earn gift cards/discounts by submitting a review: [www.novusbio.com/reviews/submit/NBP3-12826](http://www.novusbio.com/reviews/submit/NBP3-12826)

Earn gift cards/discounts by submitting a publication using this product:  
[www.novusbio.com/publications](http://www.novusbio.com/publications)

