

# Product Datasheet

## Myelin expression factor 2 Antibody NBP3-12682-100ul

Unit Size: 100 ul

Store at 4C short term. Aliquot and store at -20C long term. Avoid freeze-thaw cycles.

[www.novusbio.com](http://www.novusbio.com)



[technical@novusbio.com](mailto:technical@novusbio.com)

Protocols, Publications, Related Products, Reviews, Research Tools and Images at:  
[www.novusbio.com/NBP3-12682](http://www.novusbio.com/NBP3-12682)

Updated 9/5/2023 v.20.1

Earn rewards for product  
reviews and publications.

Submit a publication at [www.novusbio.com/publications](http://www.novusbio.com/publications)

Submit a review at [www.novusbio.com/reviews/destination/NBP3-12682](http://www.novusbio.com/reviews/destination/NBP3-12682)



**NBP3-12682-100ul****Myelin expression factor 2 Antibody****Product Information**

<b>Unit Size</b>	100 ul
<b>Concentration</b>	Please see the vial label for concentration. If unlisted please contact technical services.
<b>Storage</b>	Store at 4C short term. Aliquot and store at -20C long term. Avoid freeze-thaw cycles.
<b>Clonality</b>	Polyclonal
<b>Preservative</b>	0.03% Proclin 300
<b>Isotype</b>	IgG
<b>Purity</b>	Antigen and protein A Affinity-purified
<b>Buffer</b>	PBS, pH7.0

**Product Description**

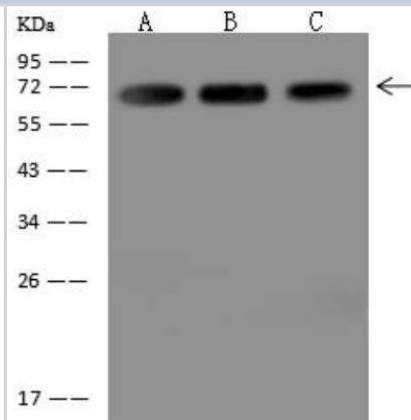
<b>Description</b>	This antibody can be stored at 2-8C for one month without detectable loss of activity. Antibody products are stable for twelve months from date of receipt when stored at -20C to -80C. Avoid repeated freeze-thaw cycles.  Protein A & Antigen Affinity purified
<b>Host</b>	Rabbit
<b>Gene Symbol</b>	MyEF2
<b>Species</b>	Human
<b>Immunogen</b>	Produced in rabbits immunized with E. coli-derived Human Myelin expression factor 2 fragment

**Product Application Details**

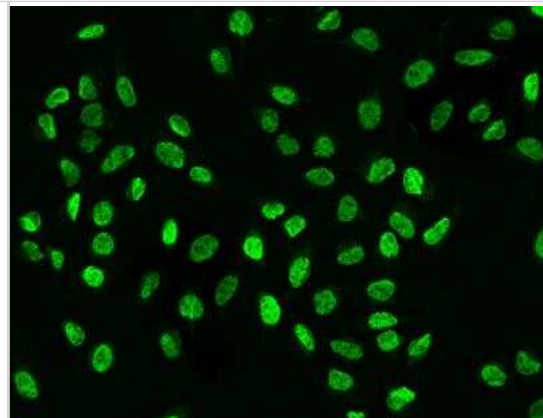
<b>Applications</b>	Western Blot, Immunocytochemistry/ Immunofluorescence, Immunohistochemistry-Paraffin, Immunoprecipitation
<b>Recommended Dilutions</b>	Western Blot 1:500-1:2000, Immunocytochemistry/ Immunofluorescence 1:100-1:500, Immunoprecipitation 1-5uL/mg of uLysate, Immunohistochemistry-Paraffin 1:1000-1:20000

**Images**

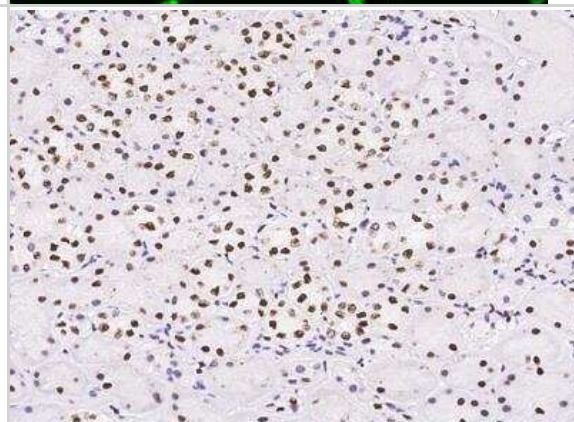
Western Blot: Myelin expression factor 2 Antibody [NBP3-12682] - Lane A: SH-SY5Y Whole Cell Lysate Lane B: Jurkat Whole Cell Lysate Lane C: MCF7 Whole Cell Lysate Lysates/proteins at 30 ug per lane. Secondary Goat Anti-Rabbit IgG (H+L)/HRP at 1/10000 dilution. Developed using the ECL technique. Performed under reducing conditions. Predicted band size:64 kDa Observed band size:70 kDa



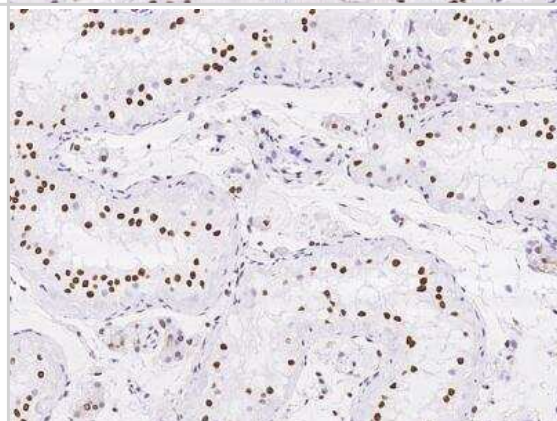
Immunocytochemistry/Immunofluorescence: Myelin expression factor 2 Antibody [NBP3-12682] - Staining of MYEF2 in U2OS cells. Cells were fixed with 4% PFA, permeabilized with 0.3% Triton X-100 in PBS, blocked with 10% serum, and incubated with rabbit anti-Human MYEF2 polyclonal antibody (dilution ratio 1:200) at 4? overnight. Then cells were stained with the Alexa Fluor®488-conjugated Goat Anti-rabbit IgG secondary antibody (green). Positive staining was localized to Nucleus.



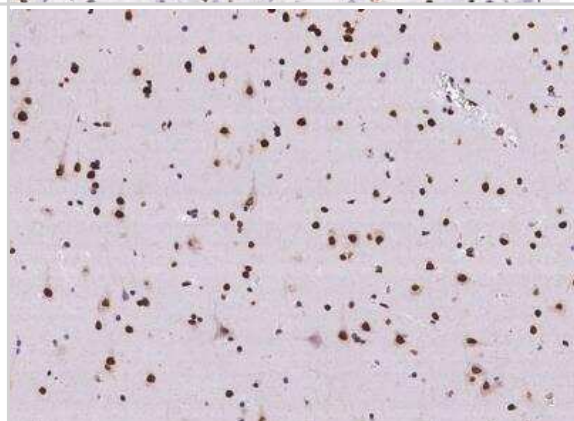
Immunohistochemistry-Paraffin: Myelin expression factor 2 Antibody [NBP3-12682] - Staining of human MYEF2 in human kidney with rabbit polyclonal antibody at 1:10000 dilution.



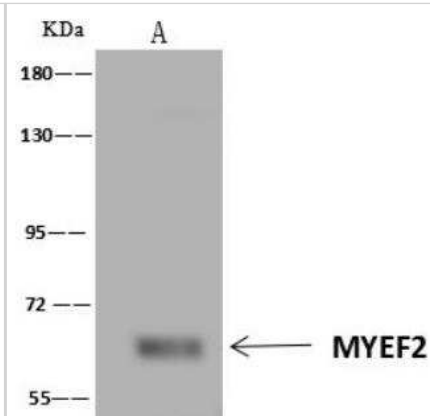
Immunohistochemistry-Paraffin: Myelin expression factor 2 Antibody [NBP3-12682] - Staining of human MYEF2 in human testis with rabbit polyclonal antibody at 1:10000 dilution.



Immunohistochemistry-Paraffin: Myelin expression factor 2 Antibody [NBP3-12682] - Staining of human MYEF2 in human brain with rabbit polyclonal antibody at 1:10000 dilution.



Immunoprecipitation: Myelin expression factor 2 Antibody [NBP3-12682]  
- Lane A: 0.5 mg SH-SY5Y Whole Cell Lysate 4  $\mu$ L anti-MYEF2 rabbit polyclonal antibody and 60  $\mu$ g of Immunomagnetic beads Protein A/G.  
Primary antibody: Anti-MYEF2 rabbit polyclonal antibody, at 1:100 dilution  
Secondary antibody: Clean-Blot IP Detection Reagent (HRP) at 1:1000 dilution  
Developed using the ECL technique. Performed under reducing conditions. Predicted band size: 64 kDa  
Observed band size: 64 kDa





### **Novus Biologicals USA**

10730 E. Briarwood Avenue  
Centennial, CO 80112  
USA  
Phone: 303.730.1950  
Toll Free: 1.888.506.6887  
Fax: 303.730.1966  
nb-customerservice@bio-techne.com

### **Bio-Techne Canada**

21 Canmotor Ave  
Toronto, ON M8Z 4E6  
Canada  
Phone: 905.827.6400  
Toll Free: 855.668.8722  
Fax: 905.827.6402  
canada.inquires@bio-techne.com

### **Bio-Techne Ltd**

19 Barton Lane  
Abingdon Science Park  
Abingdon, OX14 3NB, United Kingdom  
Phone: (44) (0) 1235 529449  
Free Phone: 0800 37 34 15  
Fax: (44) (0) 1235 533420  
info.EMEA@bio-techne.com

### **General Contact Information**

www.novusbio.com  
Technical Support: nb-technical@bio-techne.com  
Orders: nb-customerservice@bio-techne.com  
General: novus@novusbio.com

### **Products Related to NBP3-12682-100ul**

HAF008	Goat anti-Rabbit IgG Secondary Antibody [HRP]
NB7160	Goat anti-Rabbit IgG (H+L) Secondary Antibody [HRP]
NBP2-24891	Rabbit IgG Isotype Control
H00050804-P01-10ug	Recombinant Human Myelin expression factor 2 GST (N-Term) Protein

### **Limitations**

This product is for research use only and is not approved for use in humans or in clinical diagnosis. Primary Antibodies are guaranteed for 1 year from date of receipt.

For more information on our 100% guarantee, please visit [www.novusbio.com/guarantee](http://www.novusbio.com/guarantee)

Earn gift cards/discounts by submitting a review: [www.novusbio.com/reviews/submit/NBP3-12682](http://www.novusbio.com/reviews/submit/NBP3-12682)

Earn gift cards/discounts by submitting a publication using this product:  
[www.novusbio.com/publications](http://www.novusbio.com/publications)

