

# Product Datasheet

## Lactase Antibody NBP3-12238

Unit Size: 100 ug

Store at 4C short term. Store at -20C long term. Avoid freeze-thaw cycles.

[www.novusbio.com](http://www.novusbio.com)



[technical@novusbio.com](mailto:technical@novusbio.com)

Protocols, Publications, Related Products, Reviews, Research Tools and Images at:  
[www.novusbio.com/NBP3-12238](http://www.novusbio.com/NBP3-12238)

Updated 6/30/2022 v.20.1

Earn rewards for product  
reviews and publications.

Submit a publication at [www.novusbio.com/publications](http://www.novusbio.com/publications)

Submit a review at [www.novusbio.com/reviews/destination/NBP3-12238](http://www.novusbio.com/reviews/destination/NBP3-12238)



**NBP3-12238****Lactase Antibody**

<b>Product Information</b>	
<b>Unit Size</b>	100 ug
<b>Concentration</b>	Please see the vial label for concentration. If unlisted please contact technical services.
<b>Storage</b>	Store at 4C short term. Store at -20C long term. Avoid freeze-thaw cycles.
<b>Clonality</b>	Polyclonal
<b>Preservative</b>	0.02% Sodium Azide
<b>Purity</b>	Affinity purified
<b>Buffer</b>	Contains Tris, HCl/glycine buffer (pH 7.4-7.8), 30% glycerol, 0.5% BSA, along with cryo-protective agents, and HEPES (exact storage and stabilization buffer information is proprietary).

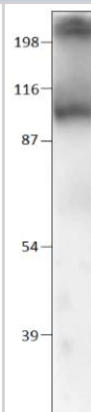
<b>Product Description</b>	
<b>Host</b>	Rabbit
<b>Gene ID</b>	3938
<b>Gene Symbol</b>	LCT
<b>Species</b>	Human, Mouse, Rat
<b>Immunogen</b>	Synthetic peptide taken within amino acid region 1080-1130 on rat Lactase protein.

<b>Product Application Details</b>	
<b>Applications</b>	Western Blot, ELISA, Immunocytochemistry/Immunofluorescence, Immunohistochemistry, Immunohistochemistry-Paraffin, Immunoprecipitation
<b>Recommended Dilutions</b>	Western Blot 1:500, ELISA 1:10000, Immunohistochemistry 1:50, Immunocytochemistry/Immunofluorescence 1:50, Immunoprecipitation 1:200, Immunohistochemistry-Paraffin

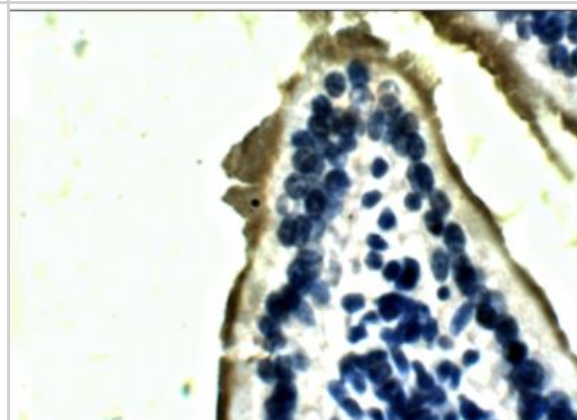


## Images

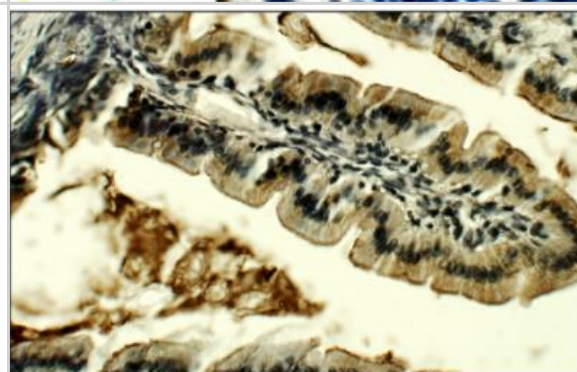
Western Blot: Lactase Antibody [NBP3-12238] - WB. 1:500 antibody dilution in Diluobuffer. Apparent MW is 240 kDa



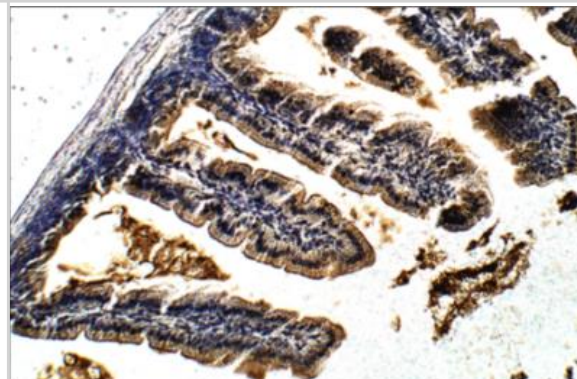
Immunohistochemistry-Paraffin: Lactase Antibody [NBP3-12238] - Mouse Intestine-Lactase. 1:100 in IHC blocking buffer. DAB (brown) substrate. Hematoxylin QS (blue) counter stain. Lactase expression noted on the enterocyte brush boarder membranes. Photographed on Leica DM4000 at 100X magnification.



Immunohistochemistry-Paraffin: Lactase Antibody [NBP3-12238] - Mouse Intestine-Lactase. 1:50 dilution in IHC blocking buffer. DAB (brown) substrate. Hematoxylin QS (blue) counterstrain.



Immunohistochemistry-Paraffin: Lactase Antibody [NBP3-12238] - Mouse Inteatine-Lactase. 1:100 in IHC blocking buffer. DAB (brown) substrate. Hematoxylin QS (blue) counter strain. Lactase expression noted on the enterocyte brush boarder membranes. Photographed on Leica DM4000 at 20X magnification.





### **Novus Biologicals USA**

10730 E. Briarwood Avenue  
Centennial, CO 80112  
USA  
Phone: 303.730.1950  
Toll Free: 1.888.506.6887  
Fax: 303.730.1966  
novus@novusbio.com

### **Bio-Techne Canada**

21 Canmotor Ave  
Toronto, ON M8Z 4E6  
Canada  
Phone: 905.827.6400  
Toll Free: 855.668.8722  
Fax: 905.827.6402  
canada.inquires@bio-techne.com

### **Bio-Techne Ltd**

19 Barton Lane  
Abingdon Science Park  
Abingdon, OX14 3NB, United Kingdom  
Phone: (44) (0) 1235 529449  
Free Phone: 0800 37 34 15  
Fax: (44) (0) 1235 533420  
info.EMEA@bio-techne.com

### **General Contact Information**

www.novusbio.com  
Technical Support: technical@novusbio.com  
Orders: orders@novusbio.com  
General: novus@novusbio.com

### **Products Related to NBP3-12238**

HAF008	Goat anti-Rabbit IgG Secondary Antibody [HRP (Horseradish Peroxidase)]
NB7160	Goat anti-Rabbit IgG (H+L) Secondary Antibody [HRP]
H00003938-Q01-10ug	Recombinant Human Lactase GST (N-Term) Protein
291-G1-200	IGF-I/IGF-1 [Unconjugated]

### **Limitations**

This product is for research use only and is not approved for use in humans or in clinical diagnosis. Primary Antibodies are guaranteed for 1 year from date of receipt.

For more information on our 100% guarantee, please visit [www.novusbio.com/guarantee](http://www.novusbio.com/guarantee)

Earn gift cards/discounts by submitting a review: [www.novusbio.com/reviews/submit/NBP3-12238](http://www.novusbio.com/reviews/submit/NBP3-12238)

Earn gift cards/discounts by submitting a publication using this product:  
[www.novusbio.com/publications](http://www.novusbio.com/publications)

