

Product Datasheet

Fc epsilon RI Antibody (IB10) - Chimeric - Azide and BSA Free **NBP3-12050-0.2mg**

Unit Size: 0.2 mg

Store at 4C for up to 3 months. For longer storage, aliquot and store at -20C.

www.novusbio.com



technical@novusbio.com

Protocols, Publications, Related Products, Reviews, Research Tools and Images at:
www.novusbio.com/NBP3-12050

Updated 10/19/2023 v.20.1

Earn rewards for product reviews and publications.

Submit a publication at www.novusbio.com/publications

Submit a review at www.novusbio.com/reviews/destination/NBP3-12050



NBP3-12050-0.2mg

Fc epsilon RI Antibody (IB10) - Chimeric - Azide and BSA Free

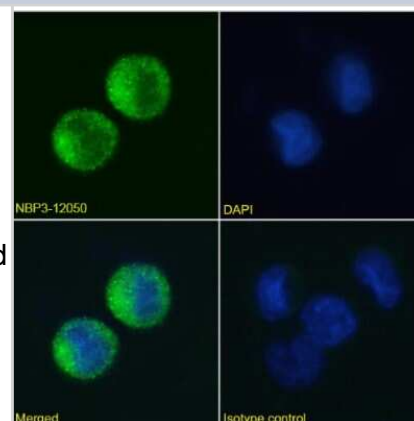
Product Information	
Unit Size	0.2 mg
Concentration	1 mg/ml
Storage	Store at 4C for up to 3 months. For longer storage, aliquot and store at -20C.
Clonality	Monoclonal
Clone	IB10
Preservative	0.02% Proclin 300
Isotype	IgG Kappa
Purity	Protein A purified
Buffer	PBS

Product Description	
Host	Rabbit
Gene ID	2205
Gene Symbol	FCER1A
Species	Human
Specificity/Sensitivity	This antibody binds to human Fc epsilon receptor and competes with IgE binding.
Immunogen	Recombinant human protein, N-terminus.

Product Application Details	
Applications	Flow Cytometry, Immunocytochemistry/ Immunofluorescence, Block/Neutralize
Recommended Dilutions	Flow Cytometry, Immunocytochemistry/ Immunofluorescence, Block/Neutralize
Application Notes	IB10 competes with IgE for binding to human FCER1A; consequently, its binding to mast cells and basophils is decreased when IgE concentration is high, but it does block IgE binding to these cells. IB10 and IE7 do not crossblock each other's binding. This chimeric rabbit antibody was made using the variable domain sequences of the original Mouse IgG1 format, for improved compatibility with existing reagents, assays and techniques.

Images

Immunocytochemistry/Immunofluorescence: Fc epsilon RI Antibody (IB10) - Chimeric [NBP3-12050] - Immunofluorescence analysis of paraformaldehyde fixed U937 cells immobilized on Shi-fix(TM) cover-slips and stained with the chimeric rabbit IgG version of IB10 (NBP3-12050) at 10 ug/ml followed by Alexa Fluor(R) 488 secondary antibody (2 ug/ml), showing diffuse membrane staining. The nuclear stain is DAPI (blue). Panels show from left-right, top-bottom NBP3-12050, DAPI, merged channels and an isotype control. The isotype control was stained with anti-Fluorescein antibody (NBP2-52638) followed by Alexa Fluor(R) 488 secondary antibody.





Novus Biologicals USA

10730 E. Briarwood Avenue
Centennial, CO 80112
USA
Phone: 303.730.1950
Toll Free: 1.888.506.6887
Fax: 303.730.1966
nb-customerservice@bio-techne.com

Bio-Techne Canada

21 Canmotor Ave
Toronto, ON M8Z 4E6
Canada
Phone: 905.827.6400
Toll Free: 855.668.8722
Fax: 905.827.6402
canada.inquires@bio-techne.com

Bio-Techne Ltd

19 Barton Lane
Abingdon Science Park
Abingdon, OX14 3NB, United Kingdom
Phone: (44) (0) 1235 529449
Free Phone: 0800 37 34 15
Fax: (44) (0) 1235 533420
info.EMEA@bio-techne.com

General Contact Information

www.novusbio.com
Technical Support: nb-technical@bio-
techne.com
Orders: nb-customerservice@bio-techne.com
General: novus@novusbio.com

Products Related to NBP3-12050-0.2mg

HAF008	Goat anti-Rabbit IgG Secondary Antibody [HRP]
NB7160	Goat anti-Rabbit IgG (H+L) Secondary Antibody [HRP]
NBP2-23043	Recombinant Human Fc epsilon RI His Protein
210-TA-005	TNF-alpha [Unconjugated]

Limitations

This product is for research use only and is not approved for use in humans or in clinical diagnosis. Primary Antibodies are guaranteed for 1 year from date of receipt.

For more information on our 100% guarantee, please visit www.novusbio.com/guarantee

Earn gift cards/discounts by submitting a review: www.novusbio.com/reviews/submit/NBP3-12050

Earn gift cards/discounts by submitting a publication using this product:
www.novusbio.com/publications

