

# Product Datasheet

## OneStep TUNEL Apoptosis Kit [FITC]

### NBP3-11957-100Assays

Unit Size: 100 Assays

Store at -20C.

[www.novusbio.com](http://www.novusbio.com)



[technical@novusbio.com](mailto:technical@novusbio.com)

Protocols, Publications, Related Products, Reviews, Research Tools and Images at:  
[www.novusbio.com/NBP3-11957](http://www.novusbio.com/NBP3-11957)

Updated 6/30/2023 v.20.1

Earn rewards for product  
reviews and publications.

Submit a publication at [www.novusbio.com/publications](http://www.novusbio.com/publications)

Submit a review at [www.novusbio.com/reviews/destination/NBP3-11957](http://www.novusbio.com/reviews/destination/NBP3-11957)



**NBP3-11957-100Assays****OneStep TUNEL Apoptosis Kit [FITC]**

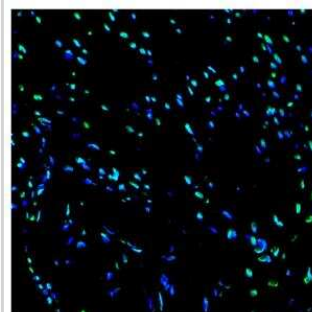
<b>Product Information</b>	
<b>Unit Size</b>	100 Assays
<b>Concentration</b>	Concentration is not relevant for this product. Please see the protocols for proper use of this product.
<b>Storage</b>	Store at -20C.
<b>Conjugate</b>	FITC

<b>Product Description</b>	
<b>Description</b>	This OneStep TUNEL Apoptosis Kit is a highly sensitive, fast and simple method for cell apoptosis detection. The test results can be directly observed through a fluorescence microscope. This kit is suitable for in situ apoptosis detection of tissue samples (Paraffin embedding, freezing and ultrathin section) and cells (Cell smears, cell climbing smears) in situ apoptotic detection.
<b>Kit Components</b>	DAPI (25X), TdT Equilibration Buffer, TdT Enzyme, Proteinase K (100X), Label Solution, DNase I (2 U/uL), DNase I Buffer (10X)

<b>Product Application Details</b>	
<b>Applications</b>	Flow Cytometry, Fluorescence Imaging
<b>Recommended Dilutions</b>	Flow Cytometry, Fluorescence Imaging
<b>Application Notes</b>	Label Solution and DAPI (25X) should be stored in the dark.

**Images**

Fluorescence Imaging: OneStep TUNEL Apoptosis Kit [FITC] [NBP3-11957]



Paraffin embedded rat heart was treated with DNase I to fragment the DNA. DNA strand breaks showed intense fluorescent staining in DNase I treated sample (green). The cells were counterstained with DAPI (blue).



### **Novus Biologicals USA**

10730 E. Briarwood Avenue  
Centennial, CO 80112  
USA  
Phone: 303.730.1950  
Toll Free: 1.888.506.6887  
Fax: 303.730.1966  
nb-customerservice@bio-techne.com

### **Bio-Techne Canada**

21 Canmotor Ave  
Toronto, ON M8Z 4E6  
Canada  
Phone: 905.827.6400  
Toll Free: 855.668.8722  
Fax: 905.827.6402  
canada.inquires@bio-techne.com

### **Bio-Techne Ltd**

19 Barton Lane  
Abingdon Science Park  
Abingdon, OX14 3NB, United Kingdom  
Phone: (44) (0) 1235 529449  
Free Phone: 0800 37 34 15  
Fax: (44) (0) 1235 533420  
info.EMEA@bio-techne.com

### **General Contact Information**

www.novusbio.com  
Technical Support: nb-technical@bio-  
techne.com  
Orders: nb-customerservice@bio-techne.com  
General: novus@novusbio.com

### **Limitations**

This product is for research use only and is not approved for use in humans or in clinical diagnosis. Kits are guaranteed for 6 months from date of receipt.

For more information on our 100% guarantee, please visit [www.novusbio.com/guarantee](http://www.novusbio.com/guarantee)

Earn gift cards/discounts by submitting a review: [www.novusbio.com/reviews/submit/NBP3-11957](http://www.novusbio.com/reviews/submit/NBP3-11957)

Earn gift cards/discounts by submitting a publication using this product:  
[www.novusbio.com/publications](http://www.novusbio.com/publications)

