

Product Datasheet

Rab1A Antibody (4G10) - BSA Free NBP3-11043-100ug

Unit Size: 100 ug

Store at -20C.

www.novusbio.com



technical@novusbio.com

Protocols, Publications, Related Products, Reviews, Research Tools and Images at:
www.novusbio.com/NBP3-11043

Updated 8/21/2025 v.20.1

Earn rewards for product
reviews and publications.

Submit a publication at www.novusbio.com/publications

Submit a review at www.novusbio.com/reviews/destination/NBP3-11043



NBP3-11043-100ug

Rab1A Antibody (4G10) - BSA Free

Product Information	
Unit Size	100 ug
Concentration	1 mg/ml
Storage	Store at -20C.
Clonality	Monoclonal
Clone	4G10
Preservative	0.09% Sodium Azide
Isotype	IgG1
Purity	Protein G purified
Buffer	PBS (pH 7.4), 50% Glycerol

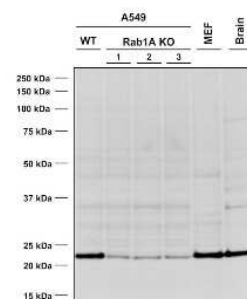
Product Description	
Host	Mouse
Gene ID	5861
Gene Symbol	RAB1A
Species	Human, Mouse
Specificity/Sensitivity	Detects ~23 kDa. Cross-reacts with RAB1B and RAB1C.
Immunogen	Full length recombinant Rab1A protein (NP_004152.1)

Product Application Details	
Applications	Western Blot, Immunoprecipitation, Knockout Validated
Recommended Dilutions	Western Blot 1:1000, Immunoprecipitation, Knockout Validated

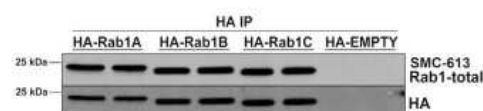


Images

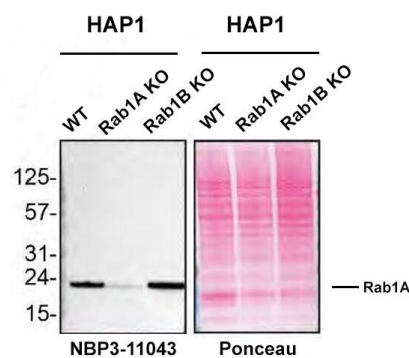
Western Blot: Rab1A Antibody (4G10) [NBP3-11043] - Western Blot analysis of Human, Mouse A549 WT and KO cells, MEF, mouse brain cells showing detection of Rab1A protein using Mouse Anti-Rab1A Monoclonal Antibody, Clone 4G10 (NBP3-11043). Lane 1: MW ladder. Lane 2: WT A549 cells. Lane 3-5: KO A549 clones. Lane 6: MEF cells. Lane 7: mouse brain cells.. Load: 10 ug (A549, MEF); 20 ug (Mouse Brain). Primary Antibody: Mouse Anti-Rab1A Monoclonal Antibody (NBP3-11043) at 1:1000.



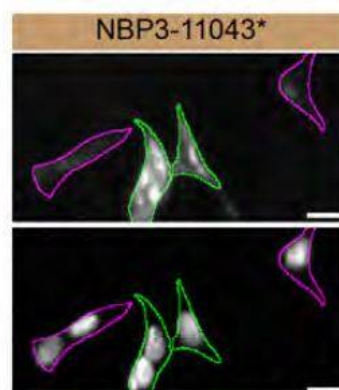
Immunoprecipitation: Rab1A Antibody (4G10) [NBP3-11043] - Immunoprecipitation analysis using Mouse Anti-RAB1A Monoclonal Antibody, Clone 4G10. Tissue: HEK293 cells overexpressing RAB1A, RAB1B, and RAB1C. Species: Human. Primary Antibody: Mouse Anti-RAB1A Monoclonal Antibody.



Western blot shows lysates of HAP1 human near-haploid cell line and Rab1A knockout HAP1 cell line (KO). Nitrocellulose membrane was probed with Rab1A Antibody (Catalog # NBP3-11043) O/N at 4C, followed by HRP-conjugated Secondary Antibody and ECL detection. A specific band was detected for Rab1A (as indicated) in the parental HAP1 cell line, but is not detectable in knockout HAP1 cell line. Primary antibody dilution used: 1/500. The Ponceau stained transfers of each blot are shown. Image, protocol and testing courtesy of YCharOS Inc. (ycharos.com).



HAP1 WT and Rab1A KO cells were labelled with a green or a far-red fluorescent dye, respectively. Cells were stained with Rab1A antibody and with the corresponding Alexa-fluor 555 coupled secondary antibody including DAPI. Acquisition of the blue (nucleus-DAPI), green (identification of WT cells), red (antibody staining) and far-red (identification of KO cells) channels was performed. Representative images of the blue and red (grayscale) channels are shown. WT and KO cells are outlined with green and magenta dashed line, respectively. Antibody dilution used: 1/100. Image, protocol and testing courtesy of YCharOS Inc. (ycharos.com).



**Novus Biologicals USA**

10730 E. Briarwood Avenue
Centennial, CO 80112
USA
Phone: 303.730.1950
Toll Free: 1.888.506.6887
Fax: 303.730.1966
nb-customerservice@bio-techne.com

Bio-Techne Canada

21 Canmotor Ave
Toronto, ON M8Z 4E6
Canada
Phone: 905.827.6400
Toll Free: 855.668.8722
Fax: 905.827.6402
canada.inquires@bio-techne.com

Bio-Techne Ltd

19 Barton Lane
Abingdon Science Park
Abingdon, OX14 3NB, United Kingdom
Phone: (44) (0) 1235 529449
Free Phone: 0800 37 34 15
Fax: (44) (0) 1235 533420
info.EMEA@bio-techne.com

General Contact Information

www.novusbio.com
Technical Support: nb-technical@bio-techne.com
Orders: nb-customerservice@bio-techne.com
General: novus@novusbio.com

Products Related to NBP3-11043-100ug

HAF007	Goat anti-Mouse IgG Secondary Antibody [HRP]
NB720-B	Rabbit anti-Mouse IgG (H+L) Secondary Antibody [Biotin]
NBP1-97005-0.5mg	Mouse IgG1 Isotype Control (MG1)
NBP1-50980-0.05mg	Recombinant Human Rab1A His Protein

Limitations

This product is for research use only and is not approved for use in humans or in clinical diagnosis. Primary Antibodies are guaranteed for 1 year from date of receipt.

For more information on our 100% guarantee, please visit www.novusbio.com/guarantee

Earn gift cards/discounts by submitting a review: www.novusbio.com/reviews/submit/NBP3-11043

Earn gift cards/discounts by submitting a publication using this product:
www.novusbio.com/publications

