

Product Datasheet

NPM1 Antibody (NPM1/3285) - Azide and BSA Free NBP3-08745

Unit Size: 100 ug

Store at -20 to -80C. Avoid freeze-thaw cycles.

www.novusbio.com



technical@novusbio.com

Protocols, Publications, Related Products, Reviews, Research Tools and Images at:
www.novusbio.com/NBP3-08745

Updated 7/16/2024 v.20.1

Earn rewards for product
reviews and publications.

Submit a publication at www.novusbio.com/publications

Submit a review at www.novusbio.com/reviews/destination/NBP3-08745



NBP3-08745

NPM1 Antibody (NPM1/3285) - Azide and BSA Free

Product Information	
Unit Size	100 ug
Concentration	1 mg/ml
Storage	Store at -20 to -80C. Avoid freeze-thaw cycles.
Clonality	Monoclonal
Clone	NPM1/3285
Preservative	No Preservative
Isotype	IgG2c Kappa
Purity	Protein A or G purified
Buffer	10 mM PBS
Target Molecular Weight	33 kDa

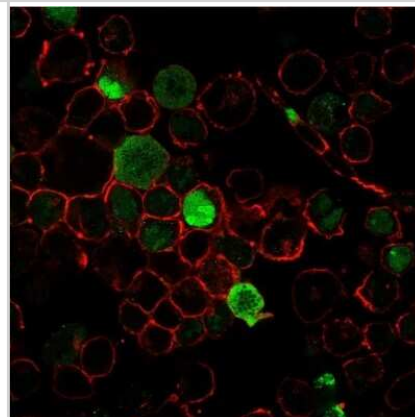
Product Description	
Description	1.0 mg/ml of antibody purified from Bioreactor Concentrate by Protein A/G. Prepared in 10mM PBS WITHOUT BSA & azide. Also available at 200 ug/ml WITH BSA & azide (NBP3-07448). Antibody with azide - store at 2 to 8C. Antibody without azide - store at -20 to -80C.
Host	Mouse
Gene ID	4869
Gene Symbol	NPM1
Species	Human
Marker	Acute Myeloid Leukemia Marker
Specificity/Sensitivity	Recognizes a 33kDa glycoprotein, identified as NPM1 (NPM). It is predominantly localized in the nucleus of cells in most tissues. NPM is involved in ribosomal assembly and rRNA transport. It is an abundant protein that is highly phosphorylated by Cdc2 kinase during mitosis. This phosphoprotein moves between the nucleus and the cytoplasm. It is thought to be involved in several processes including regulation of the ARF/p53 pathway. A number of genes are fusion partners, in particular the anaplastic lymphoma kinase gene on chromosome 2. Mutations in exon 12 affecting the C-terminus of the protein are associated with an aberrant cytoplasmic location. Mutations in this gene are associated with acute myeloid leukemia. The antibody may be a useful aid for classification of acute myeloid leukemia.
Immunogen	Recombinant human NPM1 protein fragment (aa185-287) (exact sequence is proprietary) (Uniprot: P06748)

Product Application Details	
Applications	ELISA, Immunocytochemistry/ Immunofluorescence, Immunohistochemistry, Immunohistochemistry-Paraffin, Protein Array
Recommended Dilutions	ELISA, Immunohistochemistry, Immunocytochemistry/ Immunofluorescence 1-2 ug/ml, Immunohistochemistry-Paraffin, Protein Array
Application Notes	ELISA: Use antibody at 2-4ug/ml. For coating, order antibody without BSA

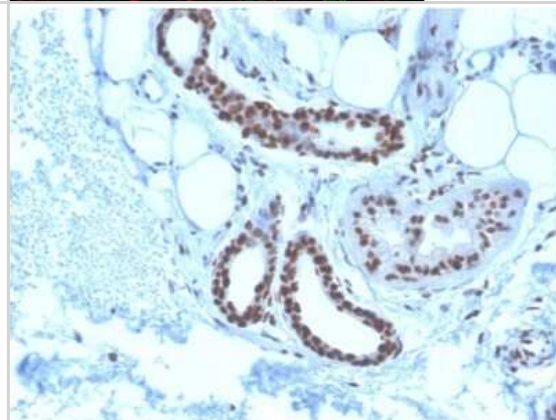


Images

Immunocytochemistry/Immunofluorescence: NPM1 Antibody (NPM1/3285) - Azide and BSA Free [NBP3-08745] - Immunofluorescence staining of K562 cells using NPM1-Monospecific Mouse Monoclonal Antibody (NPM1/3285) followed by goat anti- Mouse IgG-CF488 (green). Nuclei are stained with RedDot.



Immunohistochemistry-Paraffin: NPM1 Antibody (NPM1/3285) - Azide and BSA Free [NBP3-08745] - Formalin-fixed, paraffin-embedded human Basal Cell Carcinoma stained with NPM1-Monospecific Mouse Monoclonal Antibody (NPM1/3285).



Protein Array: NPM1 Antibody (NPM1/3285) - Azide and BSA Free [NBP3-08745] - Analysis of Protein Array containing more than 19,000 full-length human proteins using NPM1 antibody (NPM1/3285)





Novus Biologicals USA

10730 E. Briarwood Avenue
Centennial, CO 80112
USA
Phone: 303.730.1950
Toll Free: 1.888.506.6887
Fax: 303.730.1966
nb-customerservice@bio-techne.com

Bio-Techne Canada

21 Canmotor Ave
Toronto, ON M8Z 4E6
Canada
Phone: 905.827.6400
Toll Free: 855.668.8722
Fax: 905.827.6402
canada.inquires@bio-techne.com

Bio-Techne Ltd

19 Barton Lane
Abingdon Science Park
Abingdon, OX14 3NB, United Kingdom
Phone: (44) (0) 1235 529449
Free Phone: 0800 37 34 15
Fax: (44) (0) 1235 533420
info.EMEA@bio-techne.com

General Contact Information

www.novusbio.com
Technical Support: nb-technical@bio-techne.com
Orders: nb-customerservice@bio-techne.com
General: novus@novusbio.com

Products Related to NBP3-08745

HAF007	Goat anti-Mouse IgG Secondary Antibody [HRP]
NB720-B	Rabbit anti-Mouse IgG (H+L) Secondary Antibody [Biotin]
NB110-61646PEP	NPM1 Antibody Blocking Peptide
NBL1-13748	NPM1 Overexpression Lysate

Limitations

This product is for research use only and is not approved for use in humans or in clinical diagnosis. Primary Antibodies are guaranteed for 1 year from date of receipt.

For more information on our 100% guarantee, please visit www.novusbio.com/guarantee

Earn gift cards/discounts by submitting a review: www.novusbio.com/reviews/submit/NBP3-08745

Earn gift cards/discounts by submitting a publication using this product:
www.novusbio.com/publications

