

# Product Datasheet

## **GTF2IRD2 Antibody (PCRP-GTF2IRD2-1B12) - Azide and BSA Free** **NBP3-08512**

Unit Size: 100 ug

Store at -20 to -80C. Avoid freeze-thaw cycles.

[www.novusbio.com](http://www.novusbio.com)



[technical@novusbio.com](mailto:technical@novusbio.com)

Protocols, Publications, Related Products, Reviews, Research Tools and Images at:  
[www.novusbio.com/NBP3-08512](http://www.novusbio.com/NBP3-08512)

Updated 7/16/2024 v.20.1

Earn rewards for product reviews and publications.

Submit a publication at [www.novusbio.com/publications](http://www.novusbio.com/publications)

Submit a review at [www.novusbio.com/reviews/destination/NBP3-08512](http://www.novusbio.com/reviews/destination/NBP3-08512)



**NBP3-08512**

GTF2IRD2 Antibody (PCRP-GTF2IRD2-1B12) - Azide and BSA Free

Product Information	
Unit Size	100 ug
Concentration	1 mg/ml
Storage	Store at -20 to -80C. Avoid freeze-thaw cycles.
Clonality	Monoclonal
Clone	PCRP-GTF2IRD2-1B12
Preservative	No Preservative
Isotype	IgG2b
Purity	Protein A or G purified
Buffer	10 mM PBS
Target Molecular Weight	107 kDa

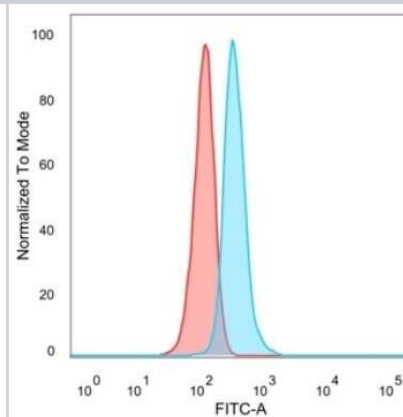
Product Description	
Description	1.0 mg/ml of antibody purified from Bioreactor Concentrate by Protein A/G. Prepared in 10mM PBS WITHOUT BSA & azide. Also available at 200 ug/ml WITH BSA & azide (NBP3-07399).  Antibody with azide - store at 2 to 8C. Antibody without azide - store at -20 to -80 C.
Host	Mouse
Gene ID	84163
Gene Symbol	GTF2IRD2
Species	Human
Immunogen	Recombinant full-length human GTF2IRD2 protein (Uniprot: Q86UP8)

Product Application Details	
Applications	Western Blot, Flow Cytometry, Protein Array
Recommended Dilutions	Western Blot 1-2 ug/ml, Flow Cytometry 1-2 ug/million cells, Protein Array
Application Notes	Optimal dilution for a specific application should be determined.

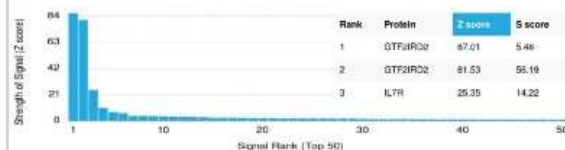


## Images

**Flow Cytometry:** GTF2IRD2 Antibody (PCRP-GTF2IRD2-1B12) [NBP3-08512] - Flow cytometric analysis of PFA-fixed HeLa cells. GTF2IRD2 Mouse Monoclonal Antibody (PCRP-GTF2IRD2-1B12) followed by goat anti- Mouse IgG-CF488 (blue); unstained cells (red).



**Protein Array:** GTF2IRD2 Antibody (PCRP-GTF2IRD2-1B12) [NBP3-08512] - Analysis of Protein Array containing more than 19,000 full-length human proteins using GTF2IRD2 Mouse Monoclonal Antibody (PCRP-GTF2IRD2-1B12).





### **Novus Biologicals USA**

10730 E. Briarwood Avenue  
Centennial, CO 80112  
USA  
Phone: 303.730.1950  
Toll Free: 1.888.506.6887  
Fax: 303.730.1966  
nb-customerservice@bio-techne.com

### **Bio-Techne Canada**

21 Canmotor Ave  
Toronto, ON M8Z 4E6  
Canada  
Phone: 905.827.6400  
Toll Free: 855.668.8722  
Fax: 905.827.6402  
canada.inquires@bio-techne.com

### **Bio-Techne Ltd**

19 Barton Lane  
Abingdon Science Park  
Abingdon, OX14 3NB, United Kingdom  
Phone: (44) (0) 1235 529449  
Free Phone: 0800 37 34 15  
Fax: (44) (0) 1235 533420  
info.EMEA@bio-techne.com

### **General Contact Information**

[www.novusbio.com](http://www.novusbio.com)  
Technical Support: nb-technical@bio-techne.com  
Orders: nb-customerservice@bio-techne.com  
General: novus@novusbio.com

### **Products Related to NBP3-08512**

---

HAF007	Goat anti-Mouse IgG Secondary Antibody [HRP]
NB720-B	Rabbit anti-Mouse IgG (H+L) Secondary Antibody [Biotin]
NBP2-27231	Mouse IgG2b Isotype Control (MPC-11)
H00084163-P01-10ug	Recombinant Human GTF2IRD2 GST (N-Term) Protein

---

### **Limitations**

This product is for research use only and is not approved for use in humans or in clinical diagnosis. Primary Antibodies are guaranteed for 1 year from date of receipt.

For more information on our 100% guarantee, please visit [www.novusbio.com/guarantee](http://www.novusbio.com/guarantee)

Earn gift cards/discounts by submitting a review: [www.novusbio.com/reviews/submit/NBP3-08512](http://www.novusbio.com/reviews/submit/NBP3-08512)

Earn gift cards/discounts by submitting a publication using this product:  
[www.novusbio.com/publications](http://www.novusbio.com/publications)

