

Product Datasheet

APE Antibody (CPTC-APEX1-2) - Azide and BSA Free NBP3-08370

Unit Size: 100 ug

Store at -20 to -80C. Avoid freeze-thaw cycles.

www.novusbio.com



technical@novusbio.com

Protocols, Publications, Related Products, Reviews, Research Tools and Images at:
www.novusbio.com/NBP3-08370

Updated 7/16/2024 v.20.1

Earn rewards for product
reviews and publications.

Submit a publication at www.novusbio.com/publications

Submit a review at www.novusbio.com/reviews/destination/NBP3-08370



NBP3-08370

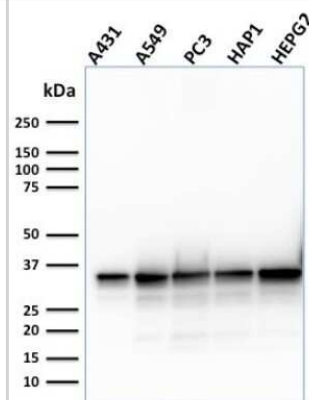
APE Antibody (CPTC-APEX1-2) - Azide and BSA Free

Product Information	
Unit Size	100 ug
Concentration	1 mg/ml
Storage	Store at -20 to -80C. Avoid freeze-thaw cycles.
Clonality	Monoclonal
Clone	CPTC-APEX1-2
Preservative	No Preservative
Isotype	IgG1 Kappa
Purity	Protein A or G purified
Buffer	10 mM PBS
Target Molecular Weight	35 kDa
Product Description	
Description	1.0 mg/ml of antibody purified from Bioreactor Concentrate by Protein A/G. Prepared in 10mM PBS WITHOUT BSA & azide. Also available at 200 ug/ml WITH BSA & azide (NBP3-07864). Antibody with azide - store at 2 to 8C. Antibody without azide - store at -20 to -80C.
Host	Mouse
Gene ID	328
Gene Symbol	APEX1
Species	Human
Immunogen	Recombinant human full-length APE protein (Uniprot: P27695)
Product Application Details	
Applications	Western Blot, ELISA, Flow Cytometry, Immunocytochemistry/ Immunofluorescence, Immunohistochemistry, Immunohistochemistry-Paraffin, Protein Array
Recommended Dilutions	Western Blot 1-2 ug/ml, Flow Cytometry 1-2 ug/million cells, ELISA, Immunohistochemistry, Immunocytochemistry/ Immunofluorescence 1-2 ug/ml, Immunohistochemistry-Paraffin, Protein Array
Application Notes	Immunohistochemistry Formalin-fixed: 1-2ug/ml for 30 minutes at RT. Staining of formalin-fixed tissues requires heating tissue sections in 10mM Tris with 1mM EDTA, pH 9.0, for 45 min at 95C followed by cooling at RT for 20 minutes.

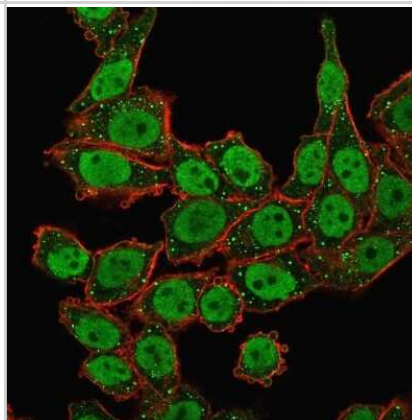


Images

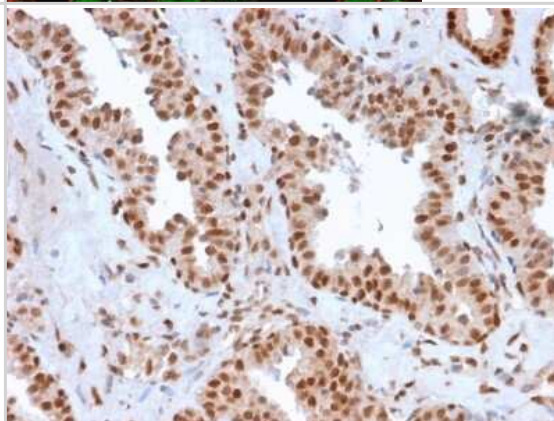
Western Blot: APE Antibody (CPTC-APEX1-2) [NBP3-08370] - Western Blot Analysis of Human A431, A549, PC3, HAP1, HePG2, cell lysate using APE Mouse Monoclonal Antibody (CPTC-APEX1-2).



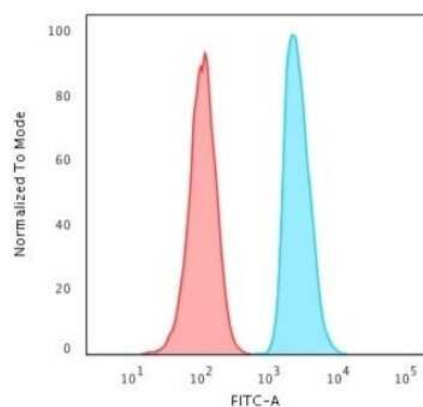
Immunocytochemistry/Immunofluorescence: APE Antibody (CPTC-APEX1-2) [NBP3-08370] - Immunofluorescence Analysis of human HeLa cells labeling APE with APE Mouse Monoclonal Antibody (CPTC-APEX1-2) followed by goat anti-Mouse IgG-CF488 (Green). Phalloidin CF640 stains the membrane red.



Immunohistochemistry-Paraffin: APE Antibody (CPTC-APEX1-2) [NBP3-08370] - Formalin-fixed, paraffin-embedded human Prostate Carcinoma stained with APE Mouse Monoclonal Antibody (CPTC-APEX1-2).



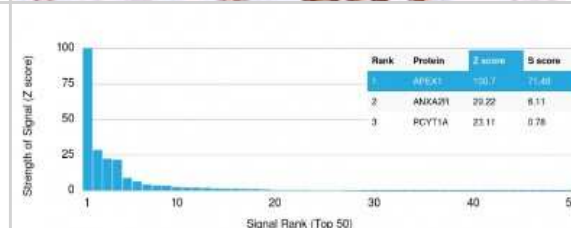
Flow Cytometry: APE Antibody (CPTC-APEX1-2) [NBP3-08370] - Flow Cytometric Analysis of HeLa cells using APE Mouse Monoclonal Antibody (CPTC-APEX1-2). Goat anti-Mouse IgG-CF488 (Blue); Isotype Control (Red).



Immunohistochemistry-Paraffin: APE Antibody (CPTC-APEX1-2) [NBP3-08370] - Formalin-fixed, paraffin-embedded human Prostate Carcinoma stained with APE Mouse Monoclonal Antibody (CPTC-APEX1-2).



Protein Array: APE Antibody (CPTC-APEX1-2) [NBP3-08370] - Analysis of Protein Array containing more than 19,000 full-length human proteins using APE Mouse Monoclonal Antibody (CPTC-APEX1-2).





Novus Biologicals USA

10730 E. Briarwood Avenue
Centennial, CO 80112
USA
Phone: 303.730.1950
Toll Free: 1.888.506.6887
Fax: 303.730.1966
nb-customerservice@bio-techne.com

Bio-Techne Canada

21 Canmotor Ave
Toronto, ON M8Z 4E6
Canada
Phone: 905.827.6400
Toll Free: 855.668.8722
Fax: 905.827.6402
canada.inquires@bio-techne.com

Bio-Techne Ltd

19 Barton Lane
Abingdon Science Park
Abingdon, OX14 3NB, United Kingdom
Phone: (44) (0) 1235 529449
Free Phone: 0800 37 34 15
Fax: (44) (0) 1235 533420
info.EMEA@bio-techne.com

General Contact Information

www.novusbio.com
Technical Support: nb-technical@bio-techne.com
Orders: nb-customerservice@bio-techne.com
General: novus@novusbio.com

Products Related to NBP3-08370

HAF007	Goat anti-Mouse IgG Secondary Antibody [HRP]
NB720-B	Rabbit anti-Mouse IgG (H+L) Secondary Antibody [Biotin]
NBP1-43319-0.5mg	Mouse IgG1 Kappa Isotype Control (P3.6.2.8.1)
NBP1-72280-50ug	Recombinant Human APE T7 Protein

Limitations

This product is for research use only and is not approved for use in humans or in clinical diagnosis. Primary Antibodies are guaranteed for 1 year from date of receipt.

For more information on our 100% guarantee, please visit www.novusbio.com/guarantee

Earn gift cards/discounts by submitting a review: www.novusbio.com/reviews/submit/NBP3-08370

Earn gift cards/discounts by submitting a publication using this product:
www.novusbio.com/publications

