

Product Datasheet

ROR gamma/RORC/NR1F3 Antibody (RORC/2941) - Azide and BSA Free NBP3-08314

Unit Size: 100 ug

Store at -20 to -80C. Avoid freeze-thaw cycles.

www.novusbio.com



technical@novusbio.com

Protocols, Publications, Related Products, Reviews, Research Tools and Images at:
www.novusbio.com/NBP3-08314

Updated 7/16/2024 v.20.1

Earn rewards for product
reviews and publications.

Submit a publication at www.novusbio.com/publications

Submit a review at www.novusbio.com/reviews/destination/NBP3-08314



NBP3-08314

ROR gamma/RORC/NR1F3 Antibody (RORC/2941) - Azide and BSA Free

Product Information	
Unit Size	100 ug
Concentration	1 mg/ml
Storage	Store at -20 to -80C. Avoid freeze-thaw cycles.
Clonality	Monoclonal
Clone	RORC/2941
Preservative	No Preservative
Isotype	IgG2a Kappa
Purity	Protein A or G purified
Buffer	10 mM PBS
Target Molecular Weight	63 kDa

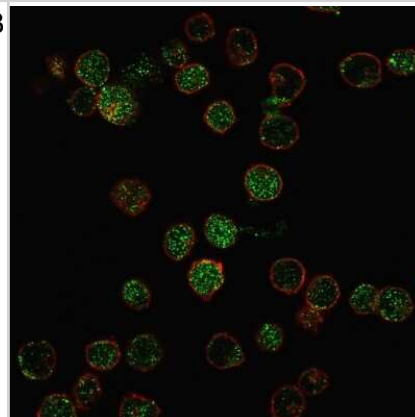
Product Description	
Description	1.0 mg/ml of antibody purified from Bioreactor Concentrate by Protein A/G. Prepared in 10mM PBS WITHOUT BSA & azide. Also available at 200 ug/ml WITH BSA & azide (NBP3-07564). Antibody with azide - store at 2 to 8C. Antibody without azide - store at -20 to -80 C.
Host	Mouse
Gene ID	6097
Gene Symbol	RORC
Species	Human
Specificity/Sensitivity	This monoclonal antibody recognizes a protein of 63kDa, identified as ROR-C. Its epitope maps in between aa1-50. The nuclear orphan receptors ROR are members of the nuclear hormone receptor superfamily. Members of this family act by directly associating with DNA sequences known as hormone response elements (HREs) and typically bind DNA as either homo- or heterodimers. RORalpha and RORgamma are unique in that they bind DNA as monomers. RORalpha has multiple isoforms that share common DNA and putative ligand-binding domains, but differ in their amino terminal domains, which are generated by alternative RNA processing. RORgamma comprises a 560 amino acid protein that shares 50% amino acid identity with RORalpha and is most highly expressed in skeletal muscle. Although these proteins are considered orphan receptors, due to a lack of defined ligands, experimental evidence has shown that melatonin may be the natural ligand for these nuclear receptors.
Immunogen	Recombinant full-length human ROR gamma/RORC/NR1F3 protein (Uniprot: P51449)

Product Application Details	
Applications	Flow Cytometry, Immunocytochemistry/ Immunofluorescence, Immunohistochemistry-Paraffin, Protein Array
Recommended Dilutions	Flow Cytometry 1-2 ug/million cells, Immunocytochemistry/ Immunofluorescence, Immunohistochemistry-Paraffin 1-2 ug/ml, Protein Array
Application Notes	Flow Cytometry: 1-2ug/million cells 3% PFA-fixed cells

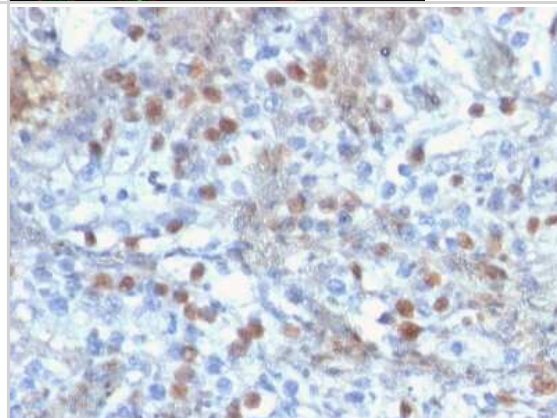


Images

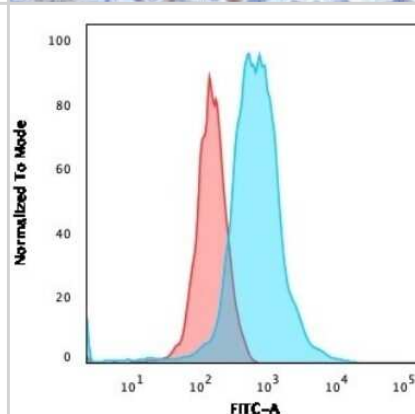
Immunocytochemistry/Immunofluorescence: ROR gamma/RORC/NR1F3 Antibody (RORC/2941) [NBP3-08314] - Immunofluorescence staining of PFA-fixed MOLT4 cells with ROR gamma/RORC/NR1F3 Mouse Monoclonal Antibody (RORC/2941) followed by goat anti- Mouse IgG-CF488. Nuclei counterstained with RedDot.



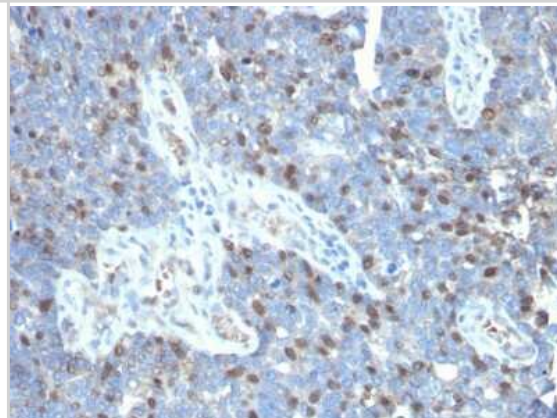
Immunohistochemistry-Paraffin: ROR gamma/RORC/NR1F3 Antibody (RORC/2941) [NBP3-08314] - Formalin-fixed, paraffin-embedded human kidney stained with ROR gamma/RORC/NR1F3 Mouse Monoclonal Antibody (RORC/2941).



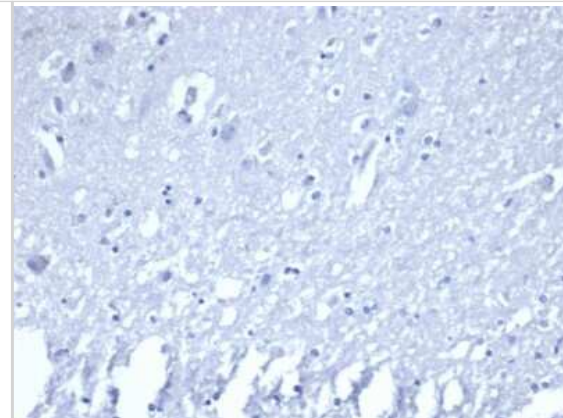
Flow Cytometry: ROR gamma/RORC/NR1F3 Antibody (RORC/2941) [NBP3-08314] - Flow Cytometric Analysis of PFA-fixed MOLT4 cells using ROR gamma/RORC/NR1F3 Mouse Monoclonal Antibody (RORC/2941) followed by goat anti- Mouse IgG-CF488 (blue); isotype control (red).



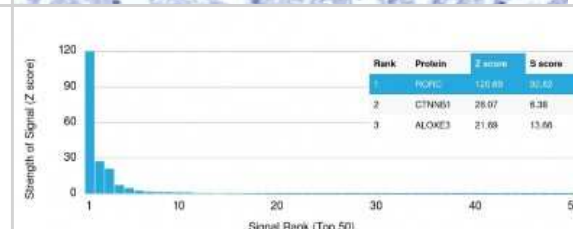
Immunohistochemistry-Paraffin: ROR gamma/RORC/NR1F3 Antibody (RORC/2941) [NBP3-08314] - Formalin-fixed, paraffin-embedded human colon carcinoma stained with ROR gamma/RORC/NR1F3 Mouse Monoclonal Antibody (RORC/2941).



Immunohistochemistry-Paraffin: ROR gamma/RORC/NR1F3 Antibody (RORC/2941) [NBP3-08314] - IHC analysis of formalin-fixed, paraffin-embedded human brain. Negative tissue control using ROR gamma/RORC/NR1F3 antibody (RORC/2941) at 2ug/ml in PBS for 30min RT. HIER: Tris/EDTA, pH9.0, 45min. 2 : HRP-polymer, 30min. DAB, 5min.



Protein Array: ROR gamma/RORC/NR1F3 Antibody (RORC/2941) [NBP3-08314] - Analysis of Protein Array containing more than 19,000 full-length human proteins using ROR gamma/RORC/NR1F3 Mouse Monoclonal Antibody (RORC/2941).





Novus Biologicals USA

10730 E. Briarwood Avenue
Centennial, CO 80112
USA
Phone: 303.730.1950
Toll Free: 1.888.506.6887
Fax: 303.730.1966
nb-customerservice@bio-techne.com

Bio-Techne Canada

21 Canmotor Ave
Toronto, ON M8Z 4E6
Canada
Phone: 905.827.6400
Toll Free: 855.668.8722
Fax: 905.827.6402
canada.inquires@bio-techne.com

Bio-Techne Ltd

19 Barton Lane
Abingdon Science Park
Abingdon, OX14 3NB, United Kingdom
Phone: (44) (0) 1235 529449
Free Phone: 0800 37 34 15
Fax: (44) (0) 1235 533420
info.EMEA@bio-techne.com

General Contact Information

www.novusbio.com
Technical Support: nb-technical@bio-techne.com
Orders: nb-customerservice@bio-techne.com
General: novus@novusbio.com

Products Related to NBP3-08314

HAF007	Goat anti-Mouse IgG Secondary Antibody [HRP]
NB720-B	Rabbit anti-Mouse IgG (H+L) Secondary Antibody [Biotin]
NBP1-96981-0.5mg	Mouse IgG2a Kappa Isotype Control (M2AK)
H00006097-Q01-10ug	Recombinant Human ROR gamma/RORC/NR1F3 GST (N-Term) Protein

Limitations

This product is for research use only and is not approved for use in humans or in clinical diagnosis. Primary Antibodies are guaranteed for 1 year from date of receipt.

For more information on our 100% guarantee, please visit www.novusbio.com/guarantee

Earn gift cards/discounts by submitting a review: www.novusbio.com/reviews/submit/NBP3-08314

Earn gift cards/discounts by submitting a publication using this product:
www.novusbio.com/publications

