

Product Datasheet

HLA DQ/DR/DP Antibody (rHLA-Pan/3475) NBP3-07808-100ug

Unit Size: 100 ug

Store at 4C.

www.novusbio.com



technical@novusbio.com

Protocols, Publications, Related Products, Reviews, Research Tools and Images at:
www.novusbio.com/NBP3-07808

Updated 7/16/2024 v.20.1

Earn rewards for product
reviews and publications.

Submit a publication at www.novusbio.com/publications

Submit a review at www.novusbio.com/reviews/destination/NBP3-07808



NBP3-07808-100ug

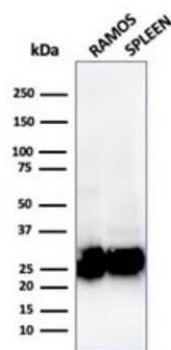
HLA DQ/DR/DP Antibody (rHLA-Pan/3475)

Product Information	
Unit Size	100 ug
Concentration	0.2 mg/ml
Storage	Store at 4C.
Clonality	Monoclonal
Clone	rHLA-Pan/3475
Preservative	0.05% Sodium Azide
Isotype	IgG1 Kappa
Purity	Protein A or G purified
Buffer	10 mM PBS with 0.05% BSA
Product Description	
Description	<p>200ug/ml of antibody purified from Bioreactor Concentrate by Protein A or G. Prepared in 10 mM PBS with 0.05% BSA & 0.05% azide. Also available WITHOUT BSA & azide at 1.0 mg/ml. (NBP3-08644)</p> <p>Antibody with azide - store at 2 to 8C. Antibody without azide - store at -20 to -80 C.</p>
Host	Mouse
Gene ID	3117
Gene Symbol	HLA-DQA1
Species	Human
Specificity/Sensitivity	<p>Reacts with a common epitope of human major histocompatibility (MHC) class II antigens, HLA-DP, -DQ and -DR. Human MHC class II antigens are transmembrane glycoproteins composed of an alpha chain (36kDa) and a beta chain (27kDa). They are expressed primarily on antigen presenting cells such as B lymphocytes, monocytes, macrophages, and thymic epithelial cells and are also present on activated T lymphocytes. Human MHC class II genes are located in the HLA-D region that encodes at least six alpha and ten beta chain genes. Three loci, DR, DQ and DP, encode the major expressed products of the human class II region. The human MHC class II molecules bind intracellularly processed peptides and present them to T-helper cells. They, therefore, have a critical role in the initiation of the immune response.</p>
Immunogen	Non-T, non-B human acute lymphoblastic leukemia REH6 cells
Product Application Details	
Applications	Western Blot, Flow Cytometry, Immunocytochemistry/ Immunofluorescence, Immunohistochemistry-Paraffin
Recommended Dilutions	Western Blot 1-2 ug/ml, Flow Cytometry 1-2 ug/million cells, Immunocytochemistry/ Immunofluorescence 1-2 ug/ml, Immunohistochemistry-Paraffin 1-2 ug/ml
Application Notes	Immunohistochemistry (Formalin-fixed): 1-2ug/ml for 30 minutes at RT. Staining of formalin-fixed tissues requires heating tissue sections in 10mM Tris with 1mM EDTA, pH 9.0, for 45 min at 95C followed by cooling at RT for 20 minutes. Optimal dilution for a specific application should be determined.

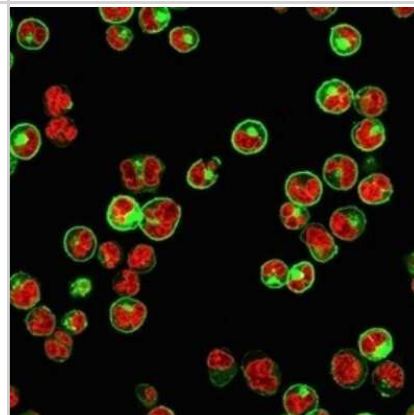


Images

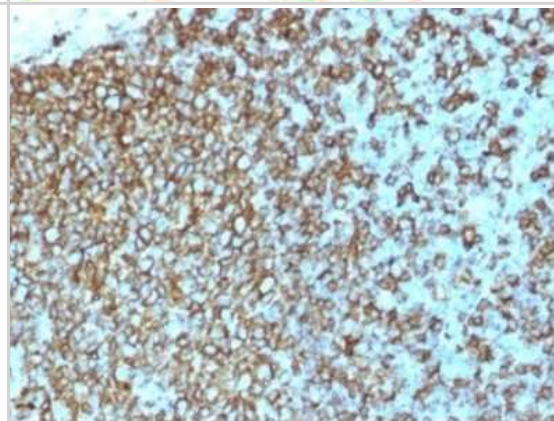
Western Blot: HLA DQ/DR/DP Antibody (rHLA-Pan/3475) [NBP3-07808]
- Western Blot Analysis of (1) Ramos cell and (2) human spleen tissue lysate using HLA DQ/DR/DP antibody (rHLA-Pan/3475).



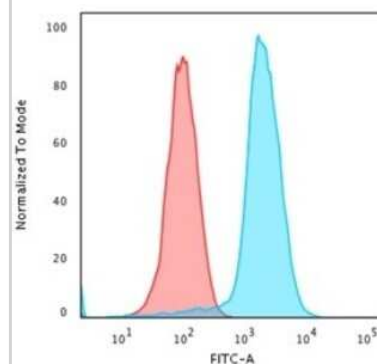
Immunocytochemistry/Immunofluorescence: HLA DQ/DR/DP Antibody (rHLA-Pan/3475) [NBP3-07808] - Immunofluorescence Analysis of Human Raji cells with HLA DQ/DR/DP Mouse Recombinant Monoclonal Antibody (rHLA DQ/DR/DP/3475) followed by goat anti- Mouse IgG- CF488 (Green). The nuclear counterstain is RedDot (Red).



Immunohistochemistry-Paraffin: HLA DQ/DR/DP Antibody (rHLA-Pan/3475) [NBP3-07808] - Formalin-fixed, paraffin-embedded human Tonsil stained with HLA DQ/DR/DP Mouse Recombinant Monoclonal Antibody (rHLA DQ/DR/DP/3475).



Flow Cytometry: HLA DQ/DR/DP Antibody (rHLA-Pan/3475) [NBP3-07808] - Flow Cytometric Analysis of Human Raji cells using HLA DQ/DR/DP Mouse Recombinant Monoclonal Antibody (rHLA DQ/DR/DP/3475) followed by goat anti- Mouse IgG-CF488 (Blue); Isotype control (Red).





Novus Biologicals USA

10730 E. Briarwood Avenue
Centennial, CO 80112
USA
Phone: 303.730.1950
Toll Free: 1.888.506.6887
Fax: 303.730.1966
nb-customerservice@bio-techne.com

Bio-Techne Canada

21 Canmotor Ave
Toronto, ON M8Z 4E6
Canada
Phone: 905.827.6400
Toll Free: 855.668.8722
Fax: 905.827.6402
canada.inquires@bio-techne.com

Bio-Techne Ltd

19 Barton Lane
Abingdon Science Park
Abingdon, OX14 3NB, United Kingdom
Phone: (44) (0) 1235 529449
Free Phone: 0800 37 34 15
Fax: (44) (0) 1235 533420
info.EMEA@bio-techne.com

General Contact Information

www.novusbio.com
Technical Support: nb-technical@bio-techne.com
Orders: nb-customerservice@bio-techne.com
General: novus@novusbio.com

Products Related to NBP3-07808-100ug

HAF007	Goat anti-Mouse IgG Secondary Antibody [HRP]
NB720-B	Rabbit anti-Mouse IgG (H+L) Secondary Antibody [Biotin]
NBP1-43319-0.5mg	Mouse IgG1 Kappa Isotype Control (P3.6.2.8.1)
210-TA-005	TNF-alpha [Unconjugated]

Limitations

This product is for research use only and is not approved for use in humans or in clinical diagnosis. Primary Antibodies are guaranteed for 1 year from date of receipt.

For more information on our 100% guarantee, please visit www.novusbio.com/guarantee

Earn gift cards/discounts by submitting a review: www.novusbio.com/reviews/submit/NBP3-07808

Earn gift cards/discounts by submitting a publication using this product:
www.novusbio.com/publications

