

Product Datasheet

TFF1/pS2 Antibody (TFF1/2133)

NBP3-07341-100ug

Unit Size: 100 ug

Store at 4C.

www.novusbio.com



technical@novusbio.com

Protocols, Publications, Related Products, Reviews, Research Tools and Images at:
www.novusbio.com/NBP3-07341

Updated 7/16/2024 v.20.1

Earn rewards for product
reviews and publications.

Submit a publication at www.novusbio.com/publications

Submit a review at www.novusbio.com/reviews/destination/NBP3-07341



NBP3-07341-100ug

TFF1/pS2 Antibody (TFF1/2133)

Product Information	
Unit Size	100 ug
Concentration	0.2 mg/ml
Storage	Store at 4C.
Clonality	Monoclonal
Clone	TFF1/2133
Preservative	0.05% Sodium Azide
Isotype	IgG2b Kappa
Purity	Protein A or G purified
Buffer	10 mM PBS with 0.05% BSA
Target Molecular Weight	6.5 kDa

Product Description	
Description	<p>200ug/ml of antibody purified from Bioreactor Concentrate by Protein A or G. Prepared in 10 mM PBS with 0.05% BSA & 0.05% azide. Also available WITHOUT BSA & azide at 1.0 mg/ml. (NBP3-08247)</p> <p>Antibody with azide - store at 2 to 8C. Antibody without azide - store at -20 to -80C.</p>
Host	Mouse
Gene ID	7031
Gene Symbol	TFF1
Species	Human
Specificity/Sensitivity	<p>It recognizes a polypeptide of 6.5kDa, identified as pS2 estrogen-regulated protein. Its epitope is located in the c-terminus of human pS2 protein. pS2 is a trefoil peptide. Trefoil peptides are protease resistant molecules secreted throughout the gut that play a role in mucosal healing. These peptides contain three intra-chain disulfide bonds, forming the trefoil motif, or P-domain. pS2 is known to form dimers and this dimerization is thought to play a role in its protective and healing properties. About 60% of breast carcinomas are positive for pS2. Staining is cytoplasmic, often with localization to the Golgi apparatus. pS2 is shown to be localized in normal stomach mucosa, gastric fluid, goblet cells in the colon and small intestine, and in ulcerations of the gastrointestinal tract. Several studies have shown that pS2 is primarily expressed in estrogen receptor-positive breast tumors and it may define a subset of estrogen-dependent tumors that displays an increased likelihood of response to endocrine therapy.</p>
Immunogen	Recombinant full-length human TFF1/pS2 protein (Uniprot: P04155)

Product Application Details	
Applications	Flow Cytometry, Immunocytochemistry/ Immunofluorescence, Immunohistochemistry, Immunohistochemistry-Paraffin, Protein Array
Recommended Dilutions	Flow Cytometry 1-2 ug/million cells, Immunohistochemistry, Immunocytochemistry/ Immunofluorescence 1-2 ug/ml, Immunohistochemistry-Paraffin 1-2 ug/ml, Protein Array

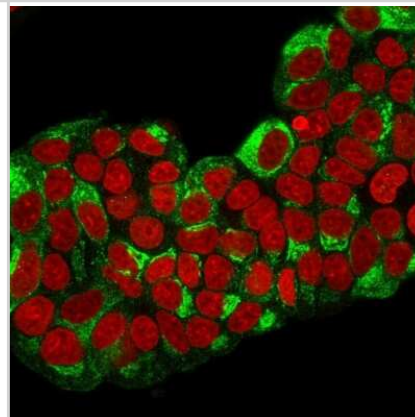


Application Notes

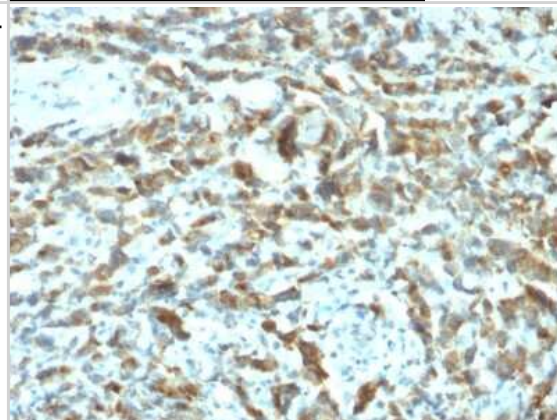
Immunohistochemistry (Formalin-fixed): 1-2ug/ml for 30 minutes at RT. Staining of formalin-fixed tissues requires heating tissue sections in 10mM Tris with 1mM EDTA, pH 9.0, for 45 min at 95C followed by cooling at RT for 20 minutes. Optimal dilution for a specific application should be determined.

Images

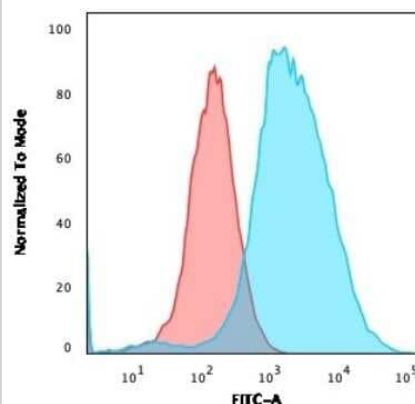
Immunocytochemistry/Immunofluorescence: TFF1/pS2 Antibody (TFF1/2133) [NBP3-07341] - Immunofluorescence staining of paraformaldehyde-fixed MCF-7 cells with TFF1/pS2 Mouse Monoclonal Antibody (TFF1/2133) followed by goat anti- Mouse IgG-CF488 (Green). Nucleus is labeled with RedDot(Red).



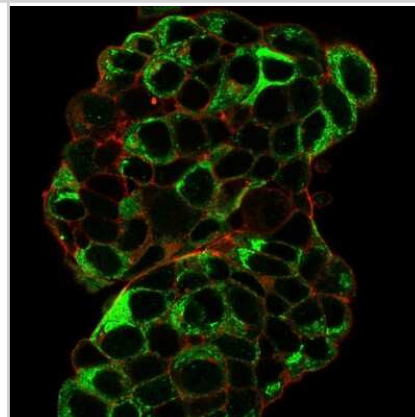
Immunohistochemistry-Paraffin: TFF1/pS2 Antibody (TFF1/2133) [NBP3-07341] - Formalin-fixed, paraffin-embedded human Breast Carcinoma stained with TFF1/pS2 Mouse Monoclonal Antibody (TFF1/2133).



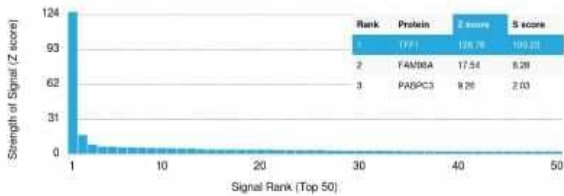
Flow Cytometry: TFF1/pS2 Antibody (TFF1/2133) [NBP3-07341] - Flow Cytometric Analysis of PFA-fixed MCF-7 cells using TFF1/pS2 Mouse Monoclonal Antibody (TFF1/2133) followed by goat anti- Mouse IgG-CF488 (Blue); Isotype Control (Red).



Immunocytochemistry/Immunofluorescence: TFF1/pS2 Antibody (TFF1/2133) [NBP3-07341] - Immunofluorescence staining of paraformaldehyde-fixed MCF-7 cells with TFF1/pS2 Mouse Monoclonal Antibody (TFF1/2133) followed by goat anti- Mouse IgG-CF488 (Green). Membrane are labeled with phalloidin (Red).



Protein Array: TFF1/pS2 Antibody (TFF1/2133) [NBP3-07341] - Analysis of Protein Array containing more than 19,000 full-length human proteins using TFF1/pS2 Mouse Monoclonal Antibody (TFF1/2133).





Novus Biologicals USA

10730 E. Briarwood Avenue
Centennial, CO 80112
USA
Phone: 303.730.1950
Toll Free: 1.888.506.6887
Fax: 303.730.1966
nb-customerservice@bio-techne.com

Bio-Techne Canada

21 Canmotor Ave
Toronto, ON M8Z 4E6
Canada
Phone: 905.827.6400
Toll Free: 855.668.8722
Fax: 905.827.6402
canada.inquires@bio-techne.com

Bio-Techne Ltd

19 Barton Lane
Abingdon Science Park
Abingdon, OX14 3NB, United Kingdom
Phone: (44) (0) 1235 529449
Free Phone: 0800 37 34 15
Fax: (44) (0) 1235 533420
info.EMEA@bio-techne.com

General Contact Information

www.novusbio.com
Technical Support: nb-technical@bio-
techne.com
Orders: nb-customerservice@bio-techne.com
General: novus@novusbio.com

Products Related to NBP3-07341-100ug

HAF007	Goat anti-Mouse IgG Secondary Antibody [HRP]
NB720-B	Rabbit anti-Mouse IgG (H+L) Secondary Antibody [Biotin]
NBP1-43317-0.5mg	Mouse IgG2b Kappa Light Chain Isotype Control (MG2b)
NBP2-35042-5ug	Recombinant Human TFF1/pS2 Protein

Limitations

This product is for research use only and is not approved for use in humans or in clinical diagnosis. Primary Antibodies are guaranteed for 1 year from date of receipt.

For more information on our 100% guarantee, please visit www.novusbio.com/guarantee

Earn gift cards/discounts by submitting a review: www.novusbio.com/reviews/submit/NBP3-07341

Earn gift cards/discounts by submitting a publication using this product:
www.novusbio.com/publications

