

# Product Datasheet

## U-138 MG Whole Cell Lysate

### NBP3-06999

Unit Size: 500 ug

Store at -70C. Avoid freeze-thaw cycles.

[www.novusbio.com](http://www.novusbio.com)



[technical@novusbio.com](mailto:technical@novusbio.com)

Protocols, Publications, Related Products, Reviews, Research Tools and Images at:  
[www.novusbio.com/NBP3-06999](http://www.novusbio.com/NBP3-06999)

Updated 7/23/2023 v.20.1

Earn rewards for product  
reviews and publications.

Submit a publication at [www.novusbio.com/publications](http://www.novusbio.com/publications)

Submit a review at [www.novusbio.com/reviews/destination/NBP3-06999](http://www.novusbio.com/reviews/destination/NBP3-06999)



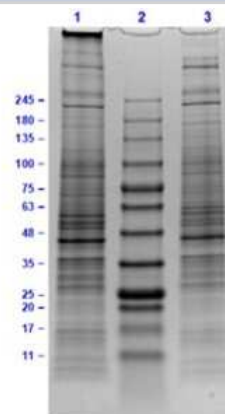
**NBP3-06999****U-138 MG Whole Cell Lysate**

<b>Product Information</b>	
<b>Unit Size</b>	500 ug
<b>Concentration</b>	Please contact technical services for concentration.
<b>Storage</b>	Store at -70C. Avoid freeze-thaw cycles.
<b>Preservative</b>	No Preservative
<b>Purity</b>	Multi-step
<b>Buffer</b>	1X SDS-PAGE Sample Buffer (62.5 mM Tris HCl, 2% SDS, 10% Glycerol and 0.005% bromophenol blue, pH 6.8), 10% (v/v) Glycerol
<b>Product Description</b>	
<b>Description</b>	Store vial at -70C or COLDER. For extended storage, aliquot contents to minimize freeze/thaw cycles.
<b>Species</b>	Human
<b>Preparation Method</b>	The U-138 MG cells were grown in Dulbecco's medium supplemented with 10% fetal bovine serum. Cells were washed with PBS and then incubated on ice in modified RIPA buffer, containing 150 mM sodium chloride, 50 mM Tris HCl, pH 7.4, 1 mM EDTA, 1.0% NP-40, 0.5% sodium deoxycholic acid, 0.1% SDS and 0.01% (w/v) sodium azide to lyse the cells. Protein integrity was ensured using a cocktail of protease inhibitors with broad specificity for the inhibition of aspartic, cysteine, and serine proteases as well as aminopeptidases (0.1 mM AEBSF HCl, 0.08 uM Aprotinin, 5 uM Bestatin, 1.5 uM E-64, 2 uM Leupeptin Hemisulfate, 1 uM Pepstatin A). Phosphatase inhibitors 1 mM NaF and 1 mM Na <sub>3</sub> VO <sub>4</sub> were also added. Cell debris was removed by centrifugation. Protein concentration was determined by a modified SDS assay using a commercially available kit. Protein concentration was adjusted to 2 mg/mL and then an equal volume of 2X SDS-PAGE sample buffer was added.
<b>Lysate Type</b>	Cell
<b>Lysate Subcellular Fraction</b>	Whole
<b>Product Application Details</b>	
<b>Applications</b>	Western Blot, SDS-Page
<b>Recommended Dilutions</b>	Western Blot, SDS-Page
<b>Application Notes</b>	This product has been tested by SDS-PAGE. Ready-to-use lysates are especially prepared as positive controls for separation by SDS-PAGE and subsequent western blot analysis. Lysates are prepared in denaturing buffer WITHOUT dissociating agents (i.e. no 2-mercaptoethanol or dithiothreitol has been added). Heat lysate to 95C for 5 minutes and rapidly cool. If dissociating conditions are desired, add reducing agent prior to heating. The recommended loading volume per lane is 10-20 uL depending on the size format of your gel.



## Images

SDS-Page: U-138 MG Whole Cell Lysate [NBP3-06999] - SDS-PAGE Results of U-138 MG Whole Cell Lysate. Lane 1: U-138 MG Whole Cell lysate(10ug) Reduced. Lane 2: Opal Prestained Molecular Weight Marker. Lane 3: U-138 MG Whole Cell lysate(10ug) Non-Reduced. Results show wide range of molecular weight bands and no sign of degradation.





### **Novus Biologicals USA**

10730 E. Briarwood Avenue  
Centennial, CO 80112  
USA  
Phone: 303.730.1950  
Toll Free: 1.888.506.6887  
Fax: 303.730.1966  
nb-customerservice@bio-techne.com

### **Bio-Techne Canada**

21 Canmotor Ave  
Toronto, ON M8Z 4E6  
Canada  
Phone: 905.827.6400  
Toll Free: 855.668.8722  
Fax: 905.827.6402  
canada.inquires@bio-techne.com

### **Bio-Techne Ltd**

19 Barton Lane  
Abingdon Science Park  
Abingdon, OX14 3NB, United Kingdom  
Phone: (44) (0) 1235 529449  
Free Phone: 0800 37 34 15  
Fax: (44) (0) 1235 533420  
info.EMEA@bio-techne.com

### **General Contact Information**

[www.novusbio.com](http://www.novusbio.com)  
Technical Support: nb-technical@bio-techne.com  
Orders: nb-customerservice@bio-techne.com  
General: novus@novusbio.com

### **Limitations**

This product is for research use only and is not approved for use in humans or in clinical diagnosis. Lysates are guaranteed for 6 months from date of receipt.

For more information on our 100% guarantee, please visit [www.novusbio.com/guarantee](http://www.novusbio.com/guarantee)

Earn gift cards/discounts by submitting a review: [www.novusbio.com/reviews/submit/NBP3-06999](http://www.novusbio.com/reviews/submit/NBP3-06999)

Earn gift cards/discounts by submitting a publication using this product:  
[www.novusbio.com/publications](http://www.novusbio.com/publications)

