

# Product Datasheet

## Human MMP-24/MT5-MMP ELISA Kit (Colorimetric) NBP3-06891

Unit Size: 1 Kit

Storage of components varies. See protocol for specific instructions.

[www.novusbio.com](http://www.novusbio.com)



[technical@novusbio.com](mailto:technical@novusbio.com)

Protocols, Publications, Related Products, Reviews, Research Tools and Images at:  
[www.novusbio.com/NBP3-06891](http://www.novusbio.com/NBP3-06891)

Updated 9/23/2021 v.20.1

Earn rewards for product  
reviews and publications.

Submit a publication at [www.novusbio.com/publications](http://www.novusbio.com/publications)

Submit a review at [www.novusbio.com/reviews/destination/NBP3-06891](http://www.novusbio.com/reviews/destination/NBP3-06891)



**NBP3-06891****Human MMP-24/MT5-MMP ELISA Kit (Colorimetric)**

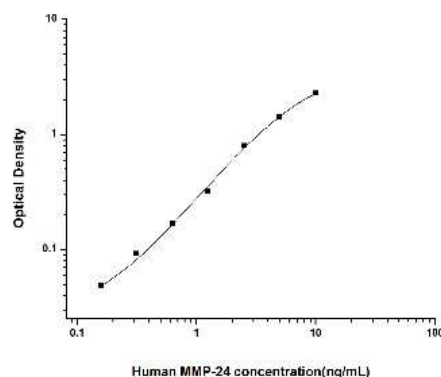
<b>Product Information</b>	
<b>Unit Size</b>	1 Kit
<b>Concentration</b>	Concentration is not relevant for this product. Please see the protocols for proper use of this product.
<b>Storage</b>	Storage of components varies. See protocol for specific instructions.

<b>Product Description</b>	
<b>Gene ID</b>	10893
<b>Gene Symbol</b>	MMP24
<b>Species</b>	Human
<b>Specificity/Sensitivity</b>	This kit recognizes Human MMP-24/MT5-MMP in samples. No significant cross-reactivity or interference between Human MMP-24/MT5-MMP and analogues was observed.
<b>Kit Components</b>	Micro ELISA Plate(Dismountable), Reference Standard, Concentrated Biotinylated Detection Ab (100x), Concentrated HRP Conjugate (100x), Reference Standard & Sample Diluent, Biotinylated Detection Ab Diluent, HRP Conjugate Diluent, Concentrated Wash Buffer (25x), Substrate Reagent, Stop Solution, Plate Sealer, Product Description, Certificate of Analysis
<b>Standard Curve Range</b>	0.16 - 10 ng/mL
<b>Sensitivity</b>	0.09 ng/mL
<b>Inter Assay</b>	5.89
<b>Intra Assay</b>	4.78
<b>Assay Type</b>	Sandwich-ELISA
<b>Spiking Recovery</b>	84-99 %
<b>Suitable Sample Type</b>	Serum, Plasma, Cell supernatant
<b>Sample Volume</b>	100 ul

<b>Product Application Details</b>	
<b>Applications</b>	ELISA, Sandwich ELISA
<b>Recommended Dilutions</b>	ELISA, Sandwich ELISA

**Images**

ELISA: Human MMP-24/MT5-MMP ELISA Kit (Colorimetric) [NBP3-06891] - Standard Curve Reference.





### **Novus Biologicals USA**

10730 E. Briarwood Avenue  
Centennial, CO 80112  
USA  
Phone: 303.730.1950  
Toll Free: 1.888.506.6887  
Fax: 303.730.1966  
nb-customerservice@bio-techne.com

### **Bio-Techne Canada**

21 Canmotor Ave  
Toronto, ON M8Z 4E6  
Canada  
Phone: 905.827.6400  
Toll Free: 855.668.8722  
Fax: 905.827.6402  
canada.inquires@bio-techne.com

### **Bio-Techne Ltd**

19 Barton Lane  
Abingdon Science Park  
Abingdon, OX14 3NB, United Kingdom  
Phone: (44) (0) 1235 529449  
Free Phone: 0800 37 34 15  
Fax: (44) (0) 1235 533420  
info.EMEA@bio-techne.com

### **General Contact Information**

www.novusbio.com  
Technical Support: nb-technical@bio-techne.com  
Orders: nb-customerservice@bio-techne.com  
General: novus@novusbio.com

### **Products Related to NBP3-06891**

---

DMP900	MMP-9 [HRP]
AB924	MMP-24/MT5-MMP Antibody
MMP200	MMP-2 [HRP]
DTM100	TIMP-1 [HRP]

---

### **Limitations**

This product is for research use only and is not approved for use in humans or in clinical diagnosis. ELISA Kits are guaranteed for 6 months from date of receipt.

For more information on our 100% guarantee, please visit [www.novusbio.com/guarantee](http://www.novusbio.com/guarantee)

Earn gift cards/discounts by submitting a review: [www.novusbio.com/reviews/submit/NBP3-06891](http://www.novusbio.com/reviews/submit/NBP3-06891)

Earn gift cards/discounts by submitting a publication using this product:  
[www.novusbio.com/publications](http://www.novusbio.com/publications)

