

Product Datasheet

METTL1 Antibody (9C2F2) - Azide and BSA Free NBP3-06651-100ul

Unit Size: 100 ul

Store at 4C short term. Aliquot and store at -20C long term. Avoid freeze-thaw cycles.

www.novusbio.com



technical@novusbio.com

Protocols, Publications, Related Products, Reviews, Research Tools and Images at:
www.novusbio.com/NBP3-06651

Updated 2/26/2025 v.20.1

Earn rewards for product
reviews and publications.

Submit a publication at www.novusbio.com/publications

Submit a review at www.novusbio.com/reviews/destination/NBP3-06651



NBP3-06651-100ul

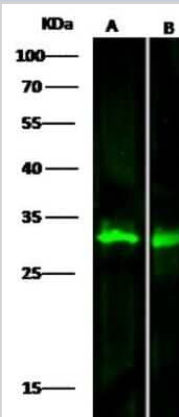
METTL1 Antibody (9C2F2) - Azide and BSA Free

Product Information	
Unit Size	100 ul
Concentration	Please see the vial label for concentration. If unlisted please contact technical services.
Storage	Store at 4C short term. Aliquot and store at -20C long term. Avoid freeze-thaw cycles.
Clonality	Monoclonal
Clone	9C2F2
Preservative	No Preservative
Isotype	IgG1
Purity	Protein A purified
Buffer	0.2 um filtered solution in PBS
Product Description	
Description	This antibody can be stored at 2C-8C for one month without detectable loss of activity. Antibody products are stable for twelve months from date of receipt when stored at -20C to -80C. Avoid repeated freeze-thaw cycles.
Host	Mouse
Gene ID	4234
Gene Symbol	METTL1
Species	Human
Reactivity Notes	No cross-reactivity in ELISA with: E.coli cell lysate
Specificity/Sensitivity	No cross-reactivity in ELISA with: E.coli cell lysate
Immunogen	This antibody was produced from a hybridoma resulting from the fusion of a mouse myeloma with B cells obtained from a mouse immunized with purified, recombinant Human METTL1 (Accession#: NP_005362.3; Asp 32-Gln 265).
Product Application Details	
Applications	Western Blot, ELISA, Immunoprecipitation, Sandwich ELISA Detection
Recommended Dilutions	Western Blot 1:500-1:2000, ELISA 1:1000-1:2000, Immunoprecipitation 4-6 uL/mg of lysate, Sandwich ELISA Detection
Application Notes	This antibody will detect Human METTL1 in ELISA pair set (Catalog: # NBP2-79646). In a sandwich ELISA, it can be used as a detection antibody when paired with (Catalog: # NBP3-06375).

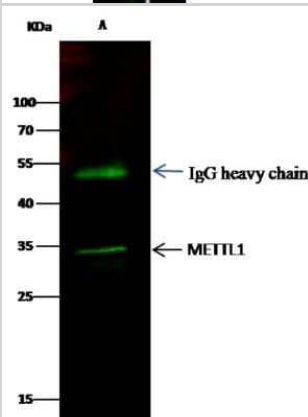


Images

Western Blot: METTL1 Antibody (9C2F2) [NBP3-06651] - NBP3-06651 at 1:500 dilution. Lane A: 293T Whole Cell Lysate. Lane B: Jurkat Whole Cell Lysate. Lysates/proteins at 30 ug per lane. Secondary: Goat Anti-Mouse IgG H&L (Dylight800) at 1/15000 dilution. Developed using the Odyssey technique and performed under reducing conditions. A band appears at an observed molecular weight of 31 kDa.



Western Blot: METTL1 Antibody (9C2F2) [NBP3-06651] - METTL1 was immunoprecipitated using: Lane A: 0.5 mg HepG2 Whole Cell Lysate. Lane B: 0.5 mg Jurkat Whole Cell Lysate. 2 uL NBP3-06651 and 15 ul of 50 % Protein G agarose. Primary antibody: NBP3-06651 at 1:100 dilution. Secondary antibody: Dylight 800-labeled antibody to Mouse IgG (H+L), at 1:7500 dilution. Developed using the Odyssey technique and performed under reducing conditions. A band appears at an observed molecular weight of 34 kDa.





Novus Biologicals USA

10730 E. Briarwood Avenue
Centennial, CO 80112
USA
Phone: 303.730.1950
Toll Free: 1.888.506.6887
Fax: 303.730.1966
nb-customerservice@bio-techne.com

Bio-Techne Canada

21 Canmotor Ave
Toronto, ON M8Z 4E6
Canada
Phone: 905.827.6400
Toll Free: 855.668.8722
Fax: 905.827.6402
canada.inquires@bio-techne.com

Bio-Techne Ltd

19 Barton Lane
Abingdon Science Park
Abingdon, OX14 3NB, United Kingdom
Phone: (44) (0) 1235 529449
Free Phone: 0800 37 34 15
Fax: (44) (0) 1235 533420
info.EMEA@bio-techne.com

General Contact Information

www.novusbio.com
Technical Support: nb-technical@bio-techne.com
Orders: nb-customerservice@bio-techne.com
General: novus@novusbio.com

Products Related to NBP3-06651-100ul

HAF007	Goat anti-Mouse IgG Secondary Antibody [HRP]
NB720-B	Rabbit anti-Mouse IgG (H+L) Secondary Antibody [Biotin]
NBP1-97005-0.5mg	Mouse IgG1 Isotype Control (MG1)
NBP1-50953-0.05mg	Recombinant Human METTL1 His Protein

Limitations

This product is for research use only and is not approved for use in humans or in clinical diagnosis. Primary Antibodies are guaranteed for 1 year from date of receipt.

For more information on our 100% guarantee, please visit www.novusbio.com/guarantee

Earn gift cards/discounts by submitting a review: www.novusbio.com/reviews/submit/NBP3-06651

Earn gift cards/discounts by submitting a publication using this product:
www.novusbio.com/publications

