

Product Datasheet

PA28 Activator beta Subunit/PSME2 Antibody (06) - Azide and BSA Free NBP3-06553-200ul

Unit Size: 200 ul

Store at 4C short term. Aliquot and store at -20C long term. Avoid freeze-thaw cycles.

www.novusbio.com



technical@novusbio.com

Protocols, Publications, Related Products, Reviews, Research Tools and Images at:
www.novusbio.com/NBP3-06553

Updated 4/21/2025 v.20.1

Earn rewards for product
reviews and publications.

Submit a publication at www.novusbio.com/publications

Submit a review at www.novusbio.com/reviews/destination/NBP3-06553



NBP3-06553-200ul

PA28 Activator beta Subunit/PSME2 Antibody (06) - Azide and BSA Free

Product Information	
Unit Size	200 ul
Concentration	Please see the vial label for concentration. If unlisted please contact technical services.
Storage	Store at 4C short term. Aliquot and store at -20C long term. Avoid freeze-thaw cycles.
Clonality	Monoclonal
Clone	06
Preservative	No Preservative
Isotype	IgG1
Purity	Protein A purified
Buffer	0.2 um filtered solution in PBS

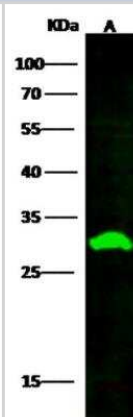
Product Description	
Description	This antibody can be stored at 2C-8C for one month without detectable loss of activity. Antibody products are stable for twelve months from date of receipt when stored at -20C to -80C. Avoid repeated freeze-thaw cycles.
Host	Mouse
Gene ID	5721
Gene Symbol	PSME2
Species	Human
Reactivity Notes	No cross-reactivity in ELISA with: E.coli cell lysate
Specificity/Sensitivity	No cross-reactivity in ELISA with: E.coli cell lysate
Immunogen	This antibody was produced from a hybridoma resulting from the fusion of a mouse myeloma with B cells obtained from a mouse immunized with purified, recombinant Human PA28 Activator beta Subunit/PSME2 (Accession#: Met1-Tyr239).

Product Application Details	
Applications	Western Blot, ELISA, Immunoprecipitation
Recommended Dilutions	Western Blot 1:500-1:2000, ELISA 1:1000-1:2000, Immunoprecipitation 1-4 uL/mg of lysate

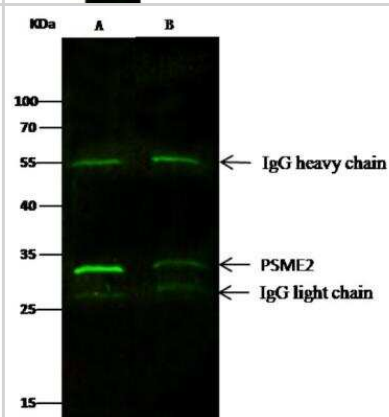


Images

Western Blot: PA28 Activator beta Subunit/PSME2 Antibody (06) [NBP3-06553] - Lane A: Hela Whole Cell Lysate Lysates/proteins at 30 ug per lane. Secondary Goat Anti-Mouse IgG H&L (Dylight800) at 1/15000 dilution. Developed using the Odyssey technique. Performed under reducing conditions. Predicted band size:27 kDa Observed band size:30 kDa



Immunoprecipitation: PA28 Activator beta Subunit/PSME2 Antibody (06) [NBP3-06553] - Lane A:0.5 mg Hela Whole Cell Lysate Lane B:0.5 mg HepG2 Whole Cell Lysate 2 uL anti-PSME2 mouse monoclonal antibody and 15 ul of 50 % Protein G agarose. Primary antibody: Anti-PSME2 mouse monoclonal antibody, at 1:100 dilution Secondary antibody: Dylight 800-labeled antibody to Mouse IgG (H+L), at 1:7500 dilution Developed using the odssey technique. Performed under reducing conditions. Predicted band size: 27 kDa Observed band size: 27 kDa





Novus Biologicals USA

10730 E. Briarwood Avenue
Centennial, CO 80112
USA
Phone: 303.730.1950
Toll Free: 1.888.506.6887
Fax: 303.730.1966
nb-customerservice@bio-techne.com

Bio-Techne Canada

21 Canmotor Ave
Toronto, ON M8Z 4E6
Canada
Phone: 905.827.6400
Toll Free: 855.668.8722
Fax: 905.827.6402
canada.inquires@bio-techne.com

Bio-Techne Ltd

19 Barton Lane
Abingdon Science Park
Abingdon, OX14 3NB, United Kingdom
Phone: (44) (0) 1235 529449
Free Phone: 0800 37 34 15
Fax: (44) (0) 1235 533420
info.EMEA@bio-techne.com

General Contact Information

www.novusbio.com
Technical Support: nb-technical@bio-techne.com
Orders: nb-customerservice@bio-techne.com
General: novus@novusbio.com

Limitations

This product is for research use only and is not approved for use in humans or in clinical diagnosis. Primary Antibodies are guaranteed for 1 year from date of receipt.

For more information on our 100% guarantee, please visit www.novusbio.com/guarantee

Earn gift cards/discounts by submitting a review: www.novusbio.com/reviews/submit/NBP3-06553

Earn gift cards/discounts by submitting a publication using this product:
www.novusbio.com/publications

