

# Product Datasheet

## **PA28 Activator beta Subunit/PSME2 Antibody (06) - Azide and BSA Free NBP3-06553-100ul**

Unit Size: 100 ul

Store at 4C short term. Aliquot and store at -20C long term. Avoid freeze-thaw cycles.

[www.novusbio.com](http://www.novusbio.com)



[technical@novusbio.com](mailto:technical@novusbio.com)

Protocols, Publications, Related Products, Reviews, Research Tools and Images at:  
[www.novusbio.com/NBP3-06553](http://www.novusbio.com/NBP3-06553)

Updated 4/21/2025 v.20.1

Earn rewards for product  
reviews and publications.

Submit a publication at [www.novusbio.com/publications](http://www.novusbio.com/publications)

Submit a review at [www.novusbio.com/reviews/destination/NBP3-06553](http://www.novusbio.com/reviews/destination/NBP3-06553)



**NBP3-06553-100ul**

PA28 Activator beta Subunit/PSME2 Antibody (06) - Azide and BSA Free

Product Information	
Unit Size	100 ul
Concentration	Please see the vial label for concentration. If unlisted please contact technical services.
Storage	Store at 4C short term. Aliquot and store at -20C long term. Avoid freeze-thaw cycles.
Clonality	Monoclonal
Clone	06
Preservative	No Preservative
Isotype	IgG1
Purity	Protein A purified
Buffer	0.2 um filtered solution in PBS

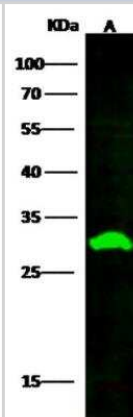
Product Description	
Description	This antibody can be stored at 2C-8C for one month without detectable loss of activity. Antibody products are stable for twelve months from date of receipt when stored at -20C to -80C. Avoid repeated freeze-thaw cycles.
Host	Mouse
Gene ID	5721
Gene Symbol	PSME2
Species	Human
Reactivity Notes	No cross-reactivity in ELISA with:  E.coli cell lysate
Specificity/Sensitivity	No cross-reactivity in ELISA with:  E.coli cell lysate
Immunogen	This antibody was produced from a hybridoma resulting from the fusion of a mouse myeloma with B cells obtained from a mouse immunized with purified, recombinant Human PA28 Activator beta Subunit/PSME2 (Accession#: Met1-Tyr239).

Product Application Details	
Applications	Western Blot, ELISA, Immunoprecipitation
Recommended Dilutions	Western Blot 1:500-1:2000, ELISA 1:1000-1:2000, Immunoprecipitation 1-4 uL/mg of lysate

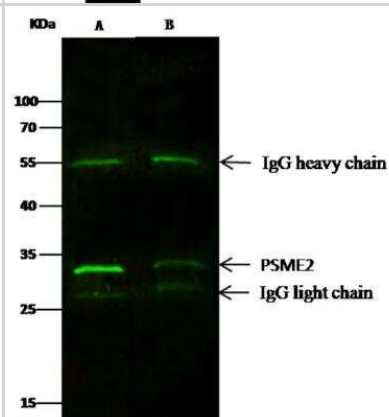


## Images

Western Blot: PA28 Activator beta Subunit/PSME2 Antibody (06) [NBP3-06553] - Lane A: Hela Whole Cell Lysate Lysates/proteins at 30 ug per lane. Secondary Goat Anti-Mouse IgG H&L (Dylight800) at 1/15000 dilution. Developed using the Odyssey technique. Performed under reducing conditions. Predicted band size:27 kDa Observed band size:30 kDa



Immunoprecipitation: PA28 Activator beta Subunit/PSME2 Antibody (06) [NBP3-06553] - Lane A:0.5 mg Hela Whole Cell Lysate Lane B:0.5 mg HepG2 Whole Cell Lysate 2 uL anti-PSME2 mouse monoclonal antibody and 15 ul of 50 % Protein G agarose. Primary antibody: Anti-PSME2 mouse monoclonal antibody, at 1:100 dilution Secondary antibody: Dylight 800-labeled antibody to Mouse IgG (H+L), at 1:7500 dilution Developed using the odssey technique. Performed under reducing conditions. Predicted band size: 27 kDa Observed band size: 27 kDa





### **Novus Biologicals USA**

10730 E. Briarwood Avenue  
Centennial, CO 80112  
USA  
Phone: 303.730.1950  
Toll Free: 1.888.506.6887  
Fax: 303.730.1966  
nb-customerservice@bio-techne.com

### **Bio-Techne Canada**

21 Canmotor Ave  
Toronto, ON M8Z 4E6  
Canada  
Phone: 905.827.6400  
Toll Free: 855.668.8722  
Fax: 905.827.6402  
canada.inquires@bio-techne.com

### **Bio-Techne Ltd**

19 Barton Lane  
Abingdon Science Park  
Abingdon, OX14 3NB, United Kingdom  
Phone: (44) (0) 1235 529449  
Free Phone: 0800 37 34 15  
Fax: (44) (0) 1235 533420  
info.EMEA@bio-techne.com

### **General Contact Information**

[www.novusbio.com](http://www.novusbio.com)  
Technical Support: nb-technical@bio-techne.com  
Orders: nb-customerservice@bio-techne.com  
General: novus@novusbio.com

### **Products Related to NBP3-06553-100ul**

HAF007	Goat anti-Mouse IgG Secondary Antibody [HRP]
NB720-B	Rabbit anti-Mouse IgG (H+L) Secondary Antibody [Biotin]
NBP1-97005-0.5mg	Mouse IgG1 Isotype Control (MG1)
NBP1-72527-50ug	Recombinant Human PA28 Activator beta Subunit/PSME2 His Protein

### **Limitations**

This product is for research use only and is not approved for use in humans or in clinical diagnosis. Primary Antibodies are guaranteed for 1 year from date of receipt.

For more information on our 100% guarantee, please visit [www.novusbio.com/guarantee](http://www.novusbio.com/guarantee)

Earn gift cards/discounts by submitting a review: [www.novusbio.com/reviews/submit/NBP3-06553](http://www.novusbio.com/reviews/submit/NBP3-06553)

Earn gift cards/discounts by submitting a publication using this product:  
[www.novusbio.com/publications](http://www.novusbio.com/publications)

