

Product Datasheet

Lamin B1 Antibody - Azide and BSA Free NBP3-03711-100ul

Unit Size: 100 ul

Store at -20C. Avoid freeze-thaw cycles.

www.novusbio.com



technical@novusbio.com

Protocols, Publications, Related Products, Reviews, Research Tools and Images at:
www.novusbio.com/NBP3-03711

Updated 10/20/2024 v.20.1

Earn rewards for product
reviews and publications.

Submit a publication at www.novusbio.com/publications

Submit a review at www.novusbio.com/reviews/destination/NBP3-03711



NBP3-03711-100ul

Lamin B1 Antibody - Azide and BSA Free

Product Information

Unit Size	100 ul
Concentration	Please see the vial label for concentration. If unlisted please contact technical services.
Storage	Store at -20C. Avoid freeze-thaw cycles.
Clonality	Polyclonal
Preservative	0.09% Sodium Azide
Isotype	IgG
Purity	Affinity purified
Buffer	PBS (pH 7.3), 50% glycerol
Target Molecular Weight	66 kDa

Product Description

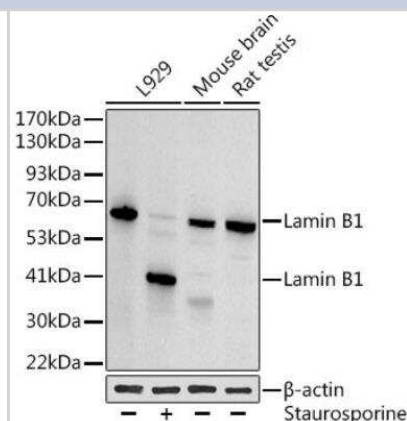
Host	Rabbit
Gene ID	4001
Gene Symbol	LMNB1
Species	Human, Mouse, Rat
Immunogen	Recombinant fusion protein containing a sequence corresponding to amino acids 397-586 of human Lamin B1 (NP_005564.1). RVTVSRASSRSVTRTRGKRKRVDVEESEASSSVSISHSASATGNVCIEEIDVD GKFIRLKNTSEQDQPMGGWEMIRKIGDTSVSYKYTSRYVLKAGQTVTIWAANA GVTASPTDLIWKNQNSWGTGEDVKVILKNSQGEEVAQRSTVFKTTIPEEEEE EEEEAGVVVEELFHQQGTPRASNRSCAIM

Product Application Details

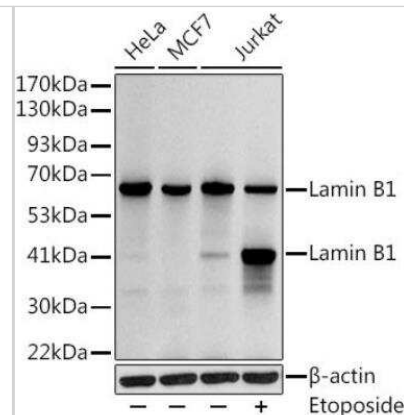
Applications	Western Blot, Immunocytochemistry/ Immunofluorescence, Immunohistochemistry, Immunohistochemistry-Paraffin, Immunoprecipitation, Chromatin Immunoprecipitation (ChIP)
Recommended Dilutions	Western Blot 1:500 - 1:1000, Immunohistochemistry 1:50 - 1:200, Immunocytochemistry/ Immunofluorescence 1:50 - 1:200, Immunoprecipitation 1:500 - 1:1000, Immunohistochemistry-Paraffin, Chromatin Immunoprecipitation (ChIP) 1:500 - 1:1000

Images

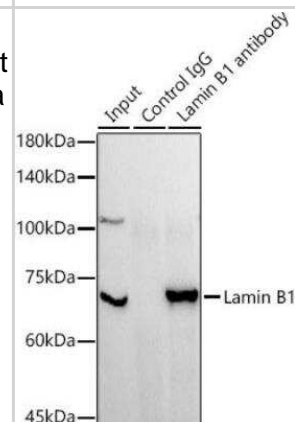
Western Blot: Lamin B1 Antibody [NBP3-03711] - Analysis of extracts of various cell lines, using Lamin B1 antibody at 1:1000 dilution. L929 cells were treated by staurosporine (1 uM) for 3 hour. Secondary antibody: HRP Goat Anti-Rabbit IgG (H+L) at 1:10000 dilution. Lysates/proteins: 25ug per lane. Blocking buffer: 3% nonfat dry milk in TBST. Detection: ECL Basic Kit. Exposure time: 30s.



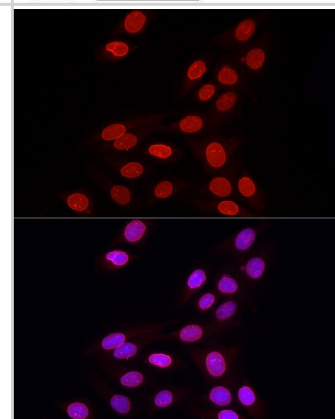
Western Blot: Lamin B1 Antibody [NBP3-03711] - Analysis of extracts of various cell lines, using Lamin B1 antibody at 1:1000 dilution. Jurkat cells were treated by Etoposide (25 μ M) at 37°C for 5 hours. Secondary antibody: HRP Goat Anti-Rabbit IgG (H+L) at 1:10000 dilution. Lysates/proteins: 25 μ g per lane. Blocking buffer: 3% nonfat dry milk in TBST. Detection: ECL Basic Kit. Exposure time: 10s.



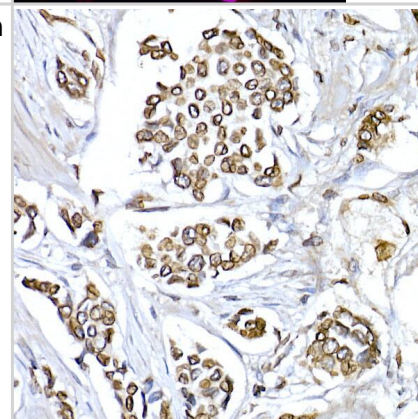
Immunoprecipitation: Lamin B1 Antibody [NBP3-03711] - Analysis of 300 μ g extracts of MCF7 cells using 3 μ g Lamin B1 antibody. Western blot was performed from the immunoprecipitate using Lamin B1 antibody at a dilution of 1:1000.



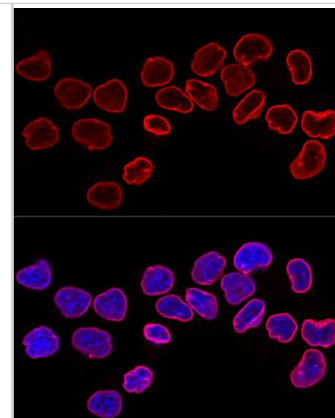
Immunocytochemistry/ Immunofluorescence: Lamin B1 Antibody - Azide and BSA Free [Lamin B1] - Immunofluorescence analysis of U2OS cells using Lamin B1 Rabbit pAb at dilution of 1:100 (40x lens). Secondary antibody: Cy3-conjugated Goat anti-Rabbit IgG (H+L) at 1:500 dilution. Blue: DAPI for nuclear staining.



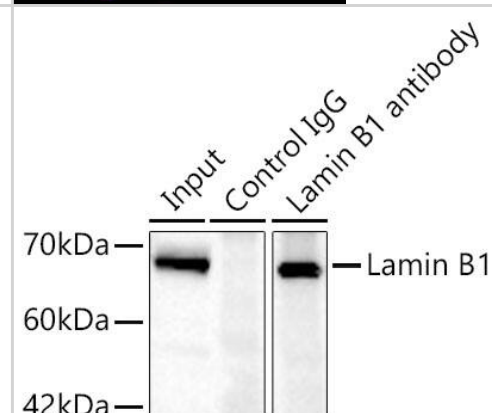
Immunohistochemistry: Lamin B1 Antibody - Azide and BSA Free [Lamin B1] - Immunohistochemistry analysis of paraffin-embedded Human breast cancer using Lamin B1 Rabbit pAb at dilution of 1:150 (40x lens). High pressure antigen retrieval performed with 0.01M Citrate Buffer (pH 6.0) prior to IHC staining.



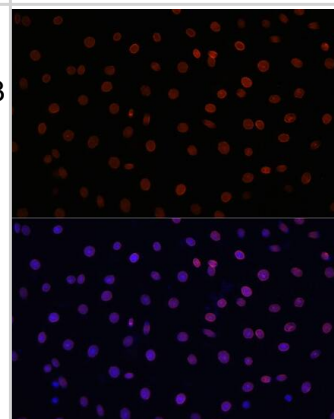
Immunocytochemistry/ Immunofluorescence: Lamin B1 Antibody - Azide and BSA Free [Lamin B1] - Confocal immunofluorescence analysis of HeLa cells using Lamin B1 Rabbit pAb at dilution of 1:200. Blue: DAPI for nuclear staining.



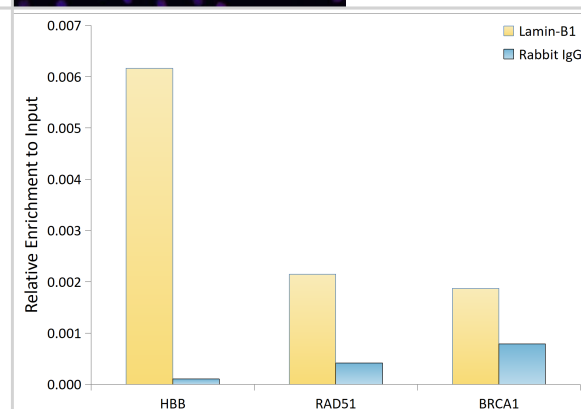
Immunoprecipitation: Lamin B1 Antibody - Azide and BSA Free [Lamin B1] - Immunoprecipitation of Lamin B1 in 300 ug extracts from Jurkat cells using 0.5 ug Lamin B1 Rabbit pAb . Western blot analysis was performed using Lamin B1 Rabbit pAb at 1:1000 dilution.



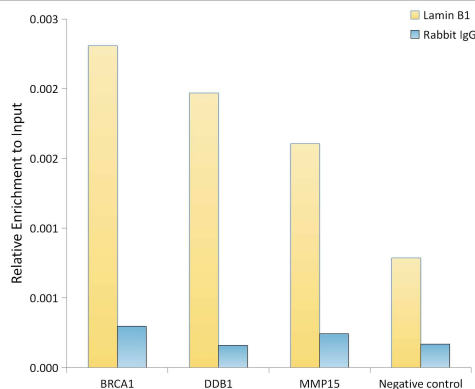
Immunocytochemistry/ Immunofluorescence: Lamin B1 Antibody - Azide and BSA Free [Lamin B1] - Immunofluorescence analysis of C6 cells using Lamin B1 Rabbit pAb at dilution of 1:100. Secondary antibody: Cy3-conjugated Goat anti-Rabbit IgG (H+L) at 1:500 dilution. Blue: DAPI for nuclear staining.



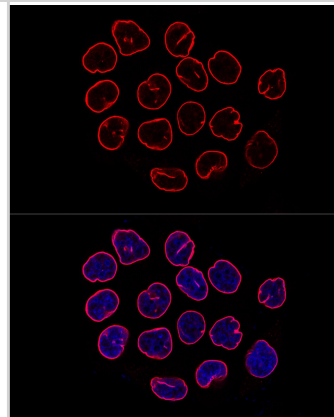
Chromatin Immunoprecipitation: Lamin B1 Antibody - Azide and BSA Free [Lamin B1] - Chromatin immunoprecipitation was performed with cross-linked chromatin from HeLa, using Lamin-B1 Rabbit mAb and rabbit IgG. The amount of immunoprecipitated DNA was checked by quantitative PCR. Histogram compares the ratio of the immunoprecipitated DNA versus the input.



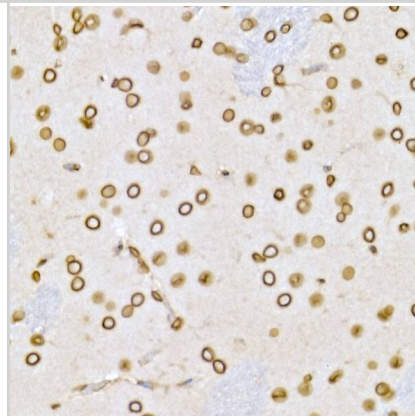
Chromatin Immunoprecipitation: Lamin B1 Antibody - Azide and BSA Free [Lamin B1] - Chromatin immunoprecipitation analysis of extracts of HeLa cells, using Lamin B1 Rabbit pAb antibody and rabbit IgG. The amount of immunoprecipitated DNA was checked by quantitative PCR. Histogram was constructed by the ratios of the immunoprecipitated DNA to the input.



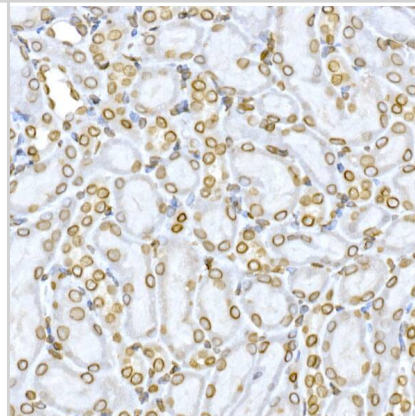
Immunocytochemistry/ Immunofluorescence: Lamin B1 Antibody - Azide and BSA Free [Lamin B1] - Confocal immunofluorescence analysis of HeLa cells using Lamin B1 Rabbit pAb at dilution of 1:200. Blue: DAPI for nuclear staining.



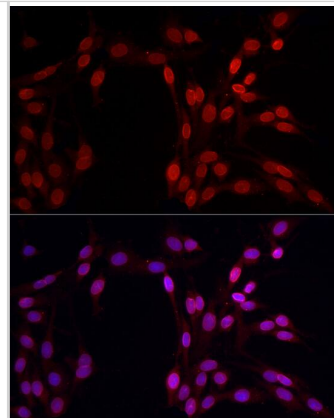
Immunohistochemistry: Lamin B1 Antibody - Azide and BSA Free [Lamin B1] - Immunohistochemistry analysis of paraffin-embedded Rat brain using Lamin B1 Rabbit pAb at dilution of 1:150 (40x lens). High pressure antigen retrieval performed with 0.01M Citrate Bufferr (pH 6.0) prior to IHC staining.



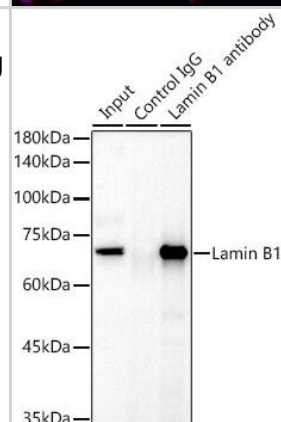
Immunohistochemistry: Lamin B1 Antibody - Azide and BSA Free [Lamin B1] - Immunohistochemistry analysis of paraffin-embedded Mouse kidney using Lamin B1 Rabbit pAb at dilution of 1:150 (40x lens). High pressure antigen retrieval performed with 0.01M Citrate Bufferr (pH 6.0) prior to IHC staining.



Immunocytochemistry/ Immunofluorescence: Lamin B1 Antibody - Azide and BSA Free [Lamin B1] - Immunofluorescence analysis of PC-12 cells using Lamin B1 Rabbit pAb at dilution of 1:100 (40x lens). Secondary antibody: Cy3-conjugated Goat anti-Rabbit IgG (H+L) at 1:500 dilution. Blue: DAPI for nuclear staining.



Immunoprecipitation: Lamin B1 Antibody - Azide and BSA Free [Lamin B1] - Immunoprecipitation analysis of 300 ug extracts of HeLa cells using 3 ug Lamin B1 antibody . Western blot was performed from the immunoprecipitate using Lamin B1 antibody at a dilution of 1:1000.



Western Blot: Lamin B1 Antibody - Azide and BSA Free [Lamin B1] - Western blot analysis of various lysates using Lamin B1 Rabbit pAb at 1:1000 dilution.

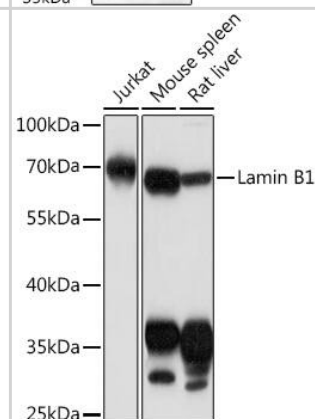
Secondary antibody: HRP-conjugated Goat anti-Rabbit IgG (H+L) at 1:10000 dilution.

Lysates/proteins: 25ug per lane.

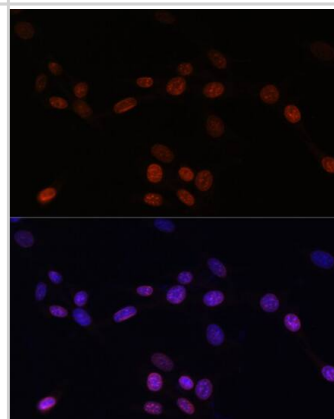
Blocking buffer: 3% nonfat dry milk in TBST.

Detection: ECL Basic Kit .

Exposure time: 1min.



Immunocytochemistry/ Immunofluorescence: Lamin B1 Antibody - Azide and BSA Free [Lamin B1] - Immunofluorescence analysis of NIH/3T3 cells using Lamin B1 Rabbit pAb at dilution of 1:100. Secondary antibody: Cy3-conjugated Goat anti-Rabbit IgG (H+L) at 1:500 dilution. Blue: DAPI for nuclear staining.





Novus Biologicals USA

10730 E. Briarwood Avenue
Centennial, CO 80112
USA
Phone: 303.730.1950
Toll Free: 1.888.506.6887
Fax: 303.730.1966
nb-customerservice@bio-techne.com

Bio-Techne Canada

21 Canmotor Ave
Toronto, ON M8Z 4E6
Canada
Phone: 905.827.6400
Toll Free: 855.668.8722
Fax: 905.827.6402
canada.inquires@bio-techne.com

Bio-Techne Ltd

19 Barton Lane
Abingdon Science Park
Abingdon, OX14 3NB, United Kingdom
Phone: (44) (0) 1235 529449
Free Phone: 0800 37 34 15
Fax: (44) (0) 1235 533420
info.EMEA@bio-techne.com

General Contact Information

www.novusbio.com
Technical Support: nb-technical@bio-techne.com
Orders: nb-customerservice@bio-techne.com
General: novus@novusbio.com

Products Related to NBP3-03711-100ul

HAF008	Goat anti-Rabbit IgG Secondary Antibody [HRP]
NB7160	Goat anti-Rabbit IgG (H+L) Secondary Antibody [HRP]
NBP2-24891	Rabbit IgG Isotype Control
H00004001-P01-10ug	Recombinant Human Lamin B1 GST (N-Term) Protein

Limitations

This product is for research use only and is not approved for use in humans or in clinical diagnosis. Primary Antibodies are guaranteed for 1 year from date of receipt.

For more information on our 100% guarantee, please visit www.novusbio.com/guarantee

Earn gift cards/discounts by submitting a review: www.novusbio.com/reviews/submit/NBP3-03711

Earn gift cards/discounts by submitting a publication using this product:
www.novusbio.com/publications

