

# Product Datasheet

## CPVL Antibody NBP2-97080-100ul

Unit Size: 100 ul

Store at 4C short term. Aliquot and store at -20C long term. Avoid freeze-thaw cycles.

[www.novusbio.com](http://www.novusbio.com)



[technical@novusbio.com](mailto:technical@novusbio.com)

Protocols, Publications, Related Products, Reviews, Research Tools and Images at:  
[www.novusbio.com/NBP2-97080](http://www.novusbio.com/NBP2-97080)

Updated 4/2/2024 v.20.1

Earn rewards for product  
reviews and publications.

Submit a publication at [www.novusbio.com/publications](http://www.novusbio.com/publications)

Submit a review at [www.novusbio.com/reviews/destination/NBP2-97080](http://www.novusbio.com/reviews/destination/NBP2-97080)



**NBP2-97080-100ul**

CPVL Antibody

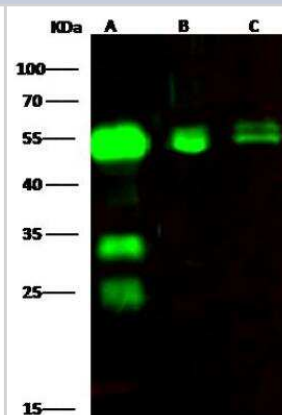
Product Information	
<b>Unit Size</b>	100 ul
<b>Concentration</b>	Please see the vial label for concentration. If unlisted please contact technical services.
<b>Storage</b>	Store at 4C short term. Aliquot and store at -20C long term. Avoid freeze-thaw cycles.
<b>Clonality</b>	Polyclonal
<b>Preservative</b>	No Preservative
<b>Isotype</b>	IgG
<b>Purity</b>	Antigen and protein A Affinity-purified
<b>Buffer</b>	0.2 um filtered solution in PBS

Product Description	
<b>Description</b>	This antibody can be stored at 2C to 8C for one month without detectable loss of activity. Antibody products are stable for twelve months from date of receipt when stored at -20C to -80C. Avoid repeated freeze-thaw cycles.
<b>Host</b>	Rabbit
<b>Gene ID</b>	54504
<b>Gene Symbol</b>	CPVL
<b>Species</b>	Human
<b>Immunogen</b>	Produced in rabbits immunized with purified, recombinant Human CPVL (Accession#: AAH16838.1; Met1-Gly476)

Product Application Details	
<b>Applications</b>	Western Blot, ELISA, Immunohistochemistry-Paraffin, Immunoprecipitation
<b>Recommended Dilutions</b>	Western Blot 1:500-1:2000, ELISA 1:5000-1:10000, Immunoprecipitation 1-4 uL/mg of lysate, Immunohistochemistry-Paraffin 1:2500-1:10000

**Images**

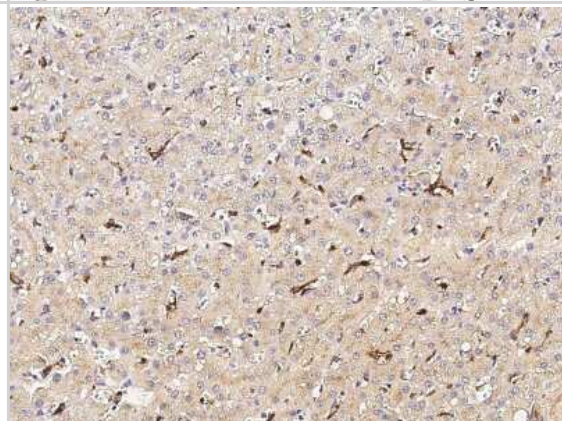
Western Blot: CPVL Antibody [NBP2-97080] - Lane A: 293 Whole Cell Lysate Lane B: HepG2 Whole Cell Lysate Lane C: Jurkat Whole Cell Lysate Lysates/proteins at 30 ug per lane. Secondary Goat Anti-Rabbit IgG H&L (Dylight800) at 1/10000 dilution. Developed using the Odyssey technique. Performed under reducing conditions. Predicted band size:54 kDa Observed band size:54 kDa (We are unsure as to the identity of these extra bands.)



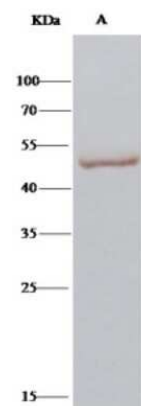
Immunohistochemistry-Paraffin: CPVL Antibody [NBP2-97080] - Staining of human CPVL in human lung with rabbit polyclonal antibody (1:10000).



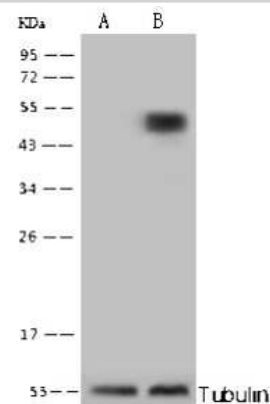
Immunohistochemistry-Paraffin: CPVL Antibody [NBP2-97080] - Staining of human CPVL in human liver with rabbit polyclonal antibody (1:10000).



Immunoprecipitation: CPVL Antibody [NBP2-97080] - CPVL was immunoprecipitated using: Lane A: 0.5 mg HepG2 Whole Cell Lysate 2 ul anti-CPVL rabbit polyclonal antibody and 15 ul of 50 % Protein G agarose. Primary antibody: Anti-CPVL rabbit polyclonal antibody, at 1:100 dilution. Secondary antibody: Clean-Bloto IP Detection Reagent (HRP) at 1:1000 dilution. Developed using the DAB staining technique. Performed under reducing conditions. Predicted band size: 54 kDa. Observed band size: 54 kDa



Knockout Validated: CPVL Antibody [NBP2-97080] - Lane A: CPVL knockout 293FT Whole Cell Lysate Lane B: 293FT Whole Cell Lysate. Lysates/proteins at 10 ug per lane. Secondary: Goat Anti-Rabbit IgG (H +L)/HRP at 1/10000 dilution. Developed using the ECL technique. Performed under reducing conditions. Predicted band size:54 kDa. Observed band size:54 kDa. (We are unsure as to the identity of these extra bands.)





### **Novus Biologicals USA**

10730 E. Briarwood Avenue  
Centennial, CO 80112  
USA  
Phone: 303.730.1950  
Toll Free: 1.888.506.6887  
Fax: 303.730.1966  
nb-customerservice@bio-techne.com

### **Bio-Techne Canada**

21 Canmotor Ave  
Toronto, ON M8Z 4E6  
Canada  
Phone: 905.827.6400  
Toll Free: 855.668.8722  
Fax: 905.827.6402  
canada.inquires@bio-techne.com

### **Bio-Techne Ltd**

19 Barton Lane  
Abingdon Science Park  
Abingdon, OX14 3NB, United Kingdom  
Phone: (44) (0) 1235 529449  
Free Phone: 0800 37 34 15  
Fax: (44) (0) 1235 533420  
info.EMEA@bio-techne.com

### **General Contact Information**

www.novusbio.com  
Technical Support: nb-technical@bio-techne.com  
Orders: nb-customerservice@bio-techne.com  
General: novus@novusbio.com

### **Limitations**

This product is for research use only and is not approved for use in humans or in clinical diagnosis. Primary Antibodies are guaranteed for 1 year from date of receipt.

For more information on our 100% guarantee, please visit [www.novusbio.com/guarantee](http://www.novusbio.com/guarantee)

Earn gift cards/discounts by submitting a review: [www.novusbio.com/reviews/submit/NBP2-97080](http://www.novusbio.com/reviews/submit/NBP2-97080)

Earn gift cards/discounts by submitting a publication using this product:  
[www.novusbio.com/publications](http://www.novusbio.com/publications)

