

# Product Datasheet

## Rabbit anti-Llama VHH Secondary Antibody [DyLight 550] NBP2-95273R

Unit Size: 100 ul

Store at 4C in the dark.

[www.novusbio.com](http://www.novusbio.com)



[technical@novusbio.com](mailto:technical@novusbio.com)

Protocols, Publications, Related Products, Reviews, Research Tools and Images at:  
[www.novusbio.com/NBP2-95273R](http://www.novusbio.com/NBP2-95273R)

Updated 8/17/2021 v.20.1

Earn rewards for product  
reviews and publications.

Submit a publication at [www.novusbio.com/publications](http://www.novusbio.com/publications)

Submit a review at [www.novusbio.com/reviews/destination/NBP2-95273R](http://www.novusbio.com/reviews/destination/NBP2-95273R)



**NBP2-95273R**

Rabbit anti-Llama VHH Secondary Antibody [DyLight 550]

**Product Information**

<b>Unit Size</b>	100 ul
<b>Concentration</b>	Please see the vial label for concentration. If unlisted please contact technical services.
<b>Storage</b>	Store at 4C in the dark.
<b>Clonality</b>	Polyclonal
<b>Preservative</b>	0.05% Sodium Azide
<b>Isotype</b>	IgG
<b>Conjugate</b>	DyLight 550
<b>Purity</b>	Sterile filtered
<b>Buffer</b>	50mM Sodium Borate

**Product Description**

<b>Host</b>	Rabbit
<b>Species</b>	Llama
<b>Reactivity Notes</b>	Some cross-reactivity to E.coli proteins may be observed.
<b>Specificity/Sensitivity</b>	This antibody is monospecific antiserum processed by delipidation and defibrination followed by sterile filtration. It detects native Llama IgG1 and native Llama IgG2.
<b>Immunogen</b>	This antibody was prepared from whole rabbit serum produced by repeated immunizations with a VHH camelid domain protein.
<b>Notes</b>	DyLight (R) is a trademark of Thermo Fisher Scientific Inc. and its subsidiaries.

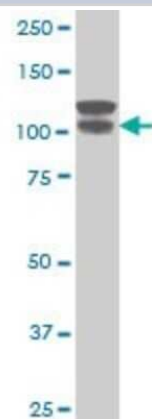
**Product Application Details**

<b>Applications</b>	Western Blot, ELISA, Immunohistochemistry
<b>Recommended Dilutions</b>	Western Blot : 1:1000-1:5000, ELISA : 1:10000-1:50000, Immunohistochemistry
<b>Application Notes</b>	Optimal dilution of this antibody should be experimentally determined.

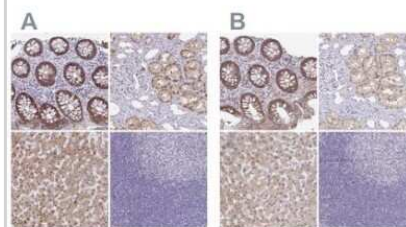


## Images

Western Blot: Rabbit anti-Llama VHH Secondary Antibody [DyLight 550] [NBP2-95273R] - Test125



Immunohistochemistry: Rabbit anti-Llama VHH Secondary Antibody [DyLight 550] [NBP2-95273R] - Test125





### **Novus Biologicals USA**

10730 E. Briarwood Avenue  
Centennial, CO 80112  
USA  
Phone: 303.730.1950  
Toll Free: 1.888.506.6887  
Fax: 303.730.1966  
nb-customerservice@bio-techne.com

### **Bio-Techne Canada**

21 Canmotor Ave  
Toronto, ON M8Z 4E6  
Canada  
Phone: 905.827.6400  
Toll Free: 855.668.8722  
Fax: 905.827.6402  
canada.inquires@bio-techne.com

### **Bio-Techne Ltd**

19 Barton Lane  
Abingdon Science Park  
Abingdon, OX14 3NB, United Kingdom  
Phone: (44) (0) 1235 529449  
Free Phone: 0800 37 34 15  
Fax: (44) (0) 1235 533420  
info.EMEA@bio-techne.com

### **General Contact Information**

www.novusbio.com  
Technical Support: nb-technical@bio-  
techne.com  
Orders: nb-customerservice@bio-techne.com  
General: novus@novusbio.com

### **Limitations**

This product is for research use only and is not approved for use in humans or in clinical diagnosis. Secondary Antibodies are guaranteed for 1 year from date of receipt.

For more information on our 100% guarantee, please visit [www.novusbio.com/guarantee](http://www.novusbio.com/guarantee)

Earn gift cards/discounts by submitting a review: [www.novusbio.com/reviews/submit/NBP2-95273R](http://www.novusbio.com/reviews/submit/NBP2-95273R)

Earn gift cards/discounts by submitting a publication using this product:  
[www.novusbio.com/publications](http://www.novusbio.com/publications)

