

Product Datasheet

Rabbit anti-Llama VHH Secondary Antibody [PE] NBP2-95273PE

Unit Size: 100 ul

Store at 4C in the dark.

www.novusbio.com



technical@novusbio.com

Protocols, Publications, Related Products, Reviews, Research Tools and Images at:
www.novusbio.com/NBP2-95273PE

Updated 8/17/2021 v.20.1

Earn rewards for product
reviews and publications.

Submit a publication at www.novusbio.com/publications

Submit a review at www.novusbio.com/reviews/destination/NBP2-95273PE



NBP2-95273PE

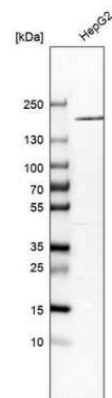
Rabbit anti-Llama VHH Secondary Antibody [PE]

Product Information	
Unit Size	100 ul
Concentration	Please see the vial label for concentration. If unlisted please contact technical services.
Storage	Store at 4C in the dark.
Clonality	Polyclonal
Preservative	0.05% Sodium Azide
Isotype	IgG
Conjugate	PE
Purity	Sterile filtered
Buffer	PBS
Product Description	
Host	Rabbit
Species	Llama
Reactivity Notes	Some cross-reactivity to E.coli proteins may be observed.
Specificity/Sensitivity	This antibody is monospecific antiserum processed by delipidation and defibrination followed by sterile filtration. It detects native Llama IgG1 and native Llama IgG2.
Immunogen	This antibody was prepared from whole rabbit serum produced by repeated immunizations with a VHH camelid domain protein.
Product Application Details	
Applications	Western Blot, ELISA
Recommended Dilutions	Western Blot : 1:1000-1:5000, ELISA : 1:10000-1:50000
Application Notes	Optimal dilution of this antibody should be experimentally determined.

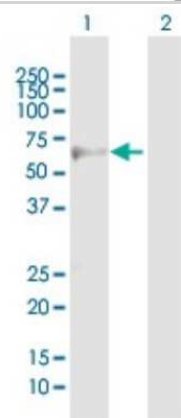


Images

Western Blot: Rabbit anti-Llama VHH Secondary Antibody [PE] [NBP2-95273PE] - Test126



Western Blot: Rabbit anti-Llama VHH Secondary Antibody [PE] [NBP2-95273PE] - Test126





Novus Biologicals USA

10730 E. Briarwood Avenue
Centennial, CO 80112
USA
Phone: 303.730.1950
Toll Free: 1.888.506.6887
Fax: 303.730.1966
nb-customerservice@bio-techne.com

Bio-Techne Canada

21 Canmotor Ave
Toronto, ON M8Z 4E6
Canada
Phone: 905.827.6400
Toll Free: 855.668.8722
Fax: 905.827.6402
canada.inquires@bio-techne.com

Bio-Techne Ltd

19 Barton Lane
Abingdon Science Park
Abingdon, OX14 3NB, United Kingdom
Phone: (44) (0) 1235 529449
Free Phone: 0800 37 34 15
Fax: (44) (0) 1235 533420
info.EMEA@bio-techne.com

General Contact Information

www.novusbio.com
Technical Support: nb-technical@bio-techne.com
Orders: nb-customerservice@bio-techne.com
General: novus@novusbio.com

Limitations

This product is for research use only and is not approved for use in humans or in clinical diagnosis. Secondary Antibodies are guaranteed for 1 year from date of receipt.

For more information on our 100% guarantee, please visit www.novusbio.com/guarantee

Earn gift cards/discounts by submitting a review: www.novusbio.com/reviews/submit/NBP2-95273PE

Earn gift cards/discounts by submitting a publication using this product:
www.novusbio.com/publications

