

# Product Datasheet

## SLC34A1 Antibody NBP2-94576-0.1ml

Unit Size: 0.1 ml

Store at -20C. Avoid freeze-thaw cycles.

[www.novusbio.com](http://www.novusbio.com)



[technical@novusbio.com](mailto:technical@novusbio.com)

Protocols, Publications, Related Products, Reviews, Research Tools and Images at:  
[www.novusbio.com/NBP2-94576](http://www.novusbio.com/NBP2-94576)

Updated 12/28/2022 v.20.1

Earn rewards for product  
reviews and publications.

Submit a publication at [www.novusbio.com/publications](http://www.novusbio.com/publications)

Submit a review at [www.novusbio.com/reviews/destination/NBP2-94576](http://www.novusbio.com/reviews/destination/NBP2-94576)



**NBP2-94576-0.1ml**

SLC34A1 Antibody

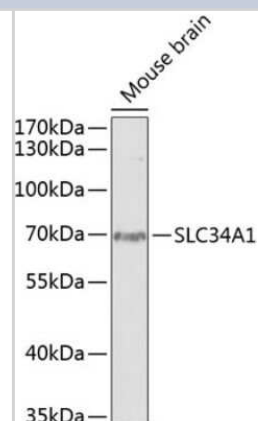
| Product Information |   |
|---------------------|---|
| Unit Size           | 0.1 ml  |
| Concentration       | Please see the vial label for concentration. If unlisted please contact technical services. |
| Storage             | Store at -20C. Avoid freeze-thaw cycles.  |
| Clonality           | Polyclonal  |
| Preservative        | 0.02% Sodium Azide  |
| Isotype             | IgG   |
| Purity              | Affinity purified   |
| Buffer              | PBS (pH 7.3), 50% glycerol  |

| Product Description |   |
|---------------------|---|
| Host                | Rabbit  |
| Gene ID             | 6569  |
| Gene Symbol         | SLC34A1   |
| Species             | Human, Mouse, Rat   |
| Immunogen           | Recombinant fusion protein containing a sequence corresponding to amino acids 1-103 of human SLC34A1 (NP_003043.3). |

| Product Application Details |                             |
|-----------------------------|-----------------------------|
| Applications                | Western Blot                |
| Recommended Dilutions       | Western Blot 1:500 - 1:2000 |

**Images**

Western Blot: SLC34A1 Antibody [NBP2-94576] - Analysis of extracts of mouse brain, using SLC34A1 at 1:1000 dilution. Secondary antibody: HRP Goat Anti-Rabbit IgG (H+L) at 1:10000 dilution. Lysates/proteins: 25ug per lane. Blocking buffer: 3% nonfat dry milk in TBST. Detection: ECL Basic Kit .Exposure tim





### **Novus Biologicals USA**

10730 E. Briarwood Avenue  
Centennial, CO 80112  
USA  
Phone: 303.730.1950  
Toll Free: 1.888.506.6887  
Fax: 303.730.1966  
nb-customerservice@bio-techne.com

### **Bio-Techne Canada**

21 Canmotor Ave  
Toronto, ON M8Z 4E6  
Canada  
Phone: 905.827.6400  
Toll Free: 855.668.8722  
Fax: 905.827.6402  
canada.inquires@bio-techne.com

### **Bio-Techne Ltd**

19 Barton Lane  
Abingdon Science Park  
Abingdon, OX14 3NB, United Kingdom  
Phone: (44) (0) 1235 529449  
Free Phone: 0800 37 34 15  
Fax: (44) (0) 1235 533420  
info.EMEA@bio-techne.com

### **General Contact Information**

www.novusbio.com  
Technical Support: nb-technical@bio-  
techne.com  
Orders: nb-customerservice@bio-techne.com  
General: novus@novusbio.com

### **Limitations**

This product is for research use only and is not approved for use in humans or in clinical diagnosis. Primary Antibodies are guaranteed for 1 year from date of receipt.

For more information on our 100% guarantee, please visit [www.novusbio.com/guarantee](http://www.novusbio.com/guarantee)

Earn gift cards/discounts by submitting a review: [www.novusbio.com/reviews/submit/NBP2-94576](http://www.novusbio.com/reviews/submit/NBP2-94576)

Earn gift cards/discounts by submitting a publication using this product:  
[www.novusbio.com/publications](http://www.novusbio.com/publications)

