

# Product Datasheet

## Cysteinyl Leukotriene R1/CysLTR1 Antibody - Azide and BSA Free NBP2-92396-0.1ml

Unit Size: 0.1 ml

Store at -20C. Avoid freeze-thaw cycles.

[www.novusbio.com](http://www.novusbio.com)



[technical@novusbio.com](mailto:technical@novusbio.com)

### Publications: 3

Protocols, Publications, Related Products, Reviews, Research Tools and Images at:  
[www.novusbio.com/NBP2-92396](http://www.novusbio.com/NBP2-92396)

Updated 9/9/2025 v.20.1

Earn rewards for product reviews and publications.

Submit a publication at [www.novusbio.com/publications](http://www.novusbio.com/publications)

Submit a review at [www.novusbio.com/reviews/destination/NBP2-92396](http://www.novusbio.com/reviews/destination/NBP2-92396)



**NBP2-92396-0.1ml**

Cysteinyl Leukotriene R1/CysLTR1 Antibody - Azide and BSA Free

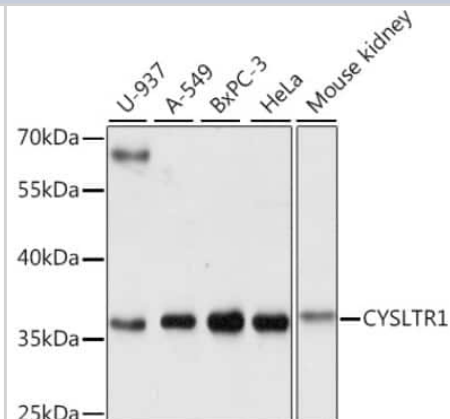
Product Information	
Unit Size	0.1 ml
Concentration	Please see the vial label for concentration. If unlisted please contact technical services.
Storage	Store at -20C. Avoid freeze-thaw cycles.
Clonality	Polyclonal
Preservative	0.01% Thimerosal
Isotype	IgG
Purity	Affinity purified
Buffer	PBS (pH 7.3), 50% glycerol
Target Molecular Weight	39 kDa

Product Description	
Description	Novus Biologicals Rabbit Cysteinyl Leukotriene R1/CysLTR1 Antibody - Azide and BSA Free (NBP2-92396) is a polyclonal antibody validated for use in WB and ELISA. Anti-Cysteinyl Leukotriene R1/CysLTR1 Antibody: Cited in 3 publications. All Novus Biologicals antibodies are covered by our 100% guarantee.
Host	Rabbit
Gene ID	10800
Gene Symbol	CYSLTR1
Species	Human, Mouse
Immunogen	A synthetic peptide corresponding to a sequence within amino acids 1-100 of human CYSLTR1 (NP_006630.1). MDETGNLTVSSATCHDTIDDFRNQVYSTLYSMISVVGGFFGNGFVLYVLIKTYHK KSAFQVYMINLAVADLLCVCTPLRVVYYVHKGIWLFGDFLCRLST

Product Application Details	
Applications	Western Blot, ELISA
Recommended Dilutions	Western Blot 1:500-1:2000, ELISA

**Images**

Western Blot: Cysteinyl Leukotriene R1/CysLTR1 Antibody [NBP2-92396] - Analysis of extracts of various cell lines, using Cysteinyl Leukotriene R1/CysLTR1 at 1:1000 dilution. Secondary antibody: HRP Goat Anti-Rabbit IgG (H+L) at 1:10000 dilution. Lysates/proteins: 25ug per lane. Blocking buffer: 3% nonfat dry milk in TBST. Detection: ECL Basic Kit. Exposure time: 3s.



## Publications

Satapathy SR, Ghatak S, Sjölander A The tumor promoter cysteinyl leukotriene receptor 1 regulates PD-L1 expression in colon cancer cells via the Wnt/ $\beta$ -catenin signaling axis Cell communication and signaling : CCS 2023-06-14 [PMID: 37316937] (WB, Human)

Ghatak S, Satapathy SR, Sjölander A DNA Methylation and Gene Expression of the Cysteinyl Leukotriene Receptors as a Prognostic and Metastatic Factor for Colorectal Cancer Patients International journal of molecular sciences 2023-02-08 [PMID: 36834820] (WB, Mouse)

Mehrabi SF, Ghatak S, Mehdawi LM Et al. Brain-Derived Neurotrophic Factor, Neutrophils and Cysteinyl Leukotriene Receptor 1 as Potential Prognostic Biomarkers for Patients with Colon Cancer Cancers Nov 3 2021 12:00AM [PMID: 34771682] (WB, Mouse)



**Novus Biologicals USA**

10730 E. Briarwood Avenue  
Centennial, CO 80112  
USA  
Phone: 303.730.1950  
Toll Free: 1.888.506.6887  
Fax: 303.730.1966  
nb-customerservice@bio-techne.com

**Bio-Techne Canada**

21 Canmotor Ave  
Toronto, ON M8Z 4E6  
Canada  
Phone: 905.827.6400  
Toll Free: 855.668.8722  
Fax: 905.827.6402  
canada.inquires@bio-techne.com

**Bio-Techne Ltd**

19 Barton Lane  
Abingdon Science Park  
Abingdon, OX14 3NB, United Kingdom  
Phone: (44) (0) 1235 529449  
Free Phone: 0800 37 34 15  
Fax: (44) (0) 1235 533420  
info.EMEA@bio-techne.com

**General Contact Information**

www.novusbio.com  
Technical Support: nb-technical@bio-techne.com  
Orders: nb-customerservice@bio-techne.com  
General: novus@novusbio.com

**Products Related to NBP2-92396-0.1ml**

---

HAF008	Goat anti-Rabbit IgG Secondary Antibody [HRP]
NB7160	Goat anti-Rabbit IgG (H+L) Secondary Antibody [HRP]
NBP2-24891	Rabbit IgG Isotype Control
NBP1-85356PEP	Cysteinyl Leukotriene R1/CysLTR1 Recombinant Protein Antigen

---

**Limitations**

This product is for research use only and is not approved for use in humans or in clinical diagnosis. Primary Antibodies are guaranteed for 1 year from date of receipt.

For more information on our 100% guarantee, please visit [www.novusbio.com/guarantee](http://www.novusbio.com/guarantee)

Earn gift cards/discounts by submitting a review: [www.novusbio.com/reviews/submit/NBP2-92396](http://www.novusbio.com/reviews/submit/NBP2-92396)

Earn gift cards/discounts by submitting a publication using this product:  
[www.novusbio.com/publications](http://www.novusbio.com/publications)

