

# Product Datasheet

## Common gamma Chain/IL-2 R gamma Antibody (011) [mFluor Violet 500 SE] **NBP2-90408MFV500**

Unit Size: 0.1 ml

Store at 4C in the dark.

[www.novusbio.com](http://www.novusbio.com)



[technical@novusbio.com](mailto:technical@novusbio.com)

Protocols, Publications, Related Products, Reviews, Research Tools and Images at:  
[www.novusbio.com/NBP2-90408MFV500](http://www.novusbio.com/NBP2-90408MFV500)

Updated 7/11/2023 v.20.1

Earn rewards for product  
reviews and publications.

Submit a publication at [www.novusbio.com/publications](http://www.novusbio.com/publications)

Submit a review at [www.novusbio.com/reviews/destination/NBP2-90408MFV500](http://www.novusbio.com/reviews/destination/NBP2-90408MFV500)



**NBP2-90408MFV500**

Common gamma Chain/IL-2 R gamma Antibody (011) [mFluor Violet 500 SE]

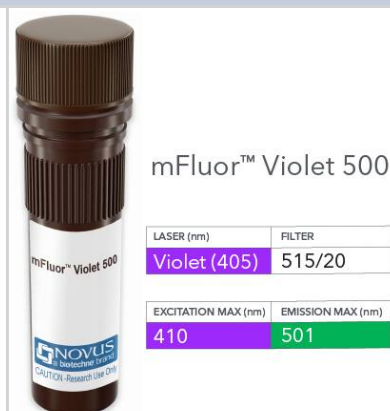
Product Information	
Unit Size	0.1 ml
Concentration	Please see the vial label for concentration. If unlisted please contact technical services.
Storage	Store at 4C in the dark.
Clonality	Monoclonal
Clone	011
Preservative	0.05% Sodium Azide
Isotype	IgG
Conjugate	mFluor Violet 500 SE
Purity	Protein A purified
Buffer	50mM Sodium Borate

Product Description	
Host	Rabbit
Gene ID	3561
Gene Symbol	IL2RG
Species	Mouse
Immunogen	This antibody was obtained from a rabbit immunized with purified, recombinant Mouse Common gamma Chain/IL-2 R gamma (Accession#: NP_038591.1; Met1-Ala263).
Notes	mFluor(TM) is a trademark of AAT Bioquest, Inc. This conjugate is made on demand. Actual recovery may vary from the stated volume of this product. The volume will be greater than or equal to the unit size stated on the datasheet.

Product Application Details	
Applications	Flow Cytometry, Immunocytochemistry/Immunofluorescence, Sandwich ELISA Capture
Recommended Dilutions	Flow Cytometry, Immunocytochemistry/Immunofluorescence, Sandwich ELISA Capture
Application Notes	Optimal dilution of this antibody should be experimentally determined.

**Images**

Common gamma Chain/IL-2 R gamma Antibody (011) [mFluor Violet 500 SE] - Vial of mFluor Violet 500 conjugated antibody. mFluor Violet 500 is optimally excited at 410 nm by the Violet laser (405 nm) and has an emission maximum of 501 nm.





### **Novus Biologicals USA**

10730 E. Briarwood Avenue  
Centennial, CO 80112  
USA  
Phone: 303.730.1950  
Toll Free: 1.888.506.6887  
Fax: 303.730.1966  
nb-customerservice@bio-techne.com

### **Bio-Techne Canada**

21 Canmotor Ave  
Toronto, ON M8Z 4E6  
Canada  
Phone: 905.827.6400  
Toll Free: 855.668.8722  
Fax: 905.827.6402  
canada.inquires@bio-techne.com

### **Bio-Techne Ltd**

19 Barton Lane  
Abingdon Science Park  
Abingdon, OX14 3NB, United Kingdom  
Phone: (44) (0) 1235 529449  
Free Phone: 0800 37 34 15  
Fax: (44) (0) 1235 533420  
info.EMEA@bio-techne.com

### **General Contact Information**

www.novusbio.com  
Technical Support: nb-technical@bio-techne.com  
Orders: nb-customerservice@bio-techne.com  
General: novus@novusbio.com

### **Products Related to NBP2-90408MFV500**

---

6507-IL-010/CF	IL-4 [Unconjugated]
384-RG-050	Common gamma Chain/IL-2 R gamma [Unconjugated]
202-IL-010	IL-2 [Unconjugated]
247-ILB-005/CF	IL-15 [Unconjugated]

---

### **Limitations**

This product is for research use only and is not approved for use in humans or in clinical diagnosis. Primary Antibodies are guaranteed for 1 year from date of receipt.

For more information on our 100% guarantee, please visit [www.novusbio.com/guarantee](http://www.novusbio.com/guarantee)

Earn gift cards/discounts by submitting a review: [www.novusbio.com/reviews/submit/NBP2-90408MFV500](http://www.novusbio.com/reviews/submit/NBP2-90408MFV500)

Earn gift cards/discounts by submitting a publication using this product:  
[www.novusbio.com/publications](http://www.novusbio.com/publications)

