

# Product Datasheet

## IGF-I R/IGF1R Antibody (012) - Azide and BSA Free NBP2-89306-100ul

Unit Size: 100 ul

Store at 4C short term. Aliquot and store at -20C long term. Avoid freeze-thaw cycles.

[www.novusbio.com](http://www.novusbio.com)



[technical@novusbio.com](mailto:technical@novusbio.com)

Protocols, Publications, Related Products, Reviews, Research Tools and Images at:  
[www.novusbio.com/NBP2-89306](http://www.novusbio.com/NBP2-89306)

Updated 2/26/2025 v.20.1

Earn rewards for product  
reviews and publications.

Submit a publication at [www.novusbio.com/publications](http://www.novusbio.com/publications)

Submit a review at [www.novusbio.com/reviews/destination/NBP2-89306](http://www.novusbio.com/reviews/destination/NBP2-89306)



**NBP2-89306-100ul**

IGF-I R/IGF1R Antibody (012) - Azide and BSA Free

| Product Information |   |
|---------------------|---|
| Unit Size           | 100 ul  |
| Concentration       | Please see the vial label for concentration. If unlisted please contact technical services. |
| Storage             | Store at 4C short term. Aliquot and store at -20C long term. Avoid freeze-thaw cycles.      |
| Clonality           | Monoclonal  |
| Clone               | 012   |
| Preservative        | No Preservative   |
| Isotype             | IgG   |
| Purity              | Protein A purified  |
| Buffer              | 0.2 um filtered solution in PBS   |

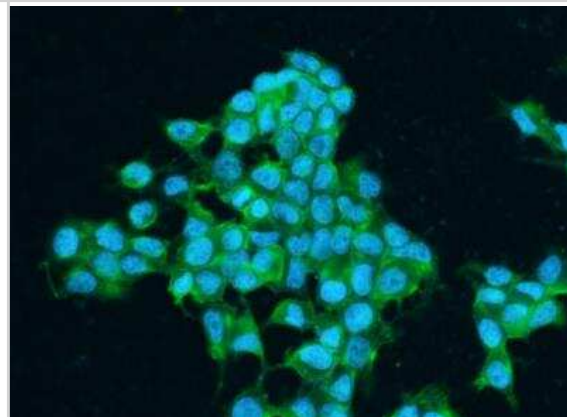
| Product Description |   |
|---------------------|---|
| Description         | This antibody can be stored at 2C-8C for one month without detectable loss of activity. Antibody products are stable for twelve months from date of receipt when stored at -20C to -80C. Avoid repeated freeze-thaw cycles. |
| Host                | Rabbit  |
| Gene ID             | 3480  |
| Gene Symbol         | IGF1R   |
| Species             | Human   |
| Immunogen           | This antibody was obtained from a rabbit immunized with purified, recombinant Human IGF-I R/IGF1R (Accession#: NP_000866.1; Met1-Asn932).   |

| Product Application Details |   |
|-----------------------------|---|
| Applications                | Flow Cytometry, Immunocytochemistry/ Immunofluorescence                       |
| Recommended Dilutions       | Flow Cytometry 1:25-1:100, Immunocytochemistry/ Immunofluorescence 1:20-1:100 |

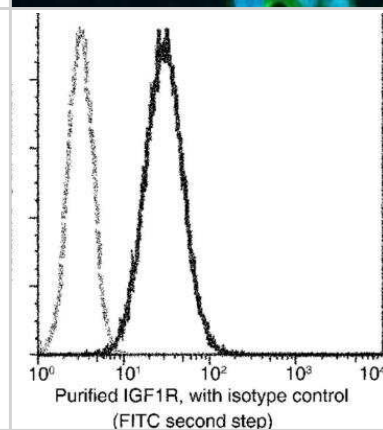


## Images

Immunocytochemistry/Immunofluorescence: IGF-I R/IGF1R Antibody (012) [NBP2-89306] - Staining of Human IGF1R in MCF7 cells. Cells were fixed with 4% PFA, blocked with 10% serum, and incubated with Rabbit anti-Human IGF1R monoclonal antibody (1:60) at 37c 1 hour. Then cells were stained with the Alexa Fluor (R) 488-conjugated Goat Anti-rabbit IgG secondary antibody (green). Positive staining was localized to cell membrane.



Flow Cytometry: IGF-I R/IGF1R Antibody (012) [NBP2-89306] - Analysis of human IGF1R expression on HeLa cells. Cells were stained with purified anti-Human IGF1R, then a FITC-conjugated second step antibody. The histogram were derived from events with the forward and side light-scatter characteristics of intact cells.





### **Novus Biologicals USA**

10730 E. Briarwood Avenue  
Centennial, CO 80112  
USA  
Phone: 303.730.1950  
Toll Free: 1.888.506.6887  
Fax: 303.730.1966  
nb-customerservice@bio-techne.com

### **Bio-Techne Canada**

21 Canmotor Ave  
Toronto, ON M8Z 4E6  
Canada  
Phone: 905.827.6400  
Toll Free: 855.668.8722  
Fax: 905.827.6402  
canada.inquires@bio-techne.com

### **Bio-Techne Ltd**

19 Barton Lane  
Abingdon Science Park  
Abingdon, OX14 3NB, United Kingdom  
Phone: (44) (0) 1235 529449  
Free Phone: 0800 37 34 15  
Fax: (44) (0) 1235 533420  
info.EMEA@bio-techne.com

### **General Contact Information**

www.novusbio.com  
Technical Support: nb-technical@bio-techne.com  
Orders: nb-customerservice@bio-techne.com  
General: novus@novusbio.com

### **Products Related to NBP2-89306-100ul**

---

|               |   |
|---------------|---|
| HAF008        | Goat anti-Rabbit IgG Secondary Antibody [HRP]       |
| NB7160        | Goat anti-Rabbit IgG (H+L) Secondary Antibody [HRP] |
| NBP2-24891    | Rabbit IgG Isotype Control                          |
| NBP1-77680PEP | IGF-I R/IGF1R Antibody Blocking Peptide             |

---

### **Limitations**

This product is for research use only and is not approved for use in humans or in clinical diagnosis. Primary Antibodies are guaranteed for 1 year from date of receipt.

For more information on our 100% guarantee, please visit [www.novusbio.com/guarantee](http://www.novusbio.com/guarantee)

Earn gift cards/discounts by submitting a review: [www.novusbio.com/reviews/submit/NBP2-89306](http://www.novusbio.com/reviews/submit/NBP2-89306)

Earn gift cards/discounts by submitting a publication using this product:  
[www.novusbio.com/publications](http://www.novusbio.com/publications)

