

Product Datasheet

LOX-1/OLR1 Antibody NBP2-89136

Unit Size: 100 ul

Store at 4C short term. Aliquot and store at -20C long term. Avoid freeze-thaw cycles.

www.novusbio.com



technical@novusbio.com

Protocols, Publications, Related Products, Reviews, Research Tools and Images at:
www.novusbio.com/NBP2-89136

Updated 5/28/2024 v.20.1

Earn rewards for product
reviews and publications.

Submit a publication at www.novusbio.com/publications

Submit a review at www.novusbio.com/reviews/destination/NBP2-89136



NBP2-89136**LOX-1/OLR1 Antibody****Product Information**

Unit Size	100 ul
Concentration	1 mg/ml
Storage	Store at 4C short term. Aliquot and store at -20C long term. Avoid freeze-thaw cycles.
Clonality	Polyclonal
Preservative	0.05% Sodium Azide
Isotype	IgG
Purity	Immunogen affinity purified
Buffer	PBS (pH7.4), 0.2% BSA, 50% Glycerol
Target Molecular Weight	31 kDa

Product Description

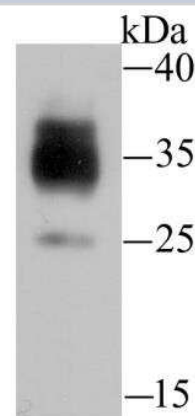
Host	Rabbit
Gene ID	4973
Gene Symbol	OLR1
Species	Human, Mouse
Immunogen	Recombinant protein within Human LOX-1/OLR1 aa 17-273 / 273. (SwissProt: P78380 Human; SwissProt: Q9EQ09 Mouse)

Product Application Details

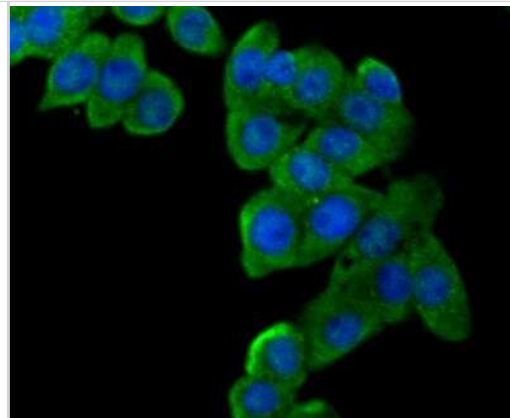
Applications	Western Blot, Flow Cytometry, Immunocytochemistry/ Immunofluorescence, Immunohistochemistry, Immunohistochemistry-Paraffin
Recommended Dilutions	Western Blot 1:500-1:1000, Flow Cytometry 1:50-1:100, Immunohistochemistry, Immunocytochemistry/ Immunofluorescence 1:50-1:200, Immunohistochemistry-Paraffin 1:50-1:200

Images

Western Blot: LOX-1/OLR1 Antibody [NBP2-89136] - Analysis of LOX1 on siHa cell lysate using anti-LOX1 antibody at 1/100 dilution.



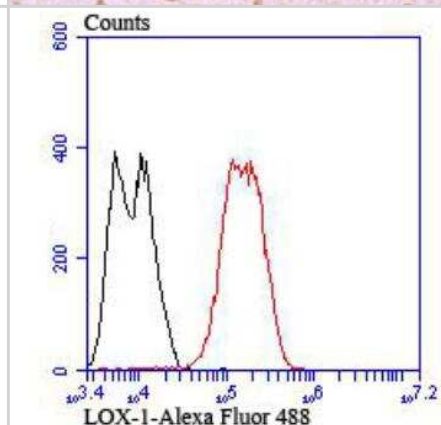
Immunocytochemistry/Immunofluorescence: LOX-1/OLR1 Antibody [NBP2-89136] - Staining LOX1 in LOVO cells (green). The nuclear counter stain is DAPI (blue). Cells were fixed in paraformaldehyde, permeabilised with 0.25% Triton X100/PBS.



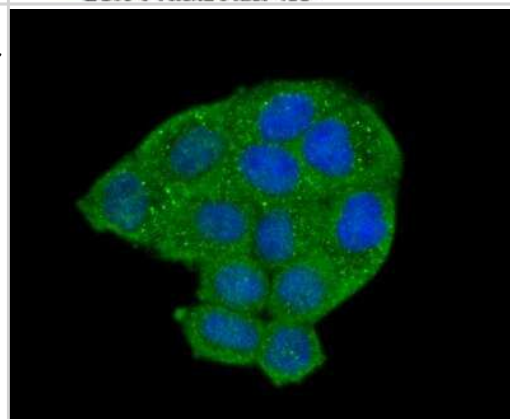
Immunohistochemistry-Paraffin: LOX-1/OLR1 Antibody [NBP2-89136] - Analysis of mouse brain tissue using anti-LOX-1/OLR1 antibody. Counter stained with hematoxylin.



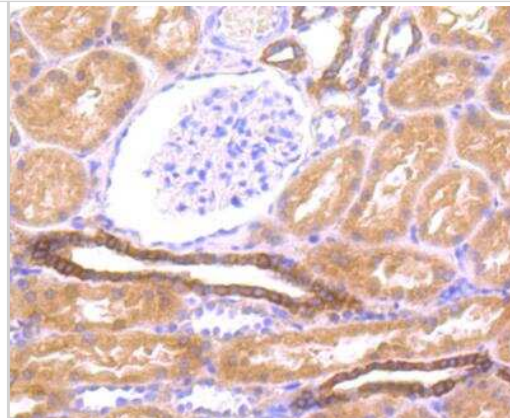
Flow Cytometry: LOX-1/OLR1 Antibody [NBP2-89136] - Analysis of LOVO cells with LOX1 antibody at 1/100 dilution (red) compared with an unlabelled control (cells without incubation with primary antibody; black). Alexa Fluor 488-conjugated goat anti rabbit IgG was used as the secondary antibody.



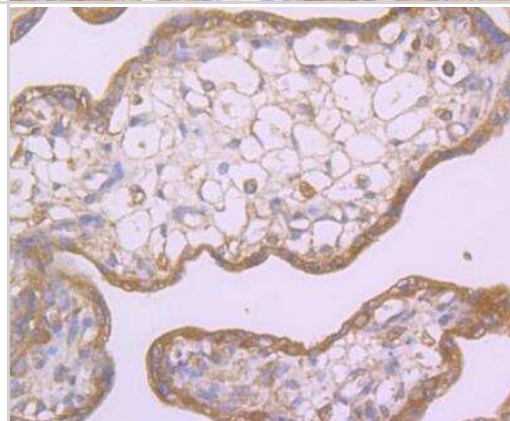
Immunocytochemistry/Immunofluorescence: LOX-1/OLR1 Antibody [NBP2-89136] - Staining LOX1 in Hela cells (green). The nuclear counter stain is DAPI (blue). Cells were fixed in paraformaldehyde, permeabilised with 0.25% Triton X100/PBS.



Immunohistochemistry-Paraffin: LOX-1/OLR1 Antibody [NBP2-89136] - Analysis of human kidney tissue using anti-LOX1 antibody. Counter stained with hematoxylin.



Immunohistochemistry-Paraffin: LOX-1/OLR1 Antibody [NBP2-89136] - Analysis of human placenta tissue using anti-LOX1 antibody. Counter stained with hematoxylin.





Novus Biologicals USA

10730 E. Briarwood Avenue
Centennial, CO 80112
USA
Phone: 303.730.1950
Toll Free: 1.888.506.6887
Fax: 303.730.1966
nb-customerservice@bio-techne.com

Bio-Techne Canada

21 Canmotor Ave
Toronto, ON M8Z 4E6
Canada
Phone: 905.827.6400
Toll Free: 855.668.8722
Fax: 905.827.6402
canada.inquires@bio-techne.com

Bio-Techne Ltd

19 Barton Lane
Abingdon Science Park
Abingdon, OX14 3NB, United Kingdom
Phone: (44) (0) 1235 529449
Free Phone: 0800 37 34 15
Fax: (44) (0) 1235 533420
info.EMEA@bio-techne.com

General Contact Information

www.novusbio.com
Technical Support: nb-technical@bio-techne.com
Orders: nb-customerservice@bio-techne.com
General: novus@novusbio.com

Limitations

This product is for research use only and is not approved for use in humans or in clinical diagnosis. Primary Antibodies are guaranteed for 1 year from date of receipt.

For more information on our 100% guarantee, please visit www.novusbio.com/guarantee

Earn gift cards/discounts by submitting a review: www.novusbio.com/reviews/submit/NBP2-89136

Earn gift cards/discounts by submitting a publication using this product:
www.novusbio.com/publications

