

Product Datasheet

LRP2BP Antibody NBP2-87741

Unit Size: 100 ul

Store at 4C short term. Aliquot and store at -20C long term. Avoid freeze-thaw cycles.

www.novusbio.com



technical@novusbio.com

Protocols, Publications, Related Products, Reviews, Research Tools and Images at:
www.novusbio.com/NBP2-87741

Updated 12/16/2024 v.20.1

Earn rewards for product
reviews and publications.

Submit a publication at www.novusbio.com/publications

Submit a review at www.novusbio.com/reviews/destination/NBP2-87741



NBP2-87741

LRP2BP Antibody

Product Information	
Unit Size	100 ul
Concentration	0.5 mg/ml
Storage	Store at 4C short term. Aliquot and store at -20C long term. Avoid freeze-thaw cycles.
Clonality	Polyclonal
Preservative	0.09% Sodium Azide
Purity	Affinity purified
Buffer	PBS, 2% Sucrose
Product Description	
Host	Rabbit
Gene ID	55805
Gene Symbol	LRP2BP
Species	Human, Rat
Immunogen	The immunogen is a synthetic peptide directed towards the middle region of human LRP2BP. Peptide sequence: CGNGNLESQGALGLMYLYGQGIRQDTDAALHCLREAAERGNVYAQGILVE The peptide sequence for this immunogen was taken from within the described region.
Product Application Details	
Applications	Western Blot, Immunohistochemistry, Immunohistochemistry-Paraffin
Recommended Dilutions	Western Blot 1.0 ug/ml, Immunohistochemistry, Immunohistochemistry-Paraffin



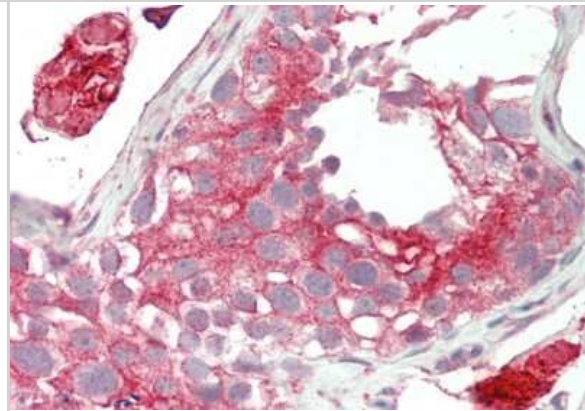
Images

Western Blot: LRP2BP Antibody [NBP2-87741] - WB Suggested Anti-Lrp2bp Antibody. Titration: 1.0 ug/ml. Positive Control: Rat Lung

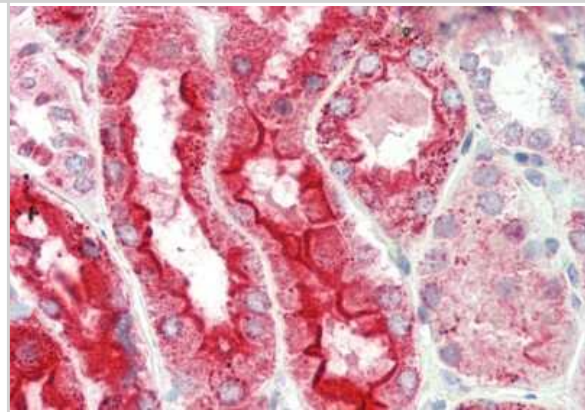


90 kDa
65 kDa
40 kDa
29 kDa
22 kDa

Immunohistochemistry-Paraffin: LRP2BP Antibody [NBP2-87741] - Rabbit Anti-Lrp2bp antibody. Formalin Fixed Paraffin Embedded Tissue: Human Testis. Primary antibody Concentration: 1:100. Secondary Antibody: Donkey anti-Rabbit-Cy3. Secondary Antibody Concentration: 1:200. Magnification: 20x.



Immunohistochemistry-Paraffin: LRP2BP Antibody [NBP2-87741] - Rabbit Anti-Lrp2bp antibody. Formalin Fixed Paraffin Embedded Tissue: Human Kidney. Primary antibody Concentration: 1:100. Secondary Antibody: Donkey anti-Rabbit-Cy3. Secondary Antibody Concentration: 1:200. Magnification: 20x.





Novus Biologicals USA

10730 E. Briarwood Avenue
Centennial, CO 80112
USA
Phone: 303.730.1950
Toll Free: 1.888.506.6887
Fax: 303.730.1966
nb-customerservice@bio-techne.com

Bio-Techne Canada

21 Canmotor Ave
Toronto, ON M8Z 4E6
Canada
Phone: 905.827.6400
Toll Free: 855.668.8722
Fax: 905.827.6402
canada.inquires@bio-techne.com

Bio-Techne Ltd

19 Barton Lane
Abingdon Science Park
Abingdon, OX14 3NB, United Kingdom
Phone: (44) (0) 1235 529449
Free Phone: 0800 37 34 15
Fax: (44) (0) 1235 533420
info.EMEA@bio-techne.com

General Contact Information

www.novusbio.com
Technical Support: nb-technical@bio-
techne.com
Orders: nb-customerservice@bio-techne.com
General: novus@novusbio.com

Limitations

This product is for research use only and is not approved for use in humans or in clinical diagnosis. Primary Antibodies are guaranteed for 1 year from date of receipt.

For more information on our 100% guarantee, please visit www.novusbio.com/guarantee

Earn gift cards/discounts by submitting a review: www.novusbio.com/reviews/submit/NBP2-87741

Earn gift cards/discounts by submitting a publication using this product:
www.novusbio.com/publications

