

# Product Datasheet

## APEX2 Antibody - BSA Free

### NBP2-84441-0.1ml

Unit Size: 0.1 ml

Store at 4C short term. Aliquot and store at -20C long term. Avoid freeze-thaw cycles.

[www.novusbio.com](http://www.novusbio.com)



[technical@novusbio.com](mailto:technical@novusbio.com)

Reviews: 1

Protocols, Publications, Related Products, Reviews, Research Tools and Images at:  
[www.novusbio.com/NBP2-84441](http://www.novusbio.com/NBP2-84441)

Updated 2/26/2025 v.20.1

Earn rewards for product  
reviews and publications.

Submit a publication at [www.novusbio.com/publications](http://www.novusbio.com/publications)

Submit a review at [www.novusbio.com/reviews/destination/NBP2-84441](http://www.novusbio.com/reviews/destination/NBP2-84441)



**NBP2-84441-0.1ml**

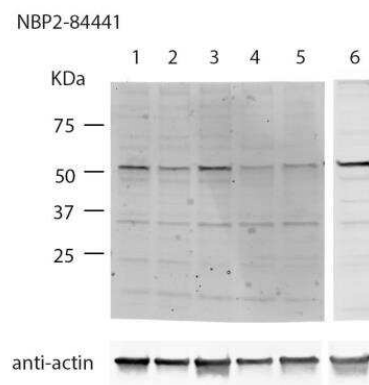
APEX2 Antibody - BSA Free

Product Information	
Unit Size	0.1 ml
Concentration	0.5 mg/ml
Storage	Store at 4C short term. Aliquot and store at -20C long term. Avoid freeze-thaw cycles.
Clonality	Polyclonal
Preservative	0.09% Sodium Azide
Purity	Affinity purified
Buffer	PBS, 2% Sucrose
Product Description	
Host	Rabbit
Gene ID	27301
Gene Symbol	APEX2
Species	Human
Immunogen	The immunogen is a synthetic peptide directed towards the C-terminal region of human APEX2. Peptide sequence: LMTPKTPEEKAVAKVVKGQAKTSEAKDEKELRTSFWKSVLAGPLRTPLCG The peptide sequence for this immunogen was taken from within the described region.
Product Application Details	
Applications	Western Blot
Recommended Dilutions	Western Blot 1.0 ug/ml

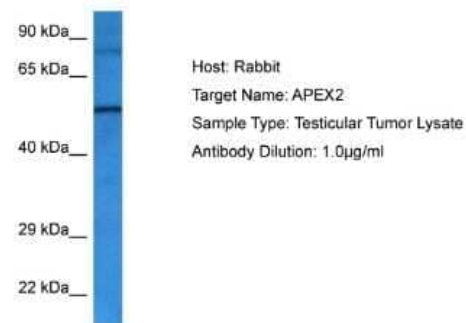


## Images

Western Blot: APEX2 Antibody [NBP2-84441] - Samples: lane 1-5: U2OS cell lysate, lanes 6 HEK293T cell lysate. Lane 1: non-targeting siRNA control, lane 2: APEX2\_5 siRNA, lanes 3: APEX2\_6 siRNA, lanes 4: APEX2\_7 siRNA, lanes 5: APEX2\_8 siRNA. Below: loading control, anti-actin mouse ab 1:5000. Western blot conditions: Cells were pelleted and lysed in RIPA buffer with protease inhibitors. Lysates were centrifuged at 16 000 g for 10 min and 9 ug of lysate was loaded in each lane on a 4-15% SDS-PAGE gel. Samples were transferred on a nitrocellulose membrane and blocked with 1.5% BSA O/N. NBP2-84441 antibody was diluted 1:500 (1 ug/ml) in TBST and incubated for 2 h. Image from verified customer review.



Western Blot: APEX2 Antibody [NBP2-84441] - Host: Rabbit. Target Name: APEX2. Sample Tissue: Human Testicular Tumor lysates. Antibody Dilution: 1ug/ml





### **Novus Biologicals USA**

10730 E. Briarwood Avenue  
Centennial, CO 80112  
USA  
Phone: 303.730.1950  
Toll Free: 1.888.506.6887  
Fax: 303.730.1966  
nb-customerservice@bio-techne.com

### **Bio-Techne Canada**

21 Canmotor Ave  
Toronto, ON M8Z 4E6  
Canada  
Phone: 905.827.6400  
Toll Free: 855.668.8722  
Fax: 905.827.6402  
canada.inquires@bio-techne.com

### **Bio-Techne Ltd**

19 Barton Lane  
Abingdon Science Park  
Abingdon, OX14 3NB, United Kingdom  
Phone: (44) (0) 1235 529449  
Free Phone: 0800 37 34 15  
Fax: (44) (0) 1235 533420  
info.EMEA@bio-techne.com

### **General Contact Information**

www.novusbio.com  
Technical Support: nb-technical@bio-techne.com  
Orders: nb-customerservice@bio-techne.com  
General: novus@novusbio.com

### **Products Related to NBP2-84441-0.1ml**

---

HAF008	Goat anti-Rabbit IgG Secondary Antibody [HRP]
NB7160	Goat anti-Rabbit IgG (H+L) Secondary Antibody [HRP]
NBP2-58257PEP	APEX2 Recombinant Protein Antigen
207-IL-005	IL-7 [Unconjugated]

---

### **Limitations**

This product is for research use only and is not approved for use in humans or in clinical diagnosis. Primary Antibodies are guaranteed for 1 year from date of receipt.

For more information on our 100% guarantee, please visit [www.novusbio.com/guarantee](http://www.novusbio.com/guarantee)

Earn gift cards/discounts by submitting a review: [www.novusbio.com/reviews/submit/NBP2-84441](http://www.novusbio.com/reviews/submit/NBP2-84441)

Earn gift cards/discounts by submitting a publication using this product:  
[www.novusbio.com/publications](http://www.novusbio.com/publications)

