

# Product Datasheet

## DEPDC1B Antibody - BSA Free NBP2-81913

Unit Size: 0.1 mg

Store at 4C short term. Aliquot and store at -20C long term. Avoid freeze-thaw cycles.

[www.novusbio.com](http://www.novusbio.com)



[technical@novusbio.com](mailto:technical@novusbio.com)

Protocols, Publications, Related Products, Reviews, Research Tools and Images at:  
[www.novusbio.com/NBP2-81913](http://www.novusbio.com/NBP2-81913)

Updated 10/19/2023 v.20.1

Earn rewards for product  
reviews and publications.

Submit a publication at [www.novusbio.com/publications](http://www.novusbio.com/publications)

Submit a review at [www.novusbio.com/reviews/destination/NBP2-81913](http://www.novusbio.com/reviews/destination/NBP2-81913)



**NBP2-81913**

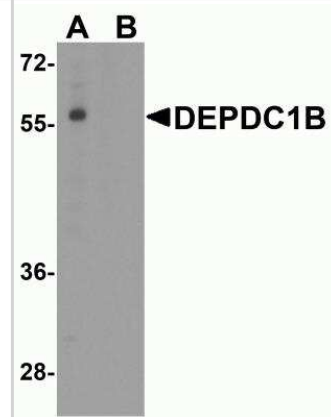
DEPDC1B Antibody - BSA Free

Product Information	
Unit Size	0.1 mg
Concentration	1 mg/ml
Storage	Store at 4C short term. Aliquot and store at -20C long term. Avoid freeze-thaw cycles.
Clonality	Polyclonal
Preservative	0.02% Sodium Azide
Isotype	IgG
Purity	Peptide affinity purified
Buffer	PBS
Target Molecular Weight	57 kDa
Product Description	
Host	Rabbit
Gene ID	55789
Gene Symbol	DEPDC1B
Species	Human
Reactivity Notes	Immunogen displays the following percentage of sequence identity for non-tested species: Chicken: (88%)
Specificity/Sensitivity	DEPDC1B antibody is human specific. At least two isoforms are known to exist; this antibody will only detect the largest isoform. DEPDC1B antibody is predicted to not cross-react with DEPDC1A.
Immunogen	DEPDC1B antibody was raised against a 19 amino acid peptide near the carboxy terminus of human DEPDC1B. The immunogen is located within the last 50 amino acids of DEPDC1B. Amino Acid Sequence: ALKKPFQPFQRTRSFRM
Product Application Details	
Applications	Western Blot, ELISA, Immunohistochemistry, Immunohistochemistry-Paraffin
Recommended Dilutions	Western Blot 1-2 ug/ml, ELISA, Immunohistochemistry 5 ug/ml, Immunohistochemistry-Paraffin 5 ug/ml

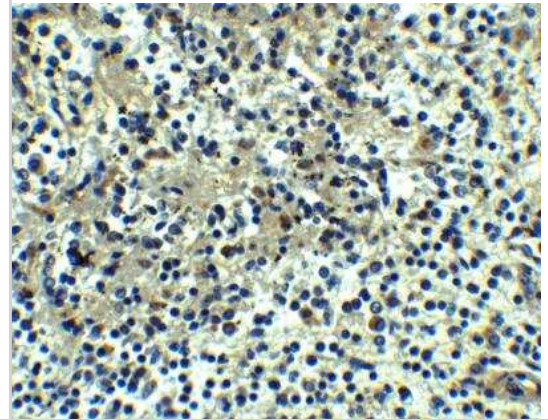


## Images

Western Blot: DEPDC1B Antibody [NBP2-81913] - Analysis of DEPDC1B in K562 cell lysate with DEPDC1B antibody at 1 ug/ml in (A) the absence and (B) presence of blocking peptide.



Immunohistochemistry-Paraffin: DEPDC1B Antibody [NBP2-81913] - Analysis of DEPDC1B in human spleen tissue with DEPDC1B antibody at 5 ug/ml.





### **Novus Biologicals USA**

10730 E. Briarwood Avenue  
Centennial, CO 80112  
USA  
Phone: 303.730.1950  
Toll Free: 1.888.506.6887  
Fax: 303.730.1966  
nb-customerservice@bio-techne.com

### **Bio-Techne Canada**

21 Canmotor Ave  
Toronto, ON M8Z 4E6  
Canada  
Phone: 905.827.6400  
Toll Free: 855.668.8722  
Fax: 905.827.6402  
canada.inquires@bio-techne.com

### **Bio-Techne Ltd**

19 Barton Lane  
Abingdon Science Park  
Abingdon, OX14 3NB, United Kingdom  
Phone: (44) (0) 1235 529449  
Free Phone: 0800 37 34 15  
Fax: (44) (0) 1235 533420  
info.EMEA@bio-techne.com

### **General Contact Information**

www.novusbio.com  
Technical Support: nb-technical@bio-techne.com  
Orders: nb-customerservice@bio-techne.com  
General: novus@novusbio.com

### **Products Related to NBP2-81913**

---

HAF008	Goat anti-Rabbit IgG Secondary Antibody [HRP]
NB7160	Goat anti-Rabbit IgG (H+L) Secondary Antibody [HRP]
NBP2-24891	Rabbit IgG Isotype Control
H00055789-P01-10ug	Recombinant Human DEPDC1B GST (N-Term) Protein

---

### **Limitations**

This product is for research use only and is not approved for use in humans or in clinical diagnosis. Primary Antibodies are guaranteed for 1 year from date of receipt.

For more information on our 100% guarantee, please visit [www.novusbio.com/guarantee](http://www.novusbio.com/guarantee)

Earn gift cards/discounts by submitting a review: [www.novusbio.com/reviews/submit/NBP2-81913](http://www.novusbio.com/reviews/submit/NBP2-81913)

Earn gift cards/discounts by submitting a publication using this product:  
[www.novusbio.com/publications](http://www.novusbio.com/publications)

