

Product Datasheet

CAPC / LRRC26 Antibody - BSA Free NBP2-81900

Unit Size: 0.1 mg

Store at 4C short term. Aliquot and store at -20C long term. Avoid freeze-thaw cycles.

www.novusbio.com



technical@novusbio.com

Protocols, Publications, Related Products, Reviews, Research Tools and Images at:
www.novusbio.com/NBP2-81900

Updated 10/19/2023 v.20.1

Earn rewards for product
reviews and publications.

Submit a publication at www.novusbio.com/publications

Submit a review at www.novusbio.com/reviews/destination/NBP2-81900



NBP2-81900

CAPC / LRRC26 Antibody - BSA Free

Product Information

Unit Size	0.1 mg
Concentration	1 mg/ml
Storage	Store at 4C short term. Aliquot and store at -20C long term. Avoid freeze-thaw cycles.
Clonality	Polyclonal
Preservative	0.02% Sodium Azide
Isotype	IgG
Purity	Peptide affinity purified
Buffer	PBS
Target Molecular Weight	48 kDa

Product Description

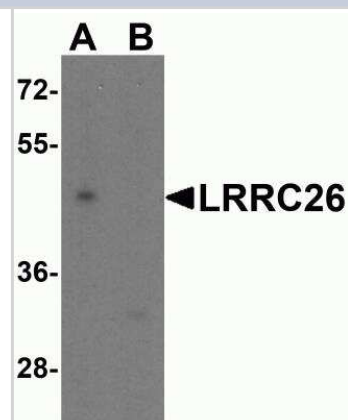
Host	Rabbit
Gene ID	389816
Gene Symbol	LRRC26
Species	Human
Specificity/Sensitivity	CAPC/LRRC26 antibody is human specific.
Immunogen	LRRC26 antibody was raised against an 18 amino acid peptide near the carboxy terminus of human LRRC26. The immunogen is located within the last 50 amino acids of LRRC26. Amino Acid Sequence: ALRPPRPPDPNPDPDPHG

Product Application Details

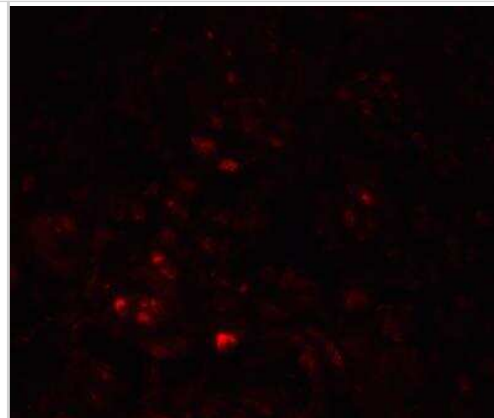
Applications	Western Blot, ELISA, Immunocytochemistry/ Immunofluorescence, Immunohistochemistry, Immunohistochemistry-Paraffin
Recommended Dilutions	Western Blot 0.5-1 ug/ml, ELISA, Immunohistochemistry 2.5 ug/ml, Immunocytochemistry/ Immunofluorescence 20 ug/ml, Immunohistochemistry-Paraffin

Images

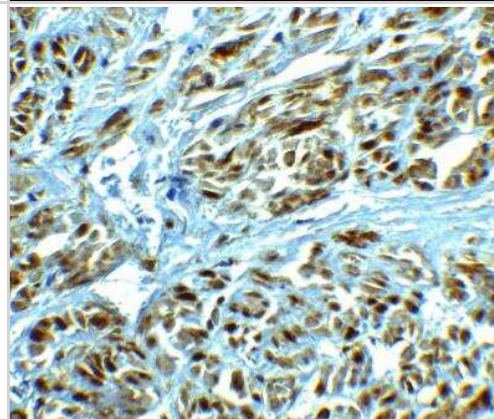
Western Blot: CAPC / LRRC26 Antibody [NBP2-81900] - Analysis of CAPC / LRRC26 in Jurkat cell lysate with CAPC / LRRC26 antibody at 0.5 ug/ml in (A) the absence and (B) presence of blocking peptide.



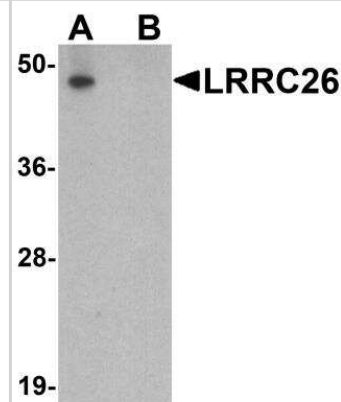
Immunocytochemistry/Immunofluorescence: CAPC / LRRC26 Antibody [NBP2-81900] - Analysis of CAPC / LRRC26 in human prostate tissue with CAPC / LRRC26 antibody at 20 ug/ml.



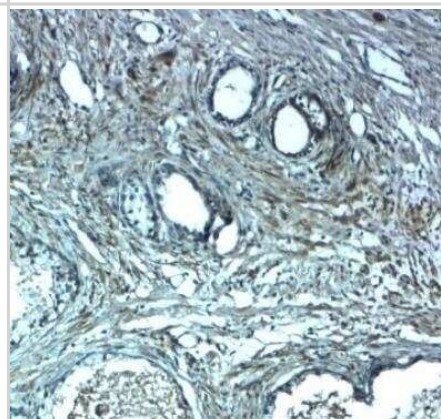
Immunohistochemistry: CAPC / LRRC26 Antibody [NBP2-81900] - Analysis of CAPC / LRRC26 in human prostate tissue with CAPC / LRRC26 antibody at 2.5 ug/ml.



Western Blot: CAPC / LRRC26 Antibody [NBP2-81900] - Analysis of CAPC / LRRC26 in human prostate tissue lysate with CAPC / LRRC26 antibody at 0.5 ug/ml in (A) the absence and (B) presence of blocking peptide.



Immunohistochemistry: CAPC / LRRC26 Antibody [NBP2-81900] - Analysis of CAPC / LRRC26 in human prostate tissue with CAPC / LRRC26 antibody at 2.5 ug/ml.





Novus Biologicals USA

10730 E. Briarwood Avenue
Centennial, CO 80112
USA
Phone: 303.730.1950
Toll Free: 1.888.506.6887
Fax: 303.730.1966
nb-customerservice@bio-techne.com

Bio-Techne Canada

21 Canmotor Ave
Toronto, ON M8Z 4E6
Canada
Phone: 905.827.6400
Toll Free: 855.668.8722
Fax: 905.827.6402
canada.inquires@bio-techne.com

Bio-Techne Ltd

19 Barton Lane
Abingdon Science Park
Abingdon, OX14 3NB, United Kingdom
Phone: (44) (0) 1235 529449
Free Phone: 0800 37 34 15
Fax: (44) (0) 1235 533420
info.EMEA@bio-techne.com

General Contact Information

www.novusbio.com
Technical Support: nb-technical@bio-techne.com
Orders: nb-customerservice@bio-techne.com
General: novus@novusbio.com

Products Related to NBP2-81900

HAF008	Goat anti-Rabbit IgG Secondary Antibody [HRP]
NB7160	Goat anti-Rabbit IgG (H+L) Secondary Antibody [HRP]
NBP2-24891	Rabbit IgG Isotype Control
NBP2-30877PEP	CAPC / LRRC26 Recombinant Protein Antigen

Limitations

This product is for research use only and is not approved for use in humans or in clinical diagnosis. Primary Antibodies are guaranteed for 1 year from date of receipt.

For more information on our 100% guarantee, please visit www.novusbio.com/guarantee

Earn gift cards/discounts by submitting a review: www.novusbio.com/reviews/submit/NBP2-81900

Earn gift cards/discounts by submitting a publication using this product:
www.novusbio.com/publications

