

Product Datasheet

VEGFR2/KDR/Flk-1 Antibody (2C6) - Azide and BSA Free NBP2-81009

Unit Size: 0.1 mg

Store at 4C short term. Aliquot and store at -20C long term. Avoid freeze-thaw cycles.

www.novusbio.com



technical@novusbio.com

Protocols, Publications, Related Products, Reviews, Research Tools and Images at:
www.novusbio.com/NBP2-81009

Updated 9/11/2020 v.20.1

Earn rewards for product
reviews and publications.

Submit a publication at www.novusbio.com/publications

Submit a review at www.novusbio.com/reviews/destination/NBP2-81009



NBP2-81009

VEGFR2/KDR/Flk-1 Antibody (2C6) - Azide and BSA Free

Product Information

Unit Size	0.1 mg
Concentration	1 mg/ml
Storage	Store at 4C short term. Aliquot and store at -20C long term. Avoid freeze-thaw cycles.
Clonality	Monoclonal
Clone	2C6
Preservative	No Preservative
Isotype	IgG1 Kappa
Purity	Protein G purified
Buffer	PBS

Product Description

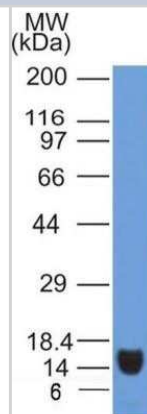
Host	Mouse
Gene ID	3791
Gene Symbol	KDR
Species	Human
Immunogen	Partial recombinant human VEGFR2 protein (between amino acids 300-600) [UniProt# P35968].

Product Application Details

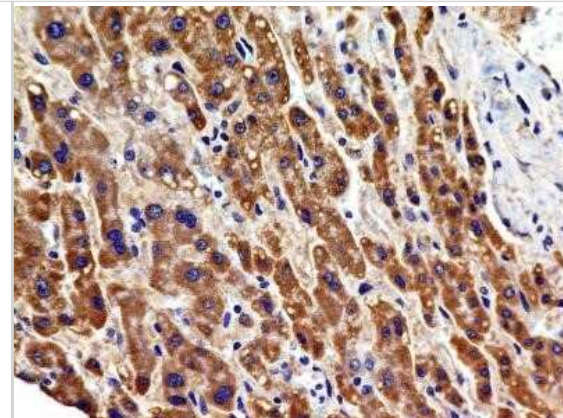
Applications	Western Blot, Flow (Cell Surface), Immunocytochemistry/ Immunofluorescence, Immunohistochemistry, Immunohistochemistry-Paraffin, Immunocytochemistry
Recommended Dilutions	Western Blot 1.0 ug/ml, Immunohistochemistry, Immunocytochemistry/ Immunofluorescence 1:50 - 1:100, Immunohistochemistry-Paraffin 5 ug/ml, Flow (Cell Surface), Immunocytochemistry

Images

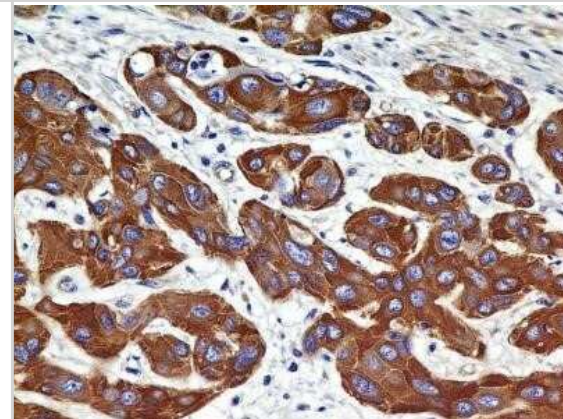
Western Blot: VEGFR2/KDR/Flk-1 Antibody (2C6) - Azide and BSA Free [NBP2-81009] - Analysis of VEGF R2/KDR/Flk-1 (clone 2C6) in partial recombinant protein. Image from the standard format of this antibody.



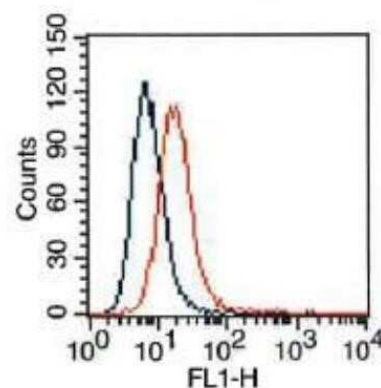
Immunocytochemistry: VEGFR2/KDR/Flk-1 Antibody (2C6) - Azide and BSA Free [NBP2-81009] - Analysis of FFPE tissue section of Human Hepatocellular Carcinoma with antibody at 5 ug/ml concentration. The cancer cells depicted a specific and strong staining in the cytoplasm. Image from the standard format of this antibody.



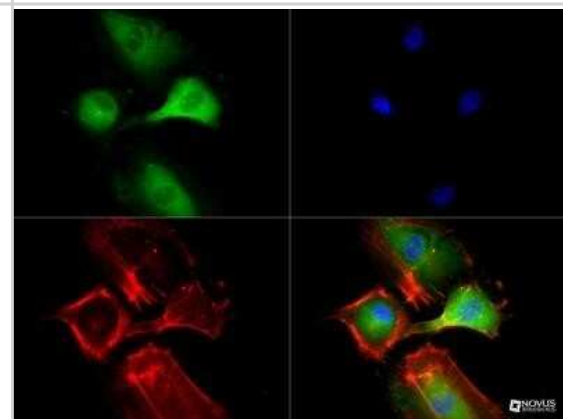
Immunohistochemistry-Paraffin: VEGFR2/KDR/Flk-1 Antibody (2C6) - Azide and BSA Free [NBP2-81009] - Analysis of FFPE tissue section of Human SCC of Esophagus with antibody at 5 ug/ml concentration. The cancer cells depicted a specific and strong staining in the cytoplasm while the tumor stroma was negative for VEGF R2/KDR/Flk-1 immunopositivity. Image f



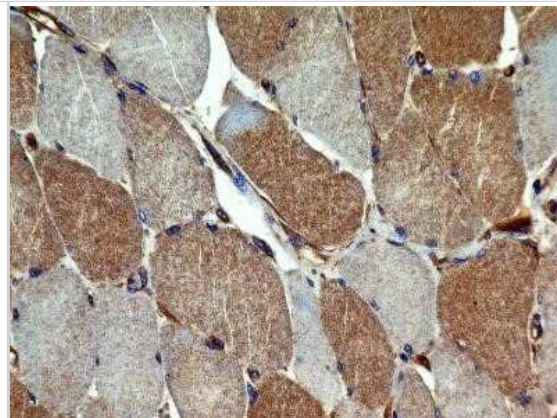
Flow (Cell Surface): VEGFR2/KDR/Flk-1 Antibody (2C6) - Azide and BSA Free [NBP2-81009] - HepG2 cells were stained (surface) with antibody (orange) or isotype control, mouse IgG1 (blue). Positive staining observed using FITC conjugated mouse anti-IgG(H+L) secondary antibody. Live cells (PPI negative) were gated for analysis. Image from the standard format of this antibody.



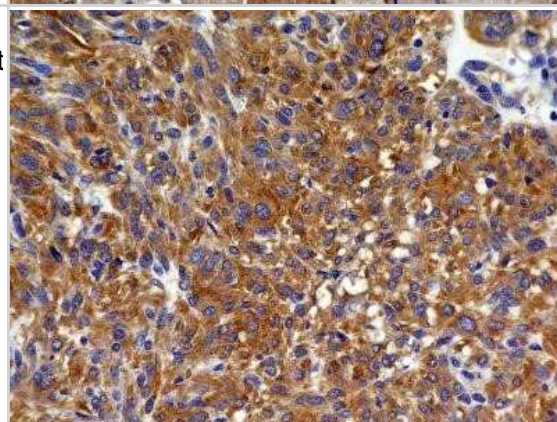
Immunocytochemistry/Immunofluorescence: VEGFR2/KDR/Flk-1 Antibody (2C6) - Azide and BSA Free [NBP2-81009] - Antibody (1:50) was tested in HUVEC cells with DyLight 488 (green). Nuclei and alpha-tubulin were counterstained with DAPI (blue) and DyLight 550 (red). Image from the standard format of this antibody.



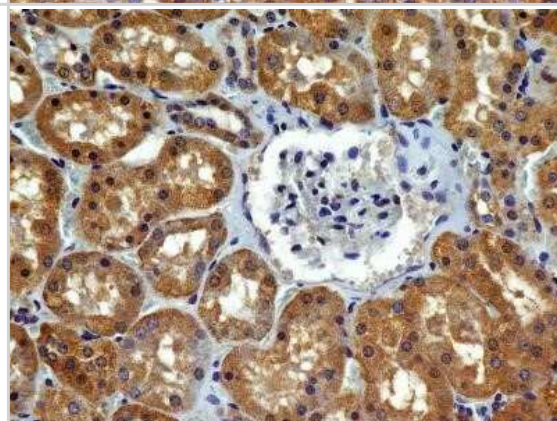
Immunohistochemistry: VEGFR2/KDR/Flk-1 Antibody (2C6) - Azide and BSA Free [NBP2-81009] - Analysis of FFPE transverse section of normal human skeletal muscle with antibody at 5 ug/ml concentration. The myocytes showed a moderate diffused to granular staining in the cytoplasm. Image from the standard format of this antibody.



Immunohistochemistry: VEGFR2/KDR/Flk-1 Antibody (2C6) - Azide and BSA Free [NBP2-81009] - Analysis of FFPE tissue section of a malignant stromal tumor of the human small bowel with antibody at 5 ug/ml concentration. The cancer cells depicted a specific and strong staining in the cytoplasm. Image from the standard format of this antibody.



Immunohistochemistry-Paraffin: VEGFR2/KDR/Flk-1 Antibody (2C6) - Azide and BSA Free [NBP2-81009] - Analysis of FFPE tissue section of human normal kidney with antibody at 5 ug/ml concentration. The cuboidal epithelial cells of various tubules/ducts showed a specific cytoplasmic immunopositivity of VEGF R2/KDR/Flk-1 protein. Image from the standard f





Novus Biologicals USA

10730 E. Briarwood Avenue
Centennial, CO 80112
USA
Phone: 303.730.1950
Toll Free: 1.888.506.6887
Fax: 303.730.1966
nb-customerservice@bio-techne.com

Bio-Techne Canada

21 Canmotor Ave
Toronto, ON M8Z 4E6
Canada
Phone: 905.827.6400
Toll Free: 855.668.8722
Fax: 905.827.6402
canada.inquires@bio-techne.com

Bio-Techne Ltd

19 Barton Lane
Abingdon Science Park
Abingdon, OX14 3NB, United Kingdom
Phone: (44) (0) 1235 529449
Free Phone: 0800 37 34 15
Fax: (44) (0) 1235 533420
info.EMEA@bio-techne.com

General Contact Information

www.novusbio.com
Technical Support: nb-technical@bio-techne.com
Orders: nb-customerservice@bio-techne.com
General: novus@novusbio.com

Products Related to NBP2-81009

HAF007	Goat anti-Mouse IgG Secondary Antibody [HRP]
NB720-B	Rabbit anti-Mouse IgG (H+L) Secondary Antibody [Biotin]
NBP1-43319-0.5mg	Mouse IgG1 Kappa Isotype Control (P3.6.2.8.1)
NB100-529PEP	VEGFR2/KDR/Flk-1 Antibody Blocking Peptide

Limitations

This product is for research use only and is not approved for use in humans or in clinical diagnosis. Primary Antibodies are guaranteed for 1 year from date of receipt.

For more information on our 100% guarantee, please visit www.novusbio.com/guarantee

Earn gift cards/discounts by submitting a review: www.novusbio.com/reviews/submit/NBP2-81009

Earn gift cards/discounts by submitting a publication using this product:
www.novusbio.com/publications

