

Product Datasheet

SREBP1 Antibody (2A4) - Azide and BSA Free NBP2-80959

Unit Size: 0.1 ml

Store at 4C short term. Aliquot and store at -20C long term. Avoid freeze-thaw cycles.

www.novusbio.com



technical@novusbio.com

Protocols, Publications, Related Products, Reviews, Research Tools and Images at:
www.novusbio.com/NBP2-80959

Updated 9/9/2025 v.20.1

Earn rewards for product
reviews and publications.

Submit a publication at www.novusbio.com/publications

Submit a review at www.novusbio.com/reviews/destination/NBP2-80959



NBP2-80959

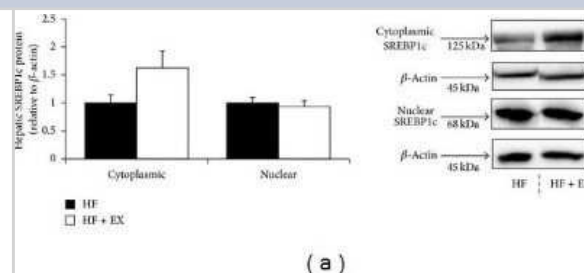
SREBP1 Antibody (2A4) - Azide and BSA Free

Product Information	
Unit Size	0.1 ml
Concentration	1 mg/ml
Storage	Store at 4C short term. Aliquot and store at -20C long term. Avoid freeze-thaw cycles.
Clonality	Monoclonal
Clone	2A4
Preservative	No Preservative
Isotype	IgG1 Kappa
Purity	Protein G purified
Buffer	PBS
Product Description	
Description	Novus Biologicals Knockout (KO) Validated Mouse SREBP1 Antibody (2A4) - Azide and BSA Free (NB600-582) is a monoclonal antibody validated for use in IHC, WB and Simple Western. All Novus Biologicals antibodies are covered by our 100% guarantee.
Host	Mouse
Gene ID	6720
Gene Symbol	SREBF1
Species	Human, Mouse, Rat, Canine, Chicken, Hamster, Monkey, Golden Syrian Hamster
Reactivity Notes	Canine reactivity reported in scientific literature (PMID: 23720350). Hamster reactivity reported in scientific literature (PMID: 24393244). Chicken reactivity reported in multiple pieces scientific literature. Monkey reactivity reported in scientific literature (PMID: 26437365).
Immunogen	6 His-tag fusion protein of human SREBP1 corresponding to amino acids 301-407. [UniProt# P36956]
Product Application Details	
Applications	Western Blot, Simple Western, Immunohistochemistry, Knockout Validated
Recommended Dilutions	Western Blot 1-2ug/ml, Simple Western 1:12.5, Immunohistochemistry, Knockout Validated
Application Notes	<p>This SREBP1 (clone 2A4) antibody is useful for WB where a band can be seen at 125 kDa (precursor) and additional bands may be seen at 60-70 kDa (cleaved).</p> <p>In Simple Western only 10 - 15 uL of the recommended dilution is used per data point.</p> <p>See Simple Western Antibody Database for Simple Western validation: antibody dilution of 1:12.5. Separated by Size-Wes, Sally Sue/Peggy Sue.</p>

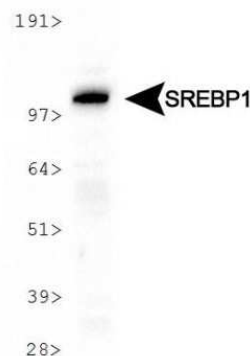


Images

Western Blot: SREBP1 Antibody (2A4) - Azide and BSA Free [NBP2-80959] - Hepatic SREBP1c and SREBP2 protein abundance in C57BL/6 mice assigned to a high-fat (HF) or a high-fat/exercise (HF + EX) group for 8 weeks. Cytosolic and nuclear SREBP1c abundance. Image collected and cropped by CiteAb from the following publication (<https://www.hindawi.com/journals/jl/2013/908048/>), licensed under a CC-BY license. Image from the standard format of this antibody.



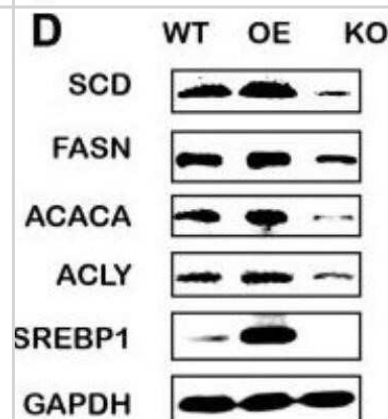
Western Blot: SREBP1 Antibody (2A4) - Azide and BSA Free [NBP2-80959] - Analysis of whole cell lysate from HeLa cells showing a single specific band for the expression of SREBP1 precursor protein (~120 kDa). Image from the standard format of this antibody.



Simple Western: SREBP1 Antibody (2A4) - Azide and BSA Free [NBP2-80959] - Lane view shows a specific band for SREBP1 in 1.0 mg/ml of HeLa lysate. This experiment was performed under reducing conditions using the 12-230 kDa separation system. Image from the standard format of this antibody.



Western Blot: SREBP1 Antibody (2A4) - Azide and BSA Free [NBP2-80959] - KO and OE of SREBP1 influenced lipid metabolism in Bel-7402 cells. The protein level of lipid-associated genes in SREBP1-KO, SREBP1-OE, and WT Bel-7402 cells. Data were expressed as mean \pm standard error of the mean. * $P < 0.05$, ** $P < 0.01$, and *** $P < 0.001$ vs. WT group, respectively. Image from the standard format of this antibody.





Novus Biologicals USA

10730 E. Briarwood Avenue
Centennial, CO 80112
USA
Phone: 303.730.1950
Toll Free: 1.888.506.6887
Fax: 303.730.1966
nb-customerservice@bio-techne.com

Bio-Techne Canada

21 Canmotor Ave
Toronto, ON M8Z 4E6
Canada
Phone: 905.827.6400
Toll Free: 855.668.8722
Fax: 905.827.6402
canada.inquires@bio-techne.com

Bio-Techne Ltd

19 Barton Lane
Abingdon Science Park
Abingdon, OX14 3NB, United Kingdom
Phone: (44) (0) 1235 529449
Free Phone: 0800 37 34 15
Fax: (44) (0) 1235 533420
info.EMEA@bio-techne.com

General Contact Information

www.novusbio.com
Technical Support: nb-technical@bio-techne.com
Orders: nb-customerservice@bio-techne.com
General: novus@novusbio.com

Products Related to NBP2-80959

HAF007	Goat anti-Mouse IgG Secondary Antibody [HRP]
NB720-B	Rabbit anti-Mouse IgG (H+L) Secondary Antibody [Biotin]
NBP1-43319-0.5mg	Mouse IgG1 Kappa Isotype Control (P3.6.2.8.1)
NB100-2215PEP	SREBP1 Antibody Blocking Peptide

Limitations

This product is for research use only and is not approved for use in humans or in clinical diagnosis. Primary Antibodies are guaranteed for 1 year from date of receipt.

For more information on our 100% guarantee, please visit www.novusbio.com/guarantee

Earn gift cards/discounts by submitting a review: www.novusbio.com/reviews/submit/NBP2-80959

Earn gift cards/discounts by submitting a publication using this product:
www.novusbio.com/publications

