

Product Datasheet

SLC34A1 Antibody (10B1.3E9) - Azide and BSA Free NBP2-80953

Unit Size: 0.1 mg

Store at -20C. Avoid freeze-thaw cycles.

www.novusbio.com



technical@novusbio.com

Protocols, Publications, Related Products, Reviews, Research Tools and Images at:
www.novusbio.com/NBP2-80953

Updated 9/9/2025 v.20.1

Earn rewards for product
reviews and publications.

Submit a publication at www.novusbio.com/publications

Submit a review at www.novusbio.com/reviews/destination/NBP2-80953



NBP2-80953

SLC34A1 Antibody (10B1.3E9) - Azide and BSA Free

Product Information	
Unit Size	0.1 mg
Concentration	1 mg/ml
Storage	Store at -20C. Avoid freeze-thaw cycles.
Clonality	Monoclonal
Clone	10B1.3E9
Preservative	No Preservative
Isotype	IgG1 Kappa
Purity	Protein G purified
Buffer	PBS
Target Molecular Weight	68.9 kDa

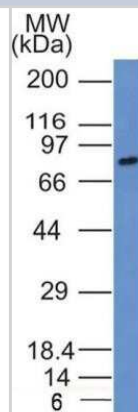
Product Description	
Description	Novus Biologicals Mouse SLC34A1 Antibody (10B1.3E9) - Azide and BSA Free (NBP2-42216) is a monoclonal antibody validated for use in IHC, WB, Flow and ICC/IF. All Novus Biologicals antibodies are covered by our 100% guarantee.
Host	Mouse
Gene ID	6569
Gene Symbol	SLC34A1
Species	Human, Mouse
Reactivity Notes	The immunogen has 78% sequence homology to Rat species.
Immunogen	Partial synthetic peptide made to an internal portion of the human SLC34A1 protein (between amino acids 25-150) [UniProt Q06495]

Product Application Details	
Applications	Western Blot, Immunohistochemistry-Paraffin, Flow Cytometry, Immunocytochemistry/ Immunofluorescence, Immunohistochemistry, CyTOF-ready
Recommended Dilutions	Western Blot 1:500, Flow Cytometry 1:1000, Immunohistochemistry 1:50-1:100, Immunocytochemistry/ Immunofluorescence 1:50, Immunohistochemistry-Paraffin 1:50-1:100, CyTOF-ready
Application Notes	SLC34A1 is a 639 amino acids long protein with predicted molecular weight of 68.9 kDa, however, because of glycosylation, the processed protein may show up at higher than predicted molecular weight position on Western blot.

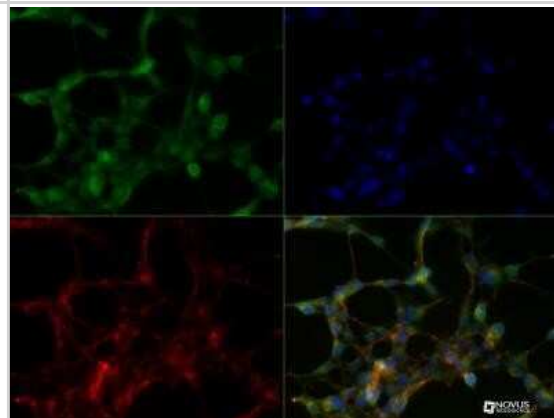


Images

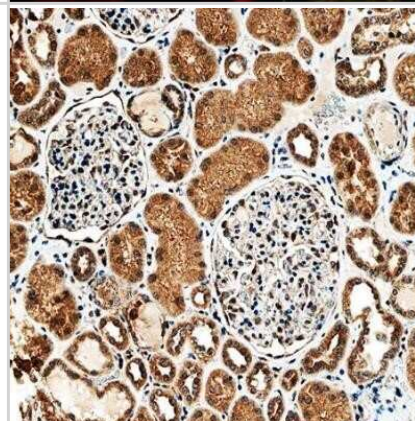
Western Blot: SLC34A1 Antibody (10B1.3E9) - Azide and BSA Free [NBP2-80953] - WB detection of SLC34A1 /NPTIIa protein in a lysate of mouse thymus using SLC34A1 clone 10B1.3E9 at its 1:500 dilution. The antibody detected a single specific band at ~80 kDa representing the glycosylated form of SLC34A1 protein. Image from the standard format of this antibody.



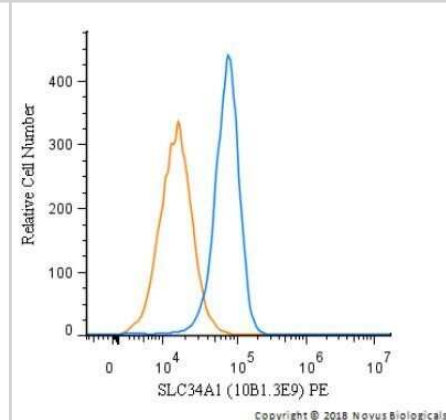
Immunocytochemistry/Immunofluorescence: SLC34A1 Antibody (10B1.3E9) - Azide and BSA Free [NBP2-80953] - Hek293 cells were fixed for 10 minutes using 10% formalin and then permeabilized using 1X TBS + 0.5% Triton-X100. The cells were incubated with hSLC34A1 (10B1.3E9) at a 1:50 dilution overnight at 4 degrees Celsius and detected with Dylight 488 (Green). Actin was detected with Phalloidin 568 (Red). Nuclei were detected with DAPI (Blue). Cells were imaged using a 40X objective. Image from the standard format of this antibody.



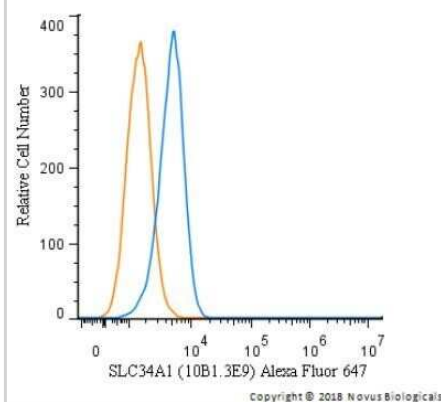
Immunohistochemistry: SLC34A1 Antibody (10B1.3E9) - Azide and BSA Free [NBP2-80953] - IHC analysis of a formalin-fixed and paraffin-embedded tissue section of human normal kidney using SLC34A1 antibody (clone 10B1.3E9) at 1:75 dilution. The epithelial cells of various renal ducts and tubules depicted very nice membrane-cytoplasmic SLC34A1



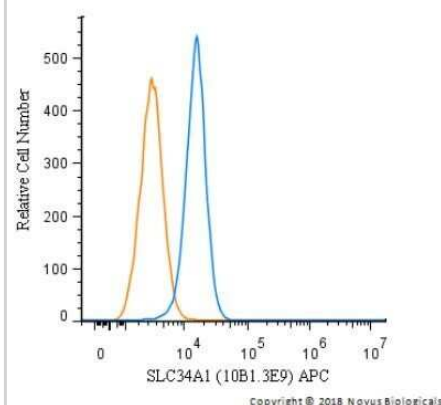
Flow Cytometry: SLC34A1 Antibody (10B1.3E9) - Azide and BSA Free [NBP2-80953] - An intracellular stain was performed on Hek293 cells with SLC34A1 Antibody [10B1.3E9] NBP2-42216PE (blue) and a matched isotype control (orange). Cells were fixed with 4% PFA and then permeabilized with 0.1% saponin. Cells were incubated in an antibody dilution of 2.5 ug/mL for 30 minutes at room temperature. Both antibodies were directly conjugated to phycoerythrin.



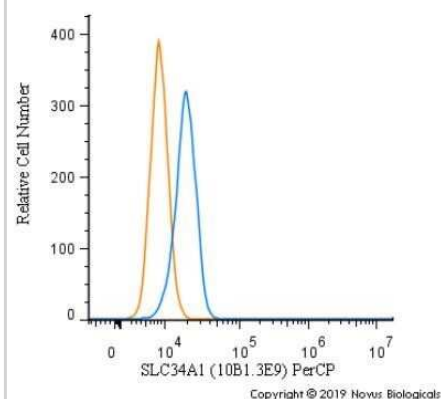
Flow Cytometry: SLC34A1 Antibody (10B1.3E9) - Azide and BSA Free [NBP2-80953] - An intracellular stain was performed on Hek293 cells with SLC34A1 Antibody [10B1.3E9] NBP2-42216AF647 (blue) and a matched isotype control (orange). Cells were fixed with 4% PFA and then permeabilized with 0.1% saponin. Cells were incubated in an antibody dilution of 5 ug/mL for 30 minutes at room temperature. Both antibodies were directly conjugated to Alexa Fluor 647.



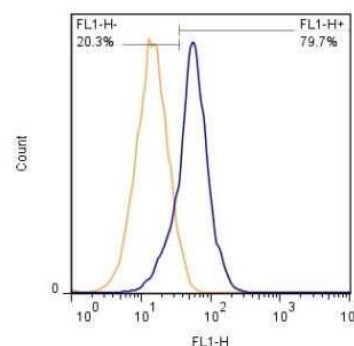
Flow Cytometry: SLC34A1 Antibody (10B1.3E9) - Azide and BSA Free [NBP2-80953] - An intracellular stain was performed on Hek293 cells with SLC34A1 Antibody [10B1.3E9] NBP2-42216APC (blue) and a matched isotype control (orange). Cells were fixed with 4% PFA and then permeabilized with 0.1% saponin. Cells were incubated in an antibody dilution of 1 ug/mL for 30 minutes at room temperature. Both antibodies were directly conjugated to Allophycocyanin.



Flow Cytometry: SLC34A1 Antibody (10B1.3E9) - Azide and BSA Free [NBP2-80953] - An intracellular stain was performed on Hek293 cells with SLC34A1 Antibody [10B1.3E9] NBP2-42216PCP (blue) and a matched isotype control (orange). Cells were fixed with 4% PFA and then permeabilized with 0.1% saponin. Cells were incubated in an antibody dilution of 10 ug/mL for 30 minutes at room temperature. Both antibodies were directly conjugated to PerCP.



Flow Cytometry: SLC34A1 Antibody (10B1.3E9) - Azide and BSA Free [NBP2-80953] - FLOW detection of SLC34A1 protein on HEK293 cells - After fixation and permeabilization, 2×10^6 cells/ml were stained using SLC34A1 antibody (clone 10B1.3E9) at 1:1000 dilution. Signal was developed using GtxMs dylight 488 secondary (blue peak). Shown with secondary control (orange peak). Data was acquired on BD FACSCalibur. Image from the standard format of this antibody.





Novus Biologicals USA

10730 E. Briarwood Avenue
Centennial, CO 80112
USA
Phone: 303.730.1950
Toll Free: 1.888.506.6887
Fax: 303.730.1966
nb-customerservice@bio-techne.com

Bio-Techne Canada

21 Canmotor Ave
Toronto, ON M8Z 4E6
Canada
Phone: 905.827.6400
Toll Free: 855.668.8722
Fax: 905.827.6402
canada.inquires@bio-techne.com

Bio-Techne Ltd

19 Barton Lane
Abingdon Science Park
Abingdon, OX14 3NB, United Kingdom
Phone: (44) (0) 1235 529449
Free Phone: 0800 37 34 15
Fax: (44) (0) 1235 533420
info.EMEA@bio-techne.com

General Contact Information

www.novusbio.com
Technical Support: nb-technical@bio-techne.com
Orders: nb-customerservice@bio-techne.com
General: novus@novusbio.com

Products Related to NBP2-80953

HAF007	Goat anti-Mouse IgG Secondary Antibody [HRP]
NB720-B	Rabbit anti-Mouse IgG (H+L) Secondary Antibody [Biotin]
NBP1-43319-0.5mg	Mouse IgG1 Kappa Isotype Control (P3.6.2.8.1)
NBP2-13328PEP	SLC34A1 Recombinant Protein Antigen

Limitations

This product is for research use only and is not approved for use in humans or in clinical diagnosis. Primary Antibodies are guaranteed for 1 year from date of receipt.

For more information on our 100% guarantee, please visit www.novusbio.com/guarantee

Earn gift cards/discounts by submitting a review: www.novusbio.com/reviews/submit/NBP2-80953

Earn gift cards/discounts by submitting a publication using this product:
www.novusbio.com/publications

