

Product Datasheet

Siglec-1/CD169 Antibody (HSn 7D2) - Azide and BSA Free NBP2-80947

Unit Size: 0.1 ml

Store at 4C short term. Aliquot and store at -20C long term. Avoid freeze-thaw cycles.

www.novusbio.com



technical@novusbio.com

Protocols, Publications, Related Products, Reviews, Research Tools and Images at:
www.novusbio.com/NBP2-80947

Updated 8/21/2023 v.20.1

Earn rewards for product
reviews and publications.

Submit a publication at www.novusbio.com/publications

Submit a review at www.novusbio.com/reviews/destination/NBP2-80947



NBP2-80947

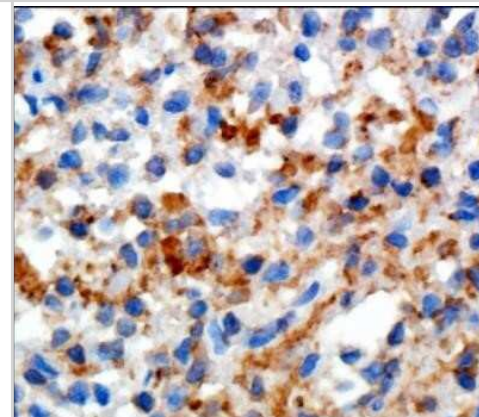
Siglec-1/CD169 Antibody (HSn 7D2) - Azide and BSA Free

Product Information	
Unit Size	0.1 ml
Concentration	1 mg/ml
Storage	Store at 4C short term. Aliquot and store at -20C long term. Avoid freeze-thaw cycles.
Clonality	Monoclonal
Clone	HSn 7D2
Preservative	No Preservative
Isotype	IgG1
Purity	Protein G purified
Buffer	PBS
Product Description	
Host	Mouse
Gene ID	6614
Gene Symbol	SIGLEC1
Species	Human, Mouse, Porcine, Virus
Reactivity Notes	Porcine reactivity reported in scientific literature (PMID: 27441395). Virus reactivity reported in scientific literature (PMID: 27487279). Mouse reactivity reported in scientific literature. Not yet tested in other species.
Immunogen	Full-length purified human Sialoadhesin (d1-4)Fc protein. [Swiss-Prot# Q9BZZ2]
Product Application Details	
Applications	Western Blot, ELISA, Flow Cytometry, Immunocytochemistry/Immunofluorescence, Immunohistochemistry, Immunohistochemistry-Frozen, Immunohistochemistry-Paraffin, In vitro assay, Radioimmunoassay, CyTOF-ready
Recommended Dilutions	Western Blot reported in scientific literature, Flow Cytometry 1:10-1:1000, ELISA 1:100-1:2000, Immunohistochemistry 1:10-1:500, Immunocytochemistry/Immunofluorescence reported in scientific literature (PMID 28794041), Immunohistochemistry-Paraffin 1:10-1:500, Immunohistochemistry-Frozen 1:10-1:500, In vitro assay reported in scientific literature (PMID 18414664), Radioimmunoassay, CyTOF-ready
Application Notes	This Sialoadhesin Antibody (HSn 7D2) is useful for Immunohistochemistry (paraffin-embedded, acetone-fixed, and frozen sections), Flow Cytometry, Radioimmunoassay and ELISA.

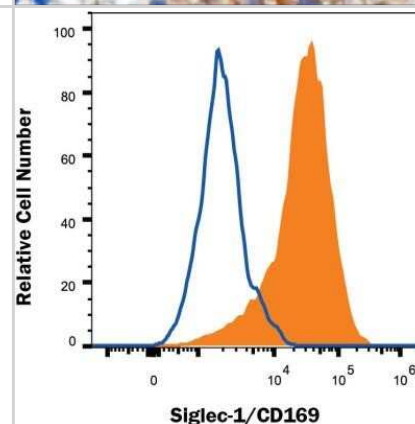


Images

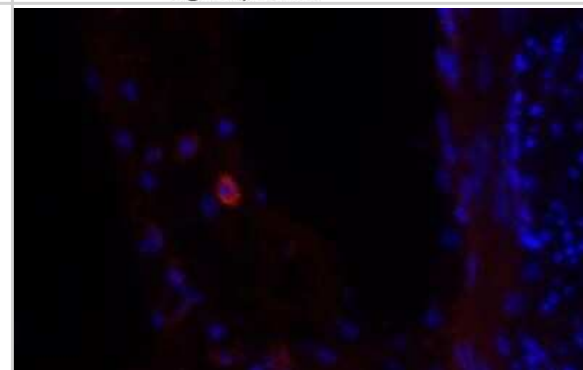
Immunohistochemistry: Siglec-1/CD169 Antibody (HSn 7D2) - Azide and BSA Free [NBP2-80947] - Staining of Sialoadhesin in human spleen using DAB with hematoxylin counterstain. Image from the standard format of this antibody.



Flow Cytometry: Siglec-1/CD169 Antibody (HSn 7D2) - Azide and BSA Free [NBP2-80947] - Human CD14+ PBMC differentiated to M1 macrophages with rhGM-CSF were stained with Mouse Anti-Siglec-1/CD169 Monoclonal Antibody (NB600-534, filled histogram), or Mouse IgG1 isotype control (MAB002, open histogram) followed by APC-conjugated Anti-Mouse IgG Secondary Antibody (F0101B). Image from the standard format of this antibody.



Immunohistochemistry: Siglec-1/CD169 Antibody (HSn 7D2) - Azide and BSA Free [NBP2-80947] - Adult mouse small intestine. NB600-534 Siglec-1 was used at 1:500 and labeled with Alexa Fluor 568 conjugated secondary antibody (Red). DAPI shown as blue. Image from verified customer review. Image from the standard format of this antibody.



**Novus Biologicals USA**

10730 E. Briarwood Avenue
Centennial, CO 80112
USA
Phone: 303.730.1950
Toll Free: 1.888.506.6887
Fax: 303.730.1966
nb-customerservice@bio-techne.com

Bio-Techne Canada

21 Canmotor Ave
Toronto, ON M8Z 4E6
Canada
Phone: 905.827.6400
Toll Free: 855.668.8722
Fax: 905.827.6402
canada.inquires@bio-techne.com

Bio-Techne Ltd

19 Barton Lane
Abingdon Science Park
Abingdon, OX14 3NB, United Kingdom
Phone: (44) (0) 1235 529449
Free Phone: 0800 37 34 15
Fax: (44) (0) 1235 533420
info.EMEA@bio-techne.com

General Contact Information

www.novusbio.com
Technical Support: nb-technical@bio-techne.com
Orders: nb-customerservice@bio-techne.com
General: novus@novusbio.com

Products Related to NBP2-80947

HAF007	Goat anti-Mouse IgG Secondary Antibody [HRP]
NB720-B	Rabbit anti-Mouse IgG (H+L) Secondary Antibody [Biotin]
NBP1-97005-0.5mg	Mouse IgG1 Isotype Control (MG1)
NBP2-30903PEP	Siglec-1/CD169 Recombinant Protein Antigen

Limitations

This product is for research use only and is not approved for use in humans or in clinical diagnosis. Primary Antibodies are guaranteed for 1 year from date of receipt.

For more information on our 100% guarantee, please visit www.novusbio.com/guarantee

Earn gift cards/discounts by submitting a review: www.novusbio.com/reviews/submit/NBP2-80947

Earn gift cards/discounts by submitting a publication using this product:
www.novusbio.com/publications

