

Product Datasheet

LC3B Antibody (1251B) - Azide and BSA Free NBP2-80831

Unit Size: 0.1 mg

Store at 4C short term. Aliquot and store at -20C long term. Avoid freeze-thaw cycles.

www.novusbio.com



technical@novusbio.com

Protocols, Publications, Related Products, Reviews, Research Tools and Images at:
www.novusbio.com/NBP2-80831

Updated 4/13/2025 v.20.1

Earn rewards for product
reviews and publications.

Submit a publication at www.novusbio.com/publications

Submit a review at www.novusbio.com/reviews/destination/NBP2-80831



NBP2-80831

LC3B Antibody (1251B) - Azide and BSA Free

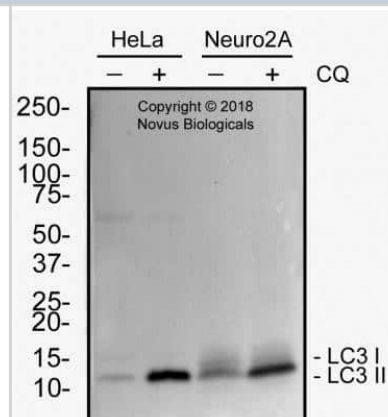
Product Information	
Unit Size	0.1 mg
Concentration	1 mg/ml
Storage	Store at 4C short term. Aliquot and store at -20C long term. Avoid freeze-thaw cycles.
Clonality	Monoclonal
Clone	1251B
Preservative	No Preservative
Isotype	IgG
Purity	Protein A or G purified
Buffer	PBS
Target Molecular Weight	14.688 kDa

Product Description	
Host	Rabbit
Gene ID	81631
Gene Symbol	MAP1LC3B
Species	Human, Mouse, Rat
Immunogen	Recombinant monoclonal LC3B Antibody (1251B) was made to a synthetic peptide made to an N-terminal portion of the human LC3B protein sequence (between residues 1-100). [UniProt# Q9GZQ8].

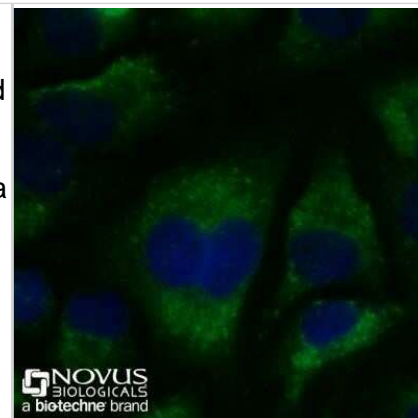
Product Application Details	
Applications	Western Blot, Simple Western, Flow (Intracellular), Immunocytochemistry/Immunofluorescence, Immunohistochemistry, Immunohistochemistry-Paraffin, Knockout Validated
Recommended Dilutions	Western Blot 0.1 ug/ml, Simple Western 5 ug/ml, Immunohistochemistry 2 - 5 ug/ml, Immunocytochemistry/Immunofluorescence 1 - 25 ug/ml, Immunohistochemistry-Paraffin 2 - 5 ug/ml, Flow (Intracellular) 1 ug/ml, Knockout Validated
Application Notes	Western blot bands are seen at ~19 kDa, representing LC3-I, and ~17 kDa, representing LC3-II.

Images

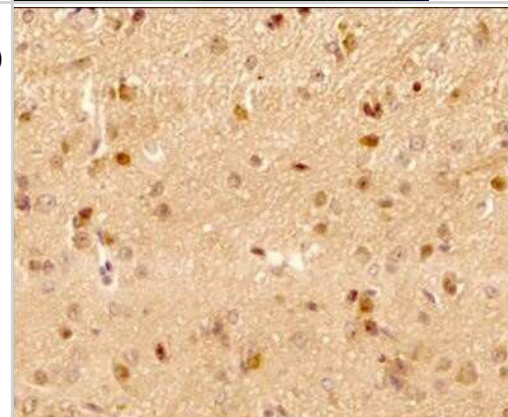
Western Blot: LC3B Antibody (1251B) - Azide and BSA Free [NBP2-80831] - Total protein from HeLa and Neuro2A cells treated with or without 50 uM chloroquine (CQ) for 24 hours was separated on a 4-15% gel by SDS-PAGE, transferred to 0.2 um PVDF (Polyvinylidene difluoride) membrane and blocked in 5% non-fat milk in TBST (Tris-buffered saline, 0.1% Tween 20). The membrane was probed with 12.0 ug/ml anti-LC3B Antibody (1251B) [Catalog # NBP2-60735] in 1% non-fat milk in TBST and detected with an anti-rabbit HRP secondary antibody using chemiluminescence. Image from the standard format of this antibody.



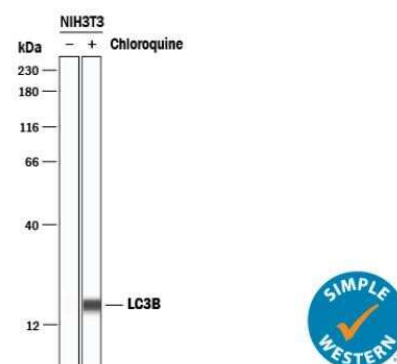
Immunocytochemistry/Immunofluorescence: LC3B Antibody (1251B) - Azide and BSA Free [NBP2-80831] - HeLa cells were treated with 50uM CQ (Chloroquine) overnight, fixed for 10 minutes using 10% formalin and then permeabilized for 5 minutes using 1X PBS + 0.05% Triton X-100. The cells were incubated with anti- [Catalog # NBP2-60735] at 2 ug/ml overnight at 4C and detected with an anti-rabbit DyLight 488 (Green) at a 1:500 dilution. Nuclei were counterstained with DAPI (Blue). Cells were imaged using a 40X objective. Image from the standard format of this antibody.



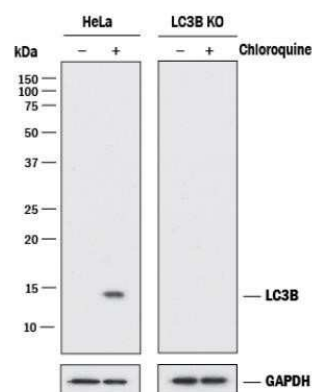
Immunohistochemistry: LC3B Antibody (1251B) - Azide and BSA Free [NBP2-80831] - Analysis of a FFPE (Formalin-Fixed Paraffin-Embedded) tissue section of mouse brain using anti-LC3B antibody (clone 1251B) [Catalog # NBP2-60735] at 5ug/ml concentration (1:200 dilution). The primary antibody binding to LC3 in cells was detected using HRP



Simple Western: LC3B Antibody (1251B) - Azide and BSA Free [NBP2-80831] - Lane view shows lysates of NIH-3T3 mouse embryonic fibroblast cell line untreated (-) or treated (+) with 50uM Chloroquine for 18 hours, loaded at 0.2 mg/mL. A specific band was detected for LC3B at approximately 17 kDa (as indicated) using 5 ug/mL of Rabbit Anti-Human/Mouse/Rat anti-LC3B Monoclonal Antibody (1251B) [Catalog # NBP2-60735]. This experiment was conducted under reducing conditions and using the 12-230 kDa separation system. Image from the standard format of this antibody.



Western Blot: LC3B Antibody (1251B) - Azide and BSA Free [NBP2-80831] - Western blot analysis of HeLa human cervical epithelial carcinoma parental cell line and LC3B knockout HeLa cell line (KO) untreated (-) or treated (+) with 50uM Chloroquine for 18 hours. PVDF (polyvinylidene difluoride) membrane was probed with 0.1 ug/mL of anti-LC3B monoclonal antibody (Catalog # NBP2-60735) followed by HRP-conjugated Anti-Rabbit IgG Secondary Antibody (Catalog # HAF008). A specific band was detected for LC3B at approximately 15 kDa (as indicated) in the parental HeLa cell line, but is not detectable in the knockout HeLa cell line. GAPDH (Catalog # AF5718) is shown as a loading control. Image from the standard format of this antibody.





Novus Biologicals USA

10730 E. Briarwood Avenue
Centennial, CO 80112
USA
Phone: 303.730.1950
Toll Free: 1.888.506.6887
Fax: 303.730.1966
nb-customerservice@bio-techne.com

Bio-Techne Canada

21 Canmotor Ave
Toronto, ON M8Z 4E6
Canada
Phone: 905.827.6400
Toll Free: 855.668.8722
Fax: 905.827.6402
canada.inquires@bio-techne.com

Bio-Techne Ltd

19 Barton Lane
Abingdon Science Park
Abingdon, OX14 3NB, United Kingdom
Phone: (44) (0) 1235 529449
Free Phone: 0800 37 34 15
Fax: (44) (0) 1235 533420
info.EMEA@bio-techne.com

General Contact Information

www.novusbio.com
Technical Support: nb-technical@bio-
techne.com
Orders: nb-customerservice@bio-techne.com
General: novus@novusbio.com

Products Related to NBP2-80831

HAF008	Goat anti-Rabbit IgG Secondary Antibody [HRP]
NB7160	Goat anti-Rabbit IgG (H+L) Secondary Antibody [HRP]
NBP2-24891	Rabbit IgG Isotype Control
NB100-2220PEP	LC3B Antibody Blocking Peptide

Limitations

This product is for research use only and is not approved for use in humans or in clinical diagnosis. Primary Antibodies are guaranteed for 1 year from date of receipt.

For more information on our 100% guarantee, please visit www.novusbio.com/guarantee

Earn gift cards/discounts by submitting a review: www.novusbio.com/reviews/submit/NBP2-80831

Earn gift cards/discounts by submitting a publication using this product:
www.novusbio.com/publications

