

# Product Datasheet

## LANA2 Antibody (CM-A807) - Azide and BSA Free NBP2-80826

Unit Size: 0.1 ml

Store at 4C short term. Aliquot and store at -20C long term. Avoid freeze-thaw cycles.

[www.novusbio.com](http://www.novusbio.com)



[technical@novusbio.com](mailto:technical@novusbio.com)

Protocols, Publications, Related Products, Reviews, Research Tools and Images at:  
[www.novusbio.com/NBP2-80826](http://www.novusbio.com/NBP2-80826)

Updated 9/9/2025 v.20.1

Earn rewards for product  
reviews and publications.

Submit a publication at [www.novusbio.com/publications](http://www.novusbio.com/publications)

Submit a review at [www.novusbio.com/reviews/destination/NBP2-80826](http://www.novusbio.com/reviews/destination/NBP2-80826)



**NBP2-80826**

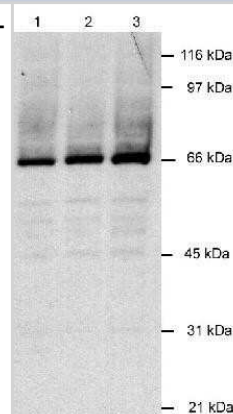
LANA2 Antibody (CM-A807) - Azide and BSA Free

Product Information	
Unit Size	0.1 ml
Concentration	2 mg/ml
Storage	Store at 4C short term. Aliquot and store at -20C long term. Avoid freeze-thaw cycles.
Clonality	Monoclonal
Clone	CM-A807
Preservative	No Preservative
Isotype	IgG1 Kappa
Purity	Protein G purified
Buffer	PBS
Product Description	
Description	Novus Biologicals Knockout (KO) Validated Mouse LANA2 Antibody (CM-A807) - Azide and BSA Free (NB200-167) is a monoclonal antibody validated for use in IHC, WB, ELISA, ICC/IF and IP. All Novus Biologicals antibodies are covered by our 100% guarantee.
Host	Mouse
Species	Human, Mouse, Virus
Reactivity Notes	Reacts with viral LANA2 protein and shows no cross-reactivity to cellular proteins. Also reacts with human and mouse viral KSHV proteins.
Immunogen	Recombinant LANA2 fusion protein.
Product Application Details	
Applications	Western Blot, Immunohistochemistry-Paraffin, ELISA, Immunocytochemistry/Immunofluorescence, Immunohistochemistry, Immunohistochemistry-Frozen, Immunoprecipitation, Knockout Validated
Recommended Dilutions	Western Blot 2-4 ug/ml, ELISA 1:100-1:2000, Immunohistochemistry 1:10-1:500, Immunocytochemistry/ Immunofluorescence 1:10-1:500, Immunoprecipitation 1:10-1:500, Immunohistochemistry-Paraffin 1:10-1:500, Immunohistochemistry-Frozen 1:10-1:500, Knockout Validated
Application Notes	This LANA2 (CM-A807) antibody is useful for ELISA, Immunocytochemistry/Immunofluorescence, Immunohistochemistry on frozen and paraffin-embedded sections, Immunoprecipitation and Western Blot. By Western Blot, this antibody recognizes a viral protein in KSHV infected B-cells (~66-70 kDa).

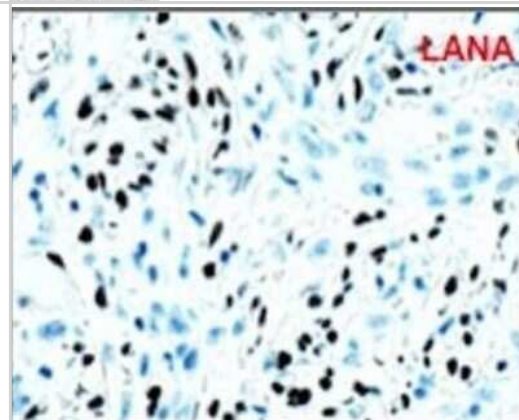


## Images

Western Blot: LANA2 Antibody (CM-A807) - Azide and BSA Free [NBP2-80826] - Detection of LANA2 in infected lysates (30 ug) using 2 ug/ml of NB 200-167. ECL detection 1.5 minutes. Lane 1: BCBL-1 (KSHV+) Lane 2: BC-1 (KSHV+/EBV+) Lane 3: BCP-1 (KSHV+) Image from the standard format of this antibody.



Immunocytochemistry: LANA2 Antibody (CM-A807) - Azide and BSA Free [NBP2-80826] - vIRF3 expression in KS tissues. We obtained KS tissue microarrays from AIDS Cancer Specimen Resource and performed immunohistochemistry, visualized by Aperio F.L. digital pathological scanning. A biopsy sample of KS TMA was stained with anti-LANA. Represe





### **Novus Biologicals USA**

10730 E. Briarwood Avenue  
Centennial, CO 80112  
USA  
Phone: 303.730.1950  
Toll Free: 1.888.506.6887  
Fax: 303.730.1966  
nb-customerservice@bio-techne.com

### **Bio-Techne Canada**

21 Canmotor Ave  
Toronto, ON M8Z 4E6  
Canada  
Phone: 905.827.6400  
Toll Free: 855.668.8722  
Fax: 905.827.6402  
canada.inquires@bio-techne.com

### **Bio-Techne Ltd**

19 Barton Lane  
Abingdon Science Park  
Abingdon, OX14 3NB, United Kingdom  
Phone: (44) (0) 1235 529449  
Free Phone: 0800 37 34 15  
Fax: (44) (0) 1235 533420  
info.EMEA@bio-techne.com

### **General Contact Information**

www.novusbio.com  
Technical Support: nb-technical@bio-techne.com  
Orders: nb-customerservice@bio-techne.com  
General: novus@novusbio.com

### **Products Related to NBP2-80826**

HAF007	Goat anti-Mouse IgG Secondary Antibody [HRP]
NB720-B	Rabbit anti-Mouse IgG (H+L) Secondary Antibody [Biotin]
NBP1-43319-0.5mg	Mouse IgG1 Kappa Isotype Control (P3.6.2.8.1)

### **Limitations**

This product is for research use only and is not approved for use in humans or in clinical diagnosis. Primary Antibodies are guaranteed for 1 year from date of receipt.

For more information on our 100% guarantee, please visit [www.novusbio.com/guarantee](http://www.novusbio.com/guarantee)

Earn gift cards/discounts by submitting a review: [www.novusbio.com/reviews/submit/NBP2-80826](http://www.novusbio.com/reviews/submit/NBP2-80826)

Earn gift cards/discounts by submitting a publication using this product:  
[www.novusbio.com/publications](http://www.novusbio.com/publications)

