

Product Datasheet

LAMP-2/CD107b Antibody (H4B4) - Azide and BSA Free NBP2-80825

Unit Size: 0.1 ml

Store at 4C short term. Aliquot and store at -20C long term. Avoid freeze-thaw cycles.

www.novusbio.com



technical@novusbio.com

Protocols, Publications, Related Products, Reviews, Research Tools and Images at:
www.novusbio.com/NBP2-80825

Updated 4/13/2025 v.20.1

Earn rewards for product
reviews and publications.

Submit a publication at www.novusbio.com/publications

Submit a review at www.novusbio.com/reviews/destination/NBP2-80825



NBP2-80825

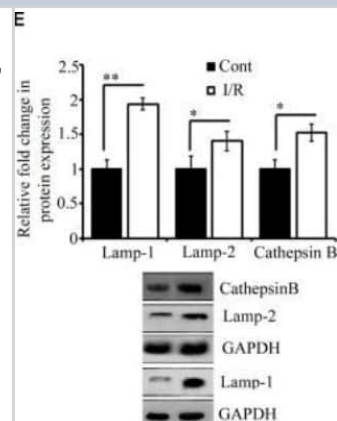
LAMP-2/CD107b Antibody (H4B4) - Azide and BSA Free

Product Information	
Unit Size	0.1 ml
Concentration	1 mg/ml
Storage	Store at 4C short term. Aliquot and store at -20C long term. Avoid freeze-thaw cycles.
Clonality	Monoclonal
Clone	H4B4
Preservative	No Preservative
Isotype	IgG1 Kappa
Purity	Protein G purified
Buffer	PBS
Target Molecular Weight	45 kDa
Product Description	
Host	Mouse
Gene ID	3920
Gene Symbol	LAMP2
Species	Human, Mouse, Chicken, Rat (Negative)
Reactivity Notes	Mouse reactivity reported in scientific literature (PMID: 27863209). Chicken reactivity reported in scientific literature (PMID: 30298003).
Immunogen	LAMP-2/CD107b Antibody (H4B4) was made using a human adherent spleen cells.
Product Application Details	
Applications	Western Blot, Simple Western, ELISA, Flow Cytometry, Immunocytochemistry/Immunofluorescence, Immunohistochemistry, Immunohistochemistry-Frozen, Immunohistochemistry-Paraffin, CyTOF-ready, Knockout Validated
Recommended Dilutions	Western Blot 1:1000, Simple Western 1:25, Flow Cytometry 1 ug per million cells, ELISA, Immunohistochemistry 1:100 - 1:200, Immunocytochemistry/Immunofluorescence 1:10-1:100, Immunohistochemistry-Paraffin 1:100 - 1:200, Immunohistochemistry-Frozen 1:100 - 1:200, CyTOF-ready, Knockout Validated
Application Notes	<p>In Western blot, bands may be seen at ~40 kDa and 45 kDa representing the unglycosylated isoforms of LAMP2 and ~110 kDa representing the glycosylated form.</p> <p>In Simple Western only 10 - 15 ul of the recommended dilution is used per data point.</p> <p>See Simple Western Antibody Database for Simple Western validation: antibody dilution of 1:25. Separated by Size-Wes, Sally Sue/Peggy Sue. This antibody is CyTOF ready.</p>

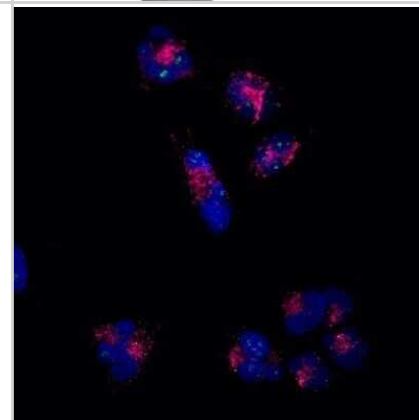


Images

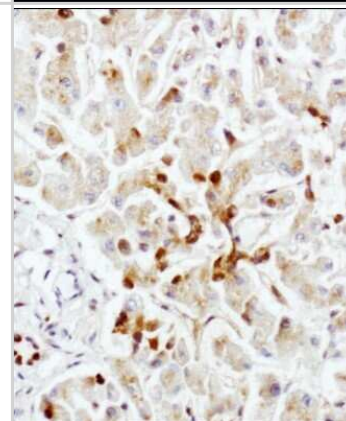
Western Blot: LAMP-2/CD107b Antibody (H4B4) - Azide and BSA Free [NBP2-80825] - Representative pictures of effect of I/R on DNA damage, cell survival, and inflammation. Western blot analysis expression level of Cathepsin B (*P < 0.05) in total protein extract from RVA of I/R treated vs. control group. Image collected and cropped by CiteAb from the following publication (<https://www.frontiersin.org/article/10.3389/fphar.2018.01034/full>), licensed under a CC-BY license. Image from the standard format of this antibody.



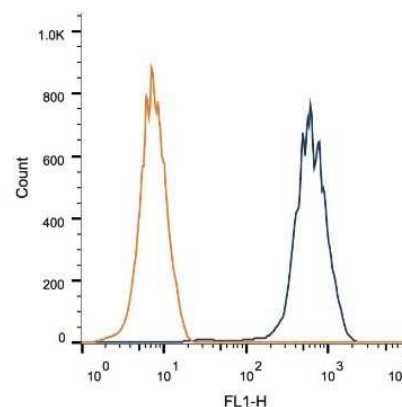
Immunocytochemistry/Immunofluorescence: LAMP-2/CD107b Antibody (H4B4) - Azide and BSA Free [NBP2-80825] - T98G glioblastoma cells grown on #1.5 coverglass stained with a conjugated LAMP-2/CD107b (H4B4)AF647 antibody, counterstained with DAPI. Cathepsin D (green) staining also visible. This image was submitted via customer Review. Image using the Alexa Fluor 647 form of this antibody.



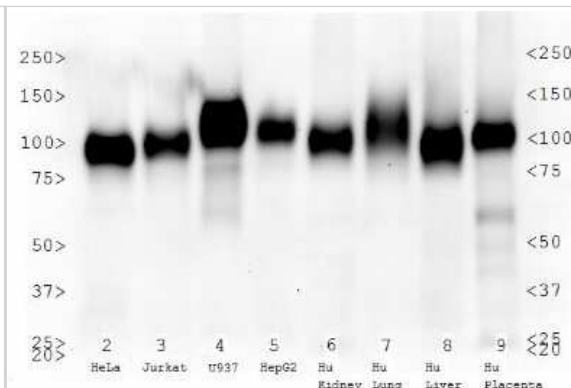
Immunohistochemistry: LAMP-2/CD107b Antibody (H4B4) - Azide and BSA Free [NBP2-80825] - Staining of LAMP-2/CD107b in human liver using DAB with hematoxylin counterstain. Image from the standard format of this antibody.



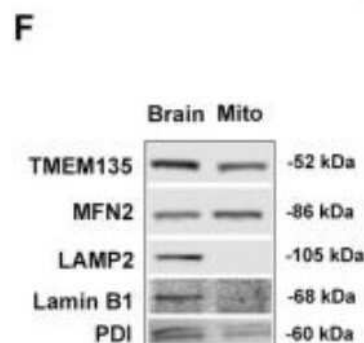
Flow Cytometry: LAMP-2/CD107b Antibody (H4B4) - Azide and BSA Free [NBP2-80825] - Intracellular flow cytometric staining of 1×10^6 HEK-293 cells using anti-LAMP-2/CD107b (dark blue). Isotype control shown in orange. An antibody concentration of $1 \mu\text{g}/1 \times 10^6$ cells was used. Image from the standard format of this antibody.



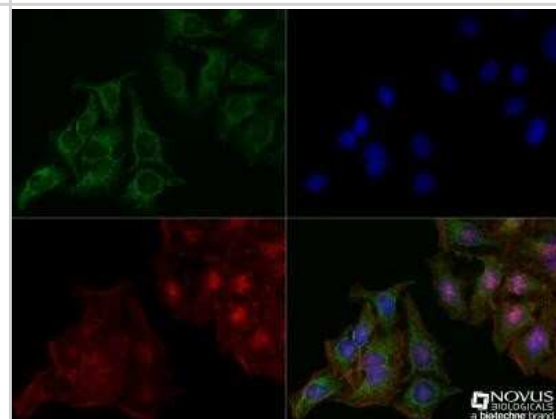
Western Blot: LAMP-2/CD107b Antibody (H4B4) - Azide and BSA Free [NBP2-80825] - Analysis of LAMP-2/CD107b expression in Whole Cell Lysates: 2) HeLa, 3) Jurkat, 4) U937, 5) HepG2, Tissue Extracts: 6) Human kidney, 7) Human lung, 8) Human liver, and 9) Human placenta. Image from the standard format of this antibody.



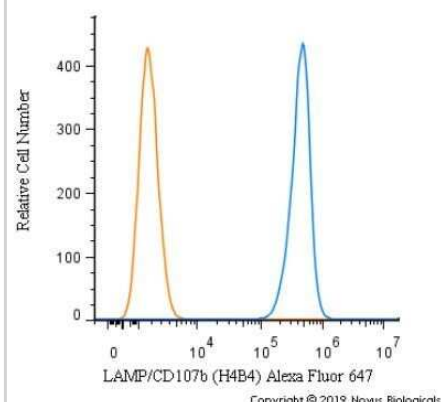
Western Blot: LAMP-2/CD107b Antibody (H4B4) - Azide and BSA Free [NBP2-80825] - Localization of TMEM135 to the mitochondria. The mitochondrial fraction isolated from the WT mouse brain show TMEM135 signals by immunoblotting. Following proteins were used as organelle markers: MFN2-mitochondria; LAMP2-lysosome; Lamin B1- nucleus; PDI- endoplasmic reticulum (ER). Image collected and cropped by CiteAb from the following publication (<https://elifesciences.org/articles/19264>), licensed under a CC-BY license. Image from the standard format of this antibody.



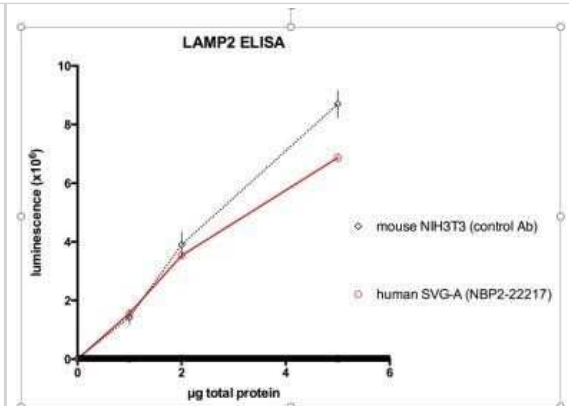
Immunocytochemistry/Immunofluorescence: LAMP-2/CD107b Antibody (H4B4) - Azide and BSA Free [NBP2-80825] - HeLa cells were fixed for 10 minutes using 10% formalin and then permeabilized for 5 minutes using 1X TBS + 0.5% Triton X-100. The cells were incubated with anti-LAMP-2/CD107b [NBP2-22217] at a 1:100 dilution overnight at 4C and detected with an anti-mouse Dylight 488 (Green) at a 1:500 dilution. Actin was detected with Phalloidin 568 (Red) at a 1:200 dilution. Nuclei were counterstained with DAPI (Blue). Cells were imaged using a 40X objective. Image from the standard format of this antibody.



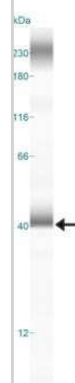
Flow Cytometry: LAMP-2/CD107b Antibody (H4B4) - Azide and BSA Free [NBP2-80825] - An intracellular stain was performed on U937 cells with HGF LAMP-2/CD107b [H4B4] Antibody NBP2-22217AF647 (blue) and a matched isotype control (orange). Cells were fixed with 4% PFA and then permeabilized with 0.1% saponin. Cells were incubated in an antibody dilution of 2.5 ug/mL for 30 minutes at room temperature. Both antibodies were directly conjugated to Alexa Fluor 647.



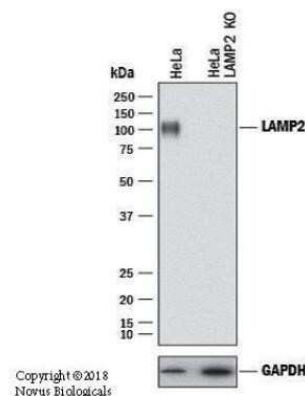
ELISA: LAMP-2/CD107b Antibody (H4B4) - Azide and BSA Free [NBP2-80825] - Anti-LAMP-2/CD107b was used to assess lysates from human SVG-A cells via ELISA, by loading the indicated mass of total protein per well. Antibodies tested were diluted 1:250, and used in conjunction with an HRP-conjugated secondary antibody. Signal was detected by luminescence. Image from verified customer review. Image from the standard format of this antibody.



Simple Western: LAMP-2/CD107b Antibody (H4B4) - Azide and BSA Free [NBP2-80825] - Lane view shows a specific band for LAMP-2/CD107b in 1.0 mg/ml of HeLa lysate. This experiment was performed under reducing conditions using the 12-230 kDa separation system. Image from the standard format of this antibody.



Western Blot: LAMP-2/CD107b Antibody (H4B4) - Azide and BSA Free [NBP2-80825] - Lysates of HeLa human cervical epithelial carcinoma parental cell line and LAMP2 knockout (KO) HeLa cell line. PVDF membrane was probed with Mouse Anti-Human LAMP-2/CD107b (H4B4) Monoclonal Antibody (Catalog # NBP2-22217) followed by HRP-conjugated Anti-Rabbit IgG Secondary Antibody (Catalog #HAF008). Specific band was detected for LAMP-2/CD107b at approximately 100 kDa (as indicated) in the parental HeLa cell line, but is not detectable in the knockout HeLa cell line. This experiment was conducted under reducing conditions. Image from the standard format of this antibody.





Novus Biologicals USA

10730 E. Briarwood Avenue
Centennial, CO 80112
USA
Phone: 303.730.1950
Toll Free: 1.888.506.6887
Fax: 303.730.1966
nb-customerservice@bio-techne.com

Bio-Techne Canada

21 Canmotor Ave
Toronto, ON M8Z 4E6
Canada
Phone: 905.827.6400
Toll Free: 855.668.8722
Fax: 905.827.6402
canada.inquires@bio-techne.com

Bio-Techne Ltd

19 Barton Lane
Abingdon Science Park
Abingdon, OX14 3NB, United Kingdom
Phone: (44) (0) 1235 529449
Free Phone: 0800 37 34 15
Fax: (44) (0) 1235 533420
info.EMEA@bio-techne.com

General Contact Information

www.novusbio.com
Technical Support: nb-technical@bio-techne.com
Orders: nb-customerservice@bio-techne.com
General: novus@novusbio.com

Products Related to NBP2-80825

HAF007	Goat anti-Mouse IgG Secondary Antibody [HRP]
NB720-B	Rabbit anti-Mouse IgG (H+L) Secondary Antibody [Biotin]
NBP1-43319-0.5mg	Mouse IgG1 Kappa Isotype Control (P3.6.2.8.1)
NBP2-50563-50ug	Recombinant Mouse LAMP-2/CD107b His Protein

Limitations

This product is for research use only and is not approved for use in humans or in clinical diagnosis. Primary Antibodies are guaranteed for 1 year from date of receipt.

For more information on our 100% guarantee, please visit www.novusbio.com/guarantee

Earn gift cards/discounts by submitting a review: www.novusbio.com/reviews/submit/NBP2-80825

Earn gift cards/discounts by submitting a publication using this product:
www.novusbio.com/publications

