

# Product Datasheet

## Glucose 6 Phosphate Dehydrogenase Antibody (2H7) - Azide and BSA Free NBP2-80752

Unit Size: 0.1 ml

Store at 4C short term. Aliquot and store at -20C long term. Avoid freeze-thaw cycles.

[www.novusbio.com](http://www.novusbio.com)



[technical@novusbio.com](mailto:technical@novusbio.com)

Protocols, Publications, Related Products, Reviews, Research Tools and Images at:  
[www.novusbio.com/NBP2-80752](http://www.novusbio.com/NBP2-80752)

Updated 9/9/2025 v.20.1

Earn rewards for product  
reviews and publications.

Submit a publication at [www.novusbio.com/publications](http://www.novusbio.com/publications)

Submit a review at [www.novusbio.com/reviews/destination/NBP2-80752](http://www.novusbio.com/reviews/destination/NBP2-80752)



**NBP2-80752****Glucose 6 Phosphate Dehydrogenase Antibody (2H7) - Azide and BSA Free**

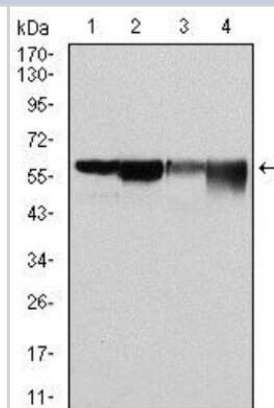
<b>Product Information</b>	
<b>Unit Size</b>	0.1 ml
<b>Concentration</b>	1 mg/ml
<b>Storage</b>	Store at 4C short term. Aliquot and store at -20C long term. Avoid freeze-thaw cycles.
<b>Clonality</b>	Monoclonal
<b>Clone</b>	2H7
<b>Preservative</b>	No Preservative
<b>Isotype</b>	IgG1
<b>Purity</b>	Ammonium sulfate precipitation
<b>Buffer</b>	PBS
<b>Target Molecular Weight</b>	59 kDa

<b>Product Description</b>	
<b>Description</b>	Novus Biologicals Mouse Glucose 6 Phosphate Dehydrogenase Antibody (2H7) - Azide and BSA Free (NBP2-22125) is a monoclonal antibody validated for use in IHC, WB, ELISA and Flow. All Novus Biologicals antibodies are covered by our 100% guarantee.
<b>Host</b>	Mouse
<b>Gene ID</b>	2539
<b>Gene Symbol</b>	G6PD
<b>Species</b>	Human
<b>Immunogen</b>	Purified recombinant fragment of human Glucose 6 Phosphate Dehydrogenase expressed in E. coli. [Uniprot: P11413]

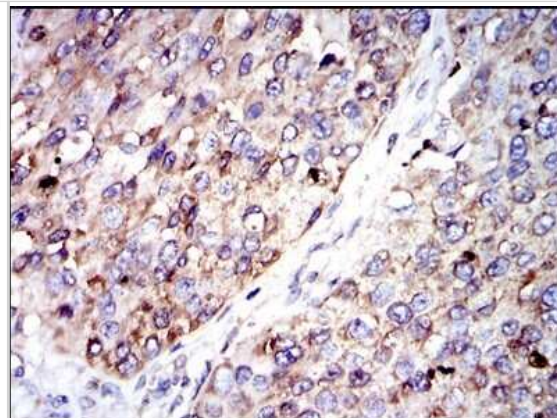
<b>Product Application Details</b>	
<b>Applications</b>	Western Blot, Immunohistochemistry-Paraffin, ELISA, Flow Cytometry, Immunohistochemistry, CyTOF-ready
<b>Recommended Dilutions</b>	Western Blot 1:500-1:1000, Flow Cytometry 1:200-1:400, ELISA 1:10000, Immunohistochemistry, Immunohistochemistry-Paraffin 1:200-1:1000, CyTOF-ready

**Images**

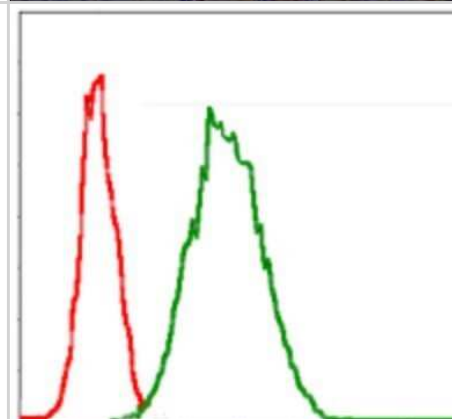
Western Blot: Glucose 6 Phosphate Dehydrogenase Antibody (2H7) - Azide and BSA Free [NBP2-80752] - Analysis using Glucose 6 Phosphate Dehydrogenase mouse mAb against Hela (1), MCF-7 (2), Jurkat (3) and K562 (4) cell lysates. Image from the standard format of this antibody.



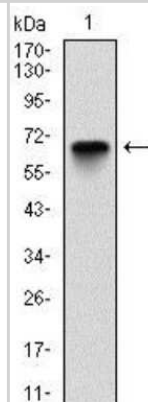
Immunohistochemistry-Paraffin: Glucose 6 Phosphate Dehydrogenase Antibody (2H7) - Azide and BSA Free [NBP2-80752] - Analysis of paraffin-embedded kidney cancer tissues using Glucose 6 Phosphate Dehydrogenase mouse mAb with DAB staining. Image from the standard format of this antibody.



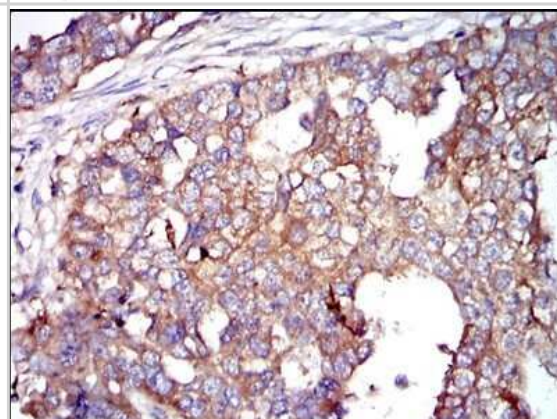
Flow Cytometry: Glucose 6 Phosphate Dehydrogenase Antibody (2H7) - Azide and BSA Free [NBP2-80752] - Analysis of Jurkat cells using Glucose 6 Phosphate Dehydrogenase mouse mAb (green) and negative control (red). Image from the standard format of this antibody.



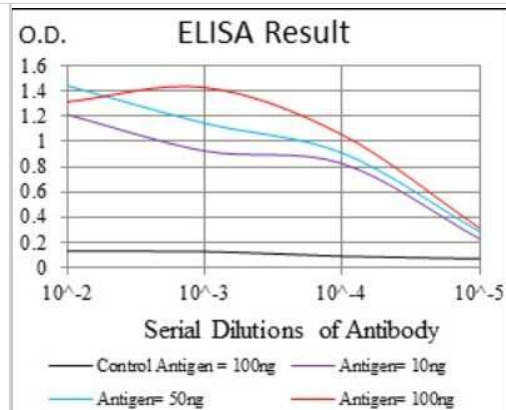
Western Blot: Glucose 6 Phosphate Dehydrogenase Antibody (2H7) - Azide and BSA Free [NBP2-80752] - Analysis using Glucose 6 Phosphate Dehydrogenase mAb against human Glucose 6 Phosphate Dehydrogenase (AA: 275-515) recombinant protein. (Expected MW is 53.1 kDa) Image from the standard format of this antibody.



Immunohistochemistry-Paraffin: Glucose 6 Phosphate Dehydrogenase Antibody (2H7) - Azide and BSA Free [NBP2-80752] - Analysis of paraffin-embedded breast cancer tissues using Glucose 6 Phosphate Dehydrogenase mouse mAb with DAB staining. Image from the standard format of this antibody.



ELISA: Glucose 6 Phosphate Dehydrogenase Antibody (2H7) - Azide and BSA Free [NBP2-80752] - Red: Control Antigen (100ng), Purple: Antigen (10ng), Green: Antigen (50ng), Blue: Antigen (100ng). Image from the standard format of this antibody.





### **Novus Biologicals USA**

10730 E. Briarwood Avenue  
Centennial, CO 80112  
USA  
Phone: 303.730.1950  
Toll Free: 1.888.506.6887  
Fax: 303.730.1966  
nb-customerservice@bio-techne.com

### **Bio-Techne Canada**

21 Canmotor Ave  
Toronto, ON M8Z 4E6  
Canada  
Phone: 905.827.6400  
Toll Free: 855.668.8722  
Fax: 905.827.6402  
canada.inquires@bio-techne.com

### **Bio-Techne Ltd**

19 Barton Lane  
Abingdon Science Park  
Abingdon, OX14 3NB, United Kingdom  
Phone: (44) (0) 1235 529449  
Free Phone: 0800 37 34 15  
Fax: (44) (0) 1235 533420  
info.EMEA@bio-techne.com

### **General Contact Information**

[www.novusbio.com](http://www.novusbio.com)  
Technical Support: nb-technical@bio-techne.com  
Orders: nb-customerservice@bio-techne.com  
General: novus@novusbio.com

### **Products Related to NBP2-80752**

---

HAF007	Goat anti-Mouse IgG Secondary Antibody [HRP]
NB720-B	Rabbit anti-Mouse IgG (H+L) Secondary Antibody [Biotin]
NBP1-97005-0.5mg	Mouse IgG1 Isotype Control (MG1)
NBC1-19064	Recombinant E. coli Glucose 6 Phosphate Dehydrogenase Protein

---

### **Limitations**

This product is for research use only and is not approved for use in humans or in clinical diagnosis. Primary Antibodies are guaranteed for 1 year from date of receipt.

For more information on our 100% guarantee, please visit [www.novusbio.com/guarantee](http://www.novusbio.com/guarantee)

Earn gift cards/discounts by submitting a review: [www.novusbio.com/reviews/submit/NBP2-80752](http://www.novusbio.com/reviews/submit/NBP2-80752)

Earn gift cards/discounts by submitting a publication using this product:  
[www.novusbio.com/publications](http://www.novusbio.com/publications)

