

# Product Datasheet

## CD68/SR-D1 Antibody (KP1) - Azide and BSA Free NBP2-80655

Unit Size: 0.1 mg

Store at 4C. Do not freeze.

[www.novusbio.com](http://www.novusbio.com)



[technical@novusbio.com](mailto:technical@novusbio.com)

Protocols, Publications, Related Products, Reviews, Research Tools and Images at:  
[www.novusbio.com/NBP2-80655](http://www.novusbio.com/NBP2-80655)

Updated 3/25/2021 v.20.1

Earn rewards for product  
reviews and publications.

Submit a publication at [www.novusbio.com/publications](http://www.novusbio.com/publications)

Submit a review at [www.novusbio.com/reviews/destination/NBP2-80655](http://www.novusbio.com/reviews/destination/NBP2-80655)



**NBP2-80655**

CD68/SR-D1 Antibody (KP1) - Azide and BSA Free

Product Information	
Unit Size	0.1 mg
Concentration	1 mg/ml
Storage	Store at 4C. Do not freeze.
Clonality	Monoclonal
Clone	KP1
Preservative	No Preservative
Isotype	IgG1 Kappa
Purity	Protein A or G purified
Buffer	PBS

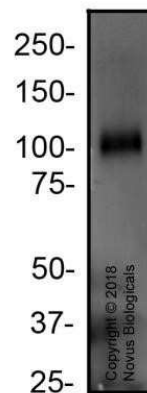
Product Description	
Host	Mouse
Gene ID	968
Gene Symbol	CD68
Species	Human, Mouse, Rat
Reactivity Notes	Rat reactivity reported in scientific literature (PMID: 25058444)
Specificity/Sensitivity	Rat reactivity reported in scientific literature (PMID: 25058444)
Immunogen	This CD68/SR-D1 Antibody (KP1) was developed against subcellular fraction of human alveolar macrophages.

Product Application Details	
Applications	Western Blot, Flow Cytometry, Immunocytochemistry/ Immunofluorescence, Immunohistochemistry, Immunohistochemistry-Frozen, Immunohistochemistry-Paraffin, Immunoprecipitation, CyTOF-ready
Recommended Dilutions	Western Blot 2 ug/ml, Flow Cytometry, Immunohistochemistry, Immunocytochemistry/ Immunofluorescence, Immunoprecipitation, Immunohistochemistry-Paraffin, Immunohistochemistry-Frozen, CyTOF-ready
Application Notes	This CD68 Antibody (KP1) is useful for Immunohistochemistry on frozen fixed and paraffin-embedded sections, Immunoprecipitation, Western blot and ICC/IF. IHC: For an ABC system, dilute 1:20 and incubate for 30-60 minutes at RT. Formalin fixed paraffin embedded tissue sections require high temperature antigen unmasking with 10 mM citrate buffer, pH 6.0 prior to immunostaining. Use in Flow Cytometry reported in scientific literature (PMID: 18405323)

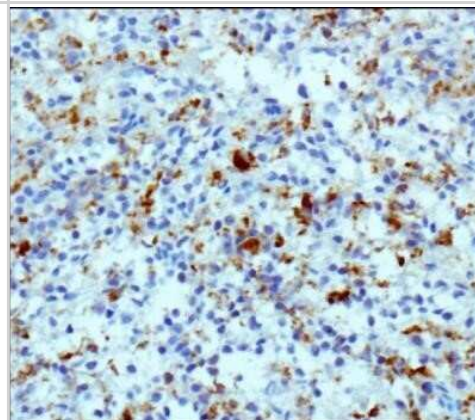


## Images

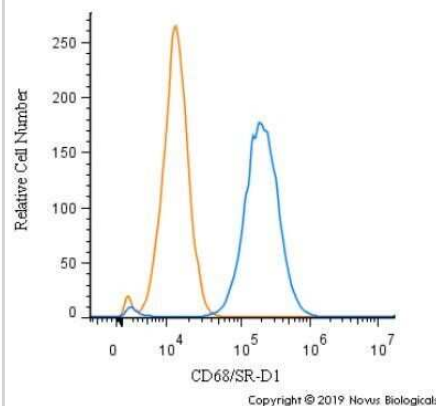
**Western Blot: CD68/SR-D1 Antibody (KP1) - Azide and BSA Free [NBP2-80655]** - Total protein from human spleen was separated on a 7.5% gel by SDS-PAGE, transferred to PVDF membrane and blocked in 5% non-fat milk in TBST. The membrane was probed with 1:50 anti-CD68 in 5% non-fat milk in TBST and detected with an anti-mouse HRP secondary antibody using chemiluminescence. Image using the standard format of this product.



**Immunohistochemistry-Paraffin: CD68/SR-D1 Antibody (KP1) - Azide and BSA Free [NBP2-80655]** - Analysis of a FFPE human spleen tissue section using 1:10 dilution of CD68/SR-D1 antibody (clone KP1) with HRP-DAB based detection method and hematoxylin counterstaining. The antibody specifically labelled the macrophage cells in the tested section. Image using the standard format of this product.



**Flow Cytometry: CD68/SR-D1 Antibody (KP1) - Azide and BSA Free [NBP2-80655]** - An intracellular stain was performed on THP-1 cells with CD68/SR-D1 Antibody NB100-683 (blue) and a matched isotype control (orange). Cells were fixed with 4% PFA and then permeabilized with 0.1% saponin. Cells were incubated in an antibody dilution of 1:50 for 30 minutes at room temperature, followed by Mouse IgG (H+L) Cross-Adsorbed Secondary Antibody. Image using the standard format of this product.





### **Novus Biologicals USA**

10730 E. Briarwood Avenue  
Centennial, CO 80112  
USA  
Phone: 303.730.1950  
Toll Free: 1.888.506.6887  
Fax: 303.730.1966  
nb-customerservice@bio-techne.com

### **Bio-Techne Canada**

21 Canmotor Ave  
Toronto, ON M8Z 4E6  
Canada  
Phone: 905.827.6400  
Toll Free: 855.668.8722  
Fax: 905.827.6402  
canada.inquires@bio-techne.com

### **Bio-Techne Ltd**

19 Barton Lane  
Abingdon Science Park  
Abingdon, OX14 3NB, United Kingdom  
Phone: (44) (0) 1235 529449  
Free Phone: 0800 37 34 15  
Fax: (44) (0) 1235 533420  
info.EMEA@bio-techne.com

### **General Contact Information**

www.novusbio.com  
Technical Support: nb-technical@bio-  
techne.com  
Orders: nb-customerservice@bio-techne.com  
General: novus@novusbio.com

### **Limitations**

This product is for research use only and is not approved for use in humans or in clinical diagnosis. Primary Antibodies are guaranteed for 1 year from date of receipt.

For more information on our 100% guarantee, please visit [www.novusbio.com/guarantee](http://www.novusbio.com/guarantee)

Earn gift cards/discounts by submitting a review: [www.novusbio.com/reviews/submit/NBP2-80655](http://www.novusbio.com/reviews/submit/NBP2-80655)

Earn gift cards/discounts by submitting a publication using this product:  
[www.novusbio.com/publications](http://www.novusbio.com/publications)

