

# Product Datasheet

## CCR2 Antibody (2D8) - Azide and BSA Free NBP2-80622

Unit Size: 0.1 mg

Store at 4C short term. Aliquot and store at -20C long term. Avoid freeze-thaw cycles.

[www.novusbio.com](http://www.novusbio.com)



[technical@novusbio.com](mailto:technical@novusbio.com)

Protocols, Publications, Related Products, Reviews, Research Tools and Images at:  
[www.novusbio.com/NBP2-80622](http://www.novusbio.com/NBP2-80622)

Updated 9/1/2020 v.20.1

Earn rewards for product  
reviews and publications.

Submit a publication at [www.novusbio.com/publications](http://www.novusbio.com/publications)

Submit a review at [www.novusbio.com/reviews/destination/NBP2-80622](http://www.novusbio.com/reviews/destination/NBP2-80622)



**NBP2-80622**

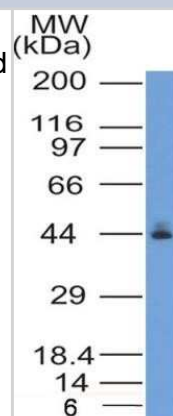
CCR2 Antibody (2D8) - Azide and BSA Free

Product Information	
Unit Size	0.1 mg
Concentration	1 mg/ml
Storage	Store at 4C short term. Aliquot and store at -20C long term. Avoid freeze-thaw cycles.
Clonality	Monoclonal
Clone	2D8
Preservative	No Preservative
Isotype	IgG2b Lambda
Purity	Protein G purified
Buffer	PBS
Product Description	
Host	Mouse
Gene ID	729230
Gene Symbol	CCR2
Species	Human
Immunogen	A synthetic peptide made to an N-terminal portion of the human CCR2 protein (between residues 1-100) [Uniprot: P41597]
Product Application Details	
Applications	Western Blot, Immunohistochemistry, Immunohistochemistry-Paraffin
Recommended Dilutions	Western Blot 2 ug/ml, Immunohistochemistry 5 ug/ml, Immunohistochemistry-Paraffin 5 ug/ml

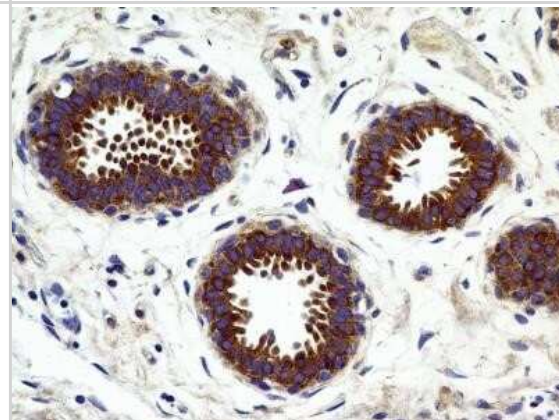


## Images

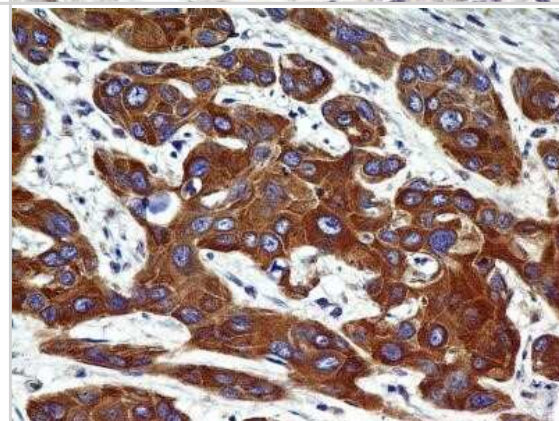
Western Blot: CCR2 Antibody (2D8) - Azide and BSA Free [NBP2-80622] - Analysis of CCR2 [2D8] in Molt4 lysate Image from the standard format of this antibody.



Immunohistochemistry-Paraffin: CCR2 Antibody (2D8) - Azide and BSA Free [NBP2-80622] - Analysis of FFPE tissue section of human breast using CCR2 antibody (clone 2D8) at 5 ug/ml concentration. The glandular cells in the lobules showed a specific cytoplasmic-membranous immunostaining, whereas, the inter-lobular connective tissue did not deve



Immunohistochemistry-Paraffin: CCR2 Antibody (2D8) - Azide and BSA Free [NBP2-80622] - Analysis of FFPE tissue section of human esophageal squamous cell carcinoma (SCC) using CCR2 antibody (clone 2D8) at 5 ug/ml concentration. The cancer cells depicted strong cytoplasmic-membranous immunostaining, whereas the cells of tumor stroma were larg





### **Novus Biologicals USA**

10730 E. Briarwood Avenue  
Centennial, CO 80112  
USA  
Phone: 303.730.1950  
Toll Free: 1.888.506.6887  
Fax: 303.730.1966  
nb-customerservice@bio-techne.com

### **Bio-Techne Canada**

21 Canmotor Ave  
Toronto, ON M8Z 4E6  
Canada  
Phone: 905.827.6400  
Toll Free: 855.668.8722  
Fax: 905.827.6402  
canada.inquires@bio-techne.com

### **Bio-Techne Ltd**

19 Barton Lane  
Abingdon Science Park  
Abingdon, OX14 3NB, United Kingdom  
Phone: (44) (0) 1235 529449  
Free Phone: 0800 37 34 15  
Fax: (44) (0) 1235 533420  
info.EMEA@bio-techne.com

### **General Contact Information**

www.novusbio.com  
Technical Support: nb-technical@bio-techne.com  
Orders: nb-customerservice@bio-techne.com  
General: novus@novusbio.com

### **Products Related to NBP2-80622**

---

HAF007	Goat anti-Mouse IgG Secondary Antibody [HRP]
NB720-B	Rabbit anti-Mouse IgG (H+L) Secondary Antibody [Biotin]
NBP1-48338PEP	CCR2 Antibody Blocking Peptide
210-TA-005	TNF-alpha [Unconjugated]

---

### **Limitations**

This product is for research use only and is not approved for use in humans or in clinical diagnosis. Primary Antibodies are guaranteed for 1 year from date of receipt.

For more information on our 100% guarantee, please visit [www.novusbio.com/guarantee](http://www.novusbio.com/guarantee)

Earn gift cards/discounts by submitting a review: [www.novusbio.com/reviews/submit/NBP2-80622](http://www.novusbio.com/reviews/submit/NBP2-80622)

Earn gift cards/discounts by submitting a publication using this product:  
[www.novusbio.com/publications](http://www.novusbio.com/publications)

