

# Product Datasheet

## alpha Tubulin Antibody (YL1/2) - Azide and BSA Free NBP2-80571

Unit Size: 0.1 ml

Store at 4C short term. Aliquot and store at -20C long term. Avoid freeze-thaw cycles.

[www.novusbio.com](http://www.novusbio.com)



[technical@novusbio.com](mailto:technical@novusbio.com)

Protocols, Publications, Related Products, Reviews, Research Tools and Images at:  
[www.novusbio.com/NBP2-80571](http://www.novusbio.com/NBP2-80571)

Updated 11/11/2025 v.20.1

Earn rewards for product  
reviews and publications.

Submit a publication at [www.novusbio.com/publications](http://www.novusbio.com/publications)

Submit a review at [www.novusbio.com/reviews/destination/NBP2-80571](http://www.novusbio.com/reviews/destination/NBP2-80571)



**NBP2-80571**

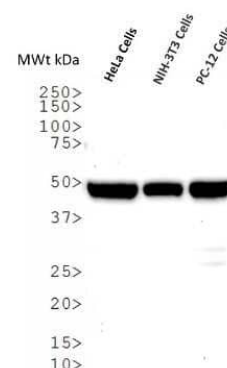
alpha Tubulin Antibody (YL1/2) - Azide and BSA Free

Product Information	
Unit Size	0.1 ml
Concentration	1 mg/ml
Storage	Store at 4C short term. Aliquot and store at -20C long term. Avoid freeze-thaw cycles.
Clonality	Monoclonal
Clone	YL1/2
Preservative	No Preservative
Isotype	IgG2a
Purity	Protein G purified
Buffer	PBS
Target Molecular Weight	50 kDa
Product Description	
Description	Novus Biologicals Rat alpha Tubulin Antibody (YL1/2) - Azide and BSA Free (NB600-506) is a monoclonal antibody validated for use in IHC, WB, ELISA, Flow, ICC/IF and IP. All Novus Biologicals antibodies are covered by our 100% guarantee.
Host	Rat
Gene ID	7846
Gene Symbol	TUBA1A
Species	Human, Mouse, Rat, Avian, C. elegans, Drosophila, Invertebrate, Mammal, Monkey, Primate, Yeast
Reactivity Notes	S. cerevisiae, S. pombe, Slime molds, Allium. Other species have not been tested. Expected to react with most eukaryotes due to sequence identity. Drosophila reactivity reported in scientific literature (PMID: 24019759). C. elegans reactivity reported in scientific literature (PMID: 29118344). Toxoplasma gondii reactivity reported by customer review.
Immunogen	This alpha Tubulin Antibody (YL1/2) was developed against full length native protein (purified) (S. cerevisiae).
Product Application Details	
Applications	Western Blot, Immunohistochemistry-Paraffin, ELISA, Flow Cytometry, Immunocytochemistry/ Immunofluorescence, Immunohistochemistry, Immunohistochemistry-Frozen, Immunoprecipitation, Radioimmunoassay, CyTOF-ready
Recommended Dilutions	Western Blot 1:5000-1:10000, Flow Cytometry 2-5 ug/0.1x10 <sup>6</sup> cells, ELISA 1:100-1:1000, Immunohistochemistry 1:200, Immunocytochemistry/ Immunofluorescence 1:1000-1:10000, Immunoprecipitation 1:10-1:500, Immunohistochemistry-Paraffin 1:200, Immunohistochemistry-Frozen 1:200, Radioimmunoassay, CyTOF-ready
Application Notes	This Tubulin Antibody (YL1/2) is useful for Western blot, Immunoprecipitation, Immunohistochemistry on frozen and paraffin-embedded sections, Immunocytochemistry/Immunofluorescence, Radioimmunoassay and ELISA. NB600-506 is ideal for use as a Western blot loading control, where a band can be seen around 50-55 kDa and as a cytoskeletal marker in Immunocytochemistry.

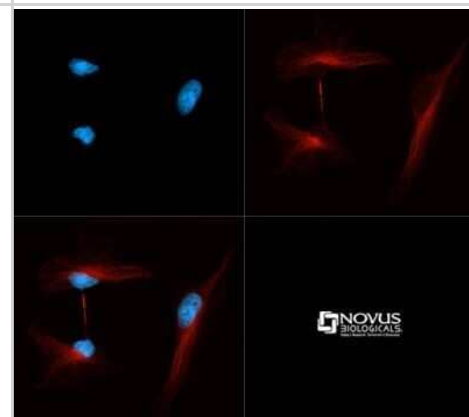


## Images

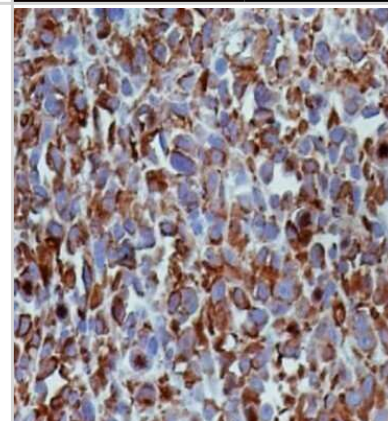
**Western Blot: alpha Tubulin Antibody (YL1/2) - Azide and BSA Free [NBP2-80571]** - Western Blot analysis of whole cell lysates of HeLa, NIH-3T3 and PC-12 cell lines using Tubulin antibody (clone YL1/2). Alpha tubulin molecular weight: 50 kDa. Image from the standard format of this antibody.



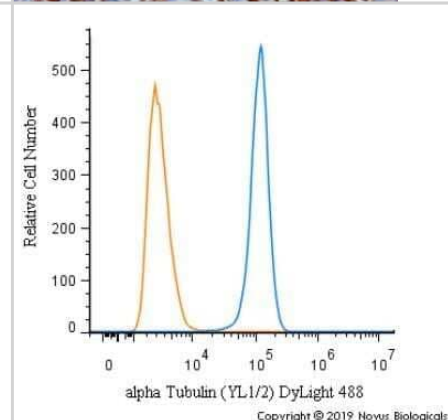
**Immunocytochemistry/Immunofluorescence: alpha Tubulin Antibody (YL1/2) - Azide and BSA Free [NBP2-80571]** - Tubulin YL1/2 antibody was tested in HeLa cells with Dylight 550 (red). Nuclei were counterstained with DAPI (blue). Image from the standard format of this antibody.



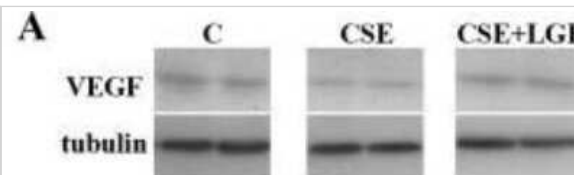
**Immunohistochemistry: alpha Tubulin Antibody (YL1/2) - Azide and BSA Free [NBP2-80571]** - Tubulin antibody was tested in human breast cancer xenograft using DAB with hematoxylin counterstain. Image from the standard format of this antibody.



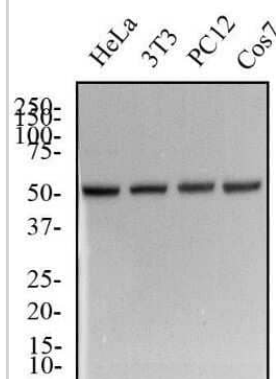
**Flow Cytometry: alpha Tubulin Antibody (YL1/2) - Azide and BSA Free [NBP2-80571]** - An intracellular stain was performed on SH-SY5Y cells with alpha Tubulin (YL1/2) Antibody NB600-506G (blue) and a matched isotype control (orange). Cells were fixed with 4% PFA and then permeabilized with 0.1% saponin. Cells were incubated in an antibody dilution of 5 ug/mL for 30 minutes at room temperature. Both antibodies were directly conjugated to DyLight 488.



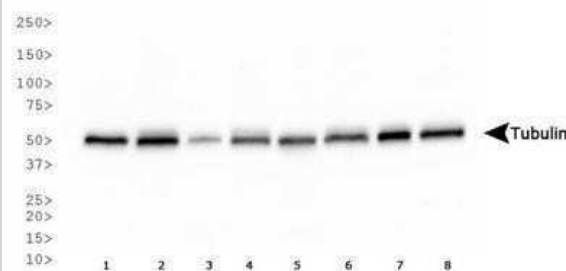
Western Blot: alpha Tubulin Antibody (YL1/2) - Azide and BSA Free [NBP2-80571] - Tissue levels of VEGF and PCNA. VEGF levels were estimated by western blot. Image collected and cropped by CiteAb from the following publication (<https://dx.plos.org/10.1371/journal.pone.0112995>), licensed under a CC-BY license. Image from the standard format of this antibody.



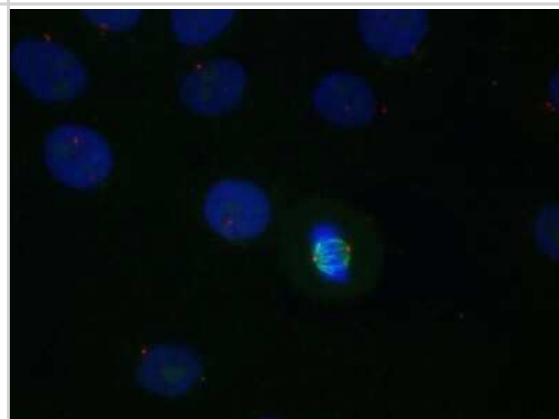
Western Blot: alpha Tubulin Antibody (YL1/2) - Azide and BSA Free [NBP2-80571] - Total protein from human HeLa, mouse 3T3, rat PC12 and African green monkey Cos7 cell lines was separated on a 12% gel by SDS-PAGE, transferred to PVDF membrane and blocked in 5% non-fat milk in TBST. The membrane was probed with a 1:6000 dilution of anti-Tubulin (YL 1/2) in 1% non-fat milk in TBST and detected with an anti-rat HRP secondary antibody using chemiluminescence. Alpha tubulin molecular weight: 50 kDa. Image from the standard format of this antibody.



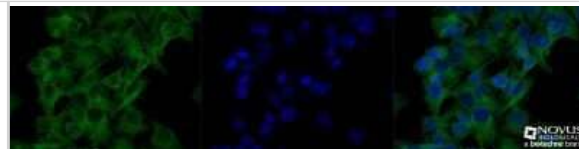
Western Blot: alpha Tubulin Antibody (YL1/2) - Azide and BSA Free [NBP2-80571] - Western blot analysis of alpha Tubulin (molecular weight: 50 kDa) expression in 1) HeLa, 2) NTERA-2, 3) A431, 4) HepG2, 5) MCF7, 6) NIH-3T3, 7) PC-12 and 8) Cos 7 whole cell lysates using NB600-506. Image from the standard format of this antibody.



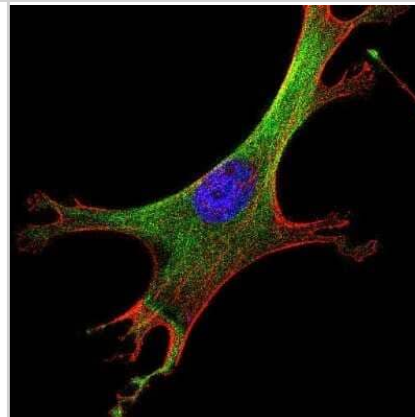
Immunocytochemistry/Immunofluorescence: alpha Tubulin Antibody (YL1/2) - Azide and BSA Free [NBP2-80571] - B-Tubulin staining (488) and Pericentrin (594) in Mitotic Cell. Image from verified customer review. Image from the standard format of this antibody.



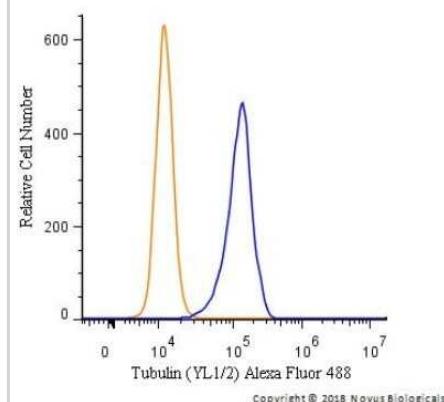
Immunocytochemistry/Immunofluorescence: alpha Tubulin Antibody (YL1/2) - Azide and BSA Free [NBP2-80571] - HeLa cells were fixed and permeabilized for 10 minutes using -20C MeOH. The cells were incubated with anti-Tubulin (YL1/2) at a 1:200 dilution overnight at 4C and detected with an anti-rat Dylight 488 (Green) at a 1:500 dilution. Nuclei were counterstained with DAPI (Blue). Cells were imaged using a 40X objective. Image from the standard format of this antibody.



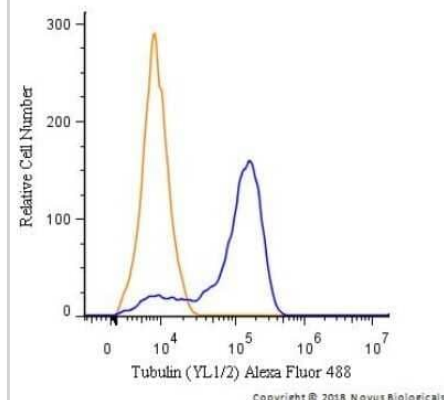
Immunocytochemistry/Immunofluorescence: alpha Tubulin Antibody (YL1/2) - Azide and BSA Free [NBP2-80571] - IF Confocal analysis of NIH/3T3 cells using Tubulin antibody (NB600-506, 1:5). An Alexa Fluor 488-conjugated Goat to rat IgG was used as secondary antibody (green). Actin filaments were labeled with Alexa Fluor 568 phalloidin (red). DAPI was used to stain the cell nuclei (blue). Image from the standard format of this antibody.



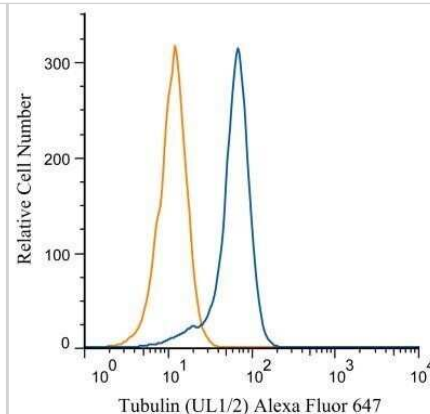
Flow Cytometry: alpha Tubulin Antibody (YL1/2) - Azide and BSA Free [NBP2-80571] - An intracellular stain was performed on NIH3T3 cells with Tubulin [YL1/2] Antibody NB600-506AF488 (blue) and a matched isotype control (orange). Cells were fixed with 4% PFA and then permeabilized with 0.1% saponin. Cells were incubated in an antibody dilution of 5 ug/mL for 30 minutes at room temperature. Both antibodies were directly conjugated to Alexa Fluor 488.



Flow Cytometry: alpha Tubulin Antibody (YL1/2) - Azide and BSA Free [NBP2-80571] - An intracellular stain was performed on PC12 cells with Tubulin [YL1/2] Antibody NB600-506AF488 (blue) and a matched isotype control (orange). Cells were fixed with 4% PFA and then permeabilized with 0.1% saponin. Cells were incubated in an antibody dilution of 5 ug/mL for 30 minutes at room temperature. Both antibodies were directly conjugated to Alexa Fluor 488.



Flow Cytometry: alpha Tubulin Antibody (YL1/2) - Azide and BSA Free [NBP2-80571] - Analysis of Alexa Fluor (R) 647 conjugate of NB600-506. An intracellular stain was performed on HeLa cells with Tubulin antibody (YL1/2) NB600-506AF647 (blue) and a matched isotype control (orange). Cells were fixed with 4% PFA and then permeablized with 0.1% saponin. Cells were incubated in an antibody dilution of 2.5 ug/mL for 30 minutes at room temperature. Both antibodies were directly conjugated to Alexa Fluor 647.





### **Novus Biologicals USA**

10730 E. Briarwood Avenue  
Centennial, CO 80112  
USA  
Phone: 303.730.1950  
Toll Free: 1.888.506.6887  
Fax: 303.730.1966  
nb-customerservice@bio-techne.com

### **Bio-Techne Canada**

21 Canmotor Ave  
Toronto, ON M8Z 4E6  
Canada  
Phone: 905.827.6400  
Toll Free: 855.668.8722  
Fax: 905.827.6402  
canada.inquires@bio-techne.com

### **Bio-Techne Ltd**

19 Barton Lane  
Abingdon Science Park  
Abingdon, OX14 3NB, United Kingdom  
Phone: (44) (0) 1235 529449  
Free Phone: 0800 37 34 15  
Fax: (44) (0) 1235 533420  
info.EMEA@bio-techne.com

### **General Contact Information**

www.novusbio.com  
Technical Support: nb-technical@bio-techne.com  
Orders: nb-customerservice@bio-techne.com  
General: novus@novusbio.com

### **Products Related to NBP2-80571**

---

NBP2-33376H	Blue Marker Antibody (6F4-F6) [HRP]
HAF005	Goat anti-Rat IgG Secondary Antibody [HRP]
F0105B	Goat anti-Rat IgG Secondary Antibody [Phycoerythrin]
NBP2-21947-0.1mg	Rat IgG2a Isotype Control (2A3)

---

### **Limitations**

This product is for research use only and is not approved for use in humans or in clinical diagnosis. Primary Antibodies are guaranteed for 1 year from date of receipt.

For more information on our 100% guarantee, please visit [www.novusbio.com/guarantee](http://www.novusbio.com/guarantee)

Earn gift cards/discounts by submitting a review: [www.novusbio.com/reviews/submit/NBP2-80571](http://www.novusbio.com/reviews/submit/NBP2-80571)

Earn gift cards/discounts by submitting a publication using this product:  
[www.novusbio.com/publications](http://www.novusbio.com/publications)

