

# Product Datasheet

## PD-L1 Antibody (PDL1/2746)

### NBP2-80490-100ug

Unit Size: 100 ug

Store at 4°C.

[www.novusbio.com](http://www.novusbio.com)



[technical@novusbio.com](mailto:technical@novusbio.com)

#### Publications: 2

Protocols, Publications, Related Products, Reviews, Research Tools and Images at:  
[www.novusbio.com/NBP2-80490](http://www.novusbio.com/NBP2-80490)

Updated 11/8/2021 v.20.1

Earn rewards for product  
reviews and publications.

Submit a publication at [www.novusbio.com/publications](http://www.novusbio.com/publications)

Submit a review at [www.novusbio.com/reviews/destination/NBP2-80490](http://www.novusbio.com/reviews/destination/NBP2-80490)



**NBP2-80490-100ug**

PD-L1 Antibody (PDL1/2746)

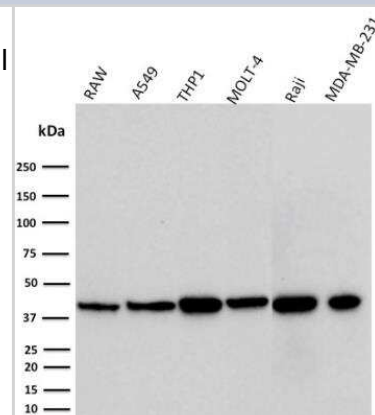
Product Information	
Unit Size	100 ug
Concentration	0.2 mg/ml
Storage	Store at 4°C.
Clonality	Monoclonal
Clone	PDL1/2746
Preservative	0.05% Sodium Azide
Isotype	IgG2b Kappa
Purity	Protein A or G purified
Buffer	10 mM PBS with 0.05% BSA
Target Molecular Weight	37-50 kDa

Product Description	
Host	Mouse
Gene ID	29126
Gene Symbol	CD274
Species	Human, Mouse
Immunogen	Recombinant fragment (around aa 39-191) of human PD-L1 (PDL1/2746) protein (exact sequence is proprietary)

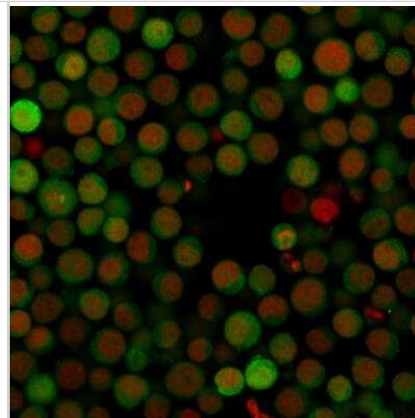
Product Application Details	
Applications	Western Blot, ELISA, Flow Cytometry, Immunocytochemistry/ Immunofluorescence, Immunohistochemistry, Immunohistochemistry-Paraffin, Protein Array
Recommended Dilutions	Western Blot 1-2ug/ml, Flow Cytometry 1-2ug/million cells, ELISA 1:100-1:2000, Immunohistochemistry 1-2ug/ml, Immunocytochemistry/ Immunofluorescence 1-2ug/ml, Immunohistochemistry-Paraffin 1-2ug/ml, Protein Array
Application Notes	ELISA: For coating, order antibody without BSA). Immunohistochemistry (Formalin-fixed): 1-2ug/ml for 30 minutes at RT. Staining of formalin-fixed tissues requires heating tissue sections in 10mM Tris with 1mM EDTA, pH 9.0, for 45 min at 95C followed by cooling at RT for 20 minutes. Optimal dilution for a specific application should be determined.

**Images**

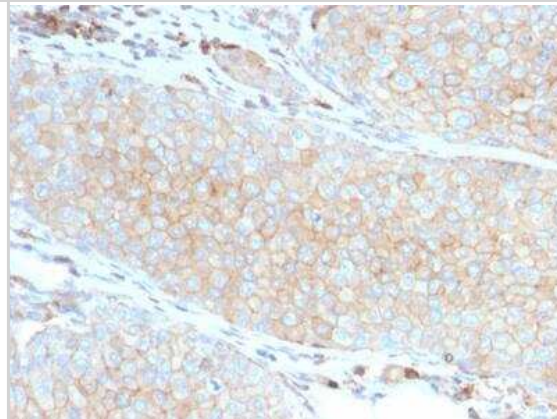
Western Blot: PD-L1 Antibody (PDL1/2746) [NBP2-80490] - Western Blot Analysis of RAW, A549, THP1, MOLT-4, Raji, and MDA-MB-231 cell lysates using PD-L1 Mouse Monoclonal Antibody (PDL1/2746).



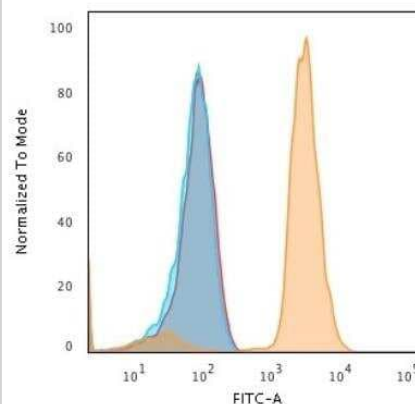
Immunocytochemistry/Immunofluorescence: PD-L1 Antibody (PDL1/2746) [NBP2-80490] - Immunofluorescent staining of Jurkat cells. PD-L1 Antibody (PDL1/2746) followed by goat anti-Mouse IgG-CF488 (Green). Nuclei are stained with Reddot (Red)



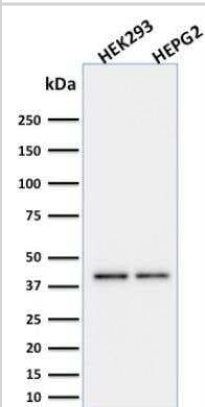
Immunohistochemistry-Paraffin: PD-L1 Antibody (PDL1/2746) [NBP2-80490] - Formalin-fixed, paraffin-embedded human Basal Cell Carcinoma stained with PD-L1 Antibody (PDL1/2746).



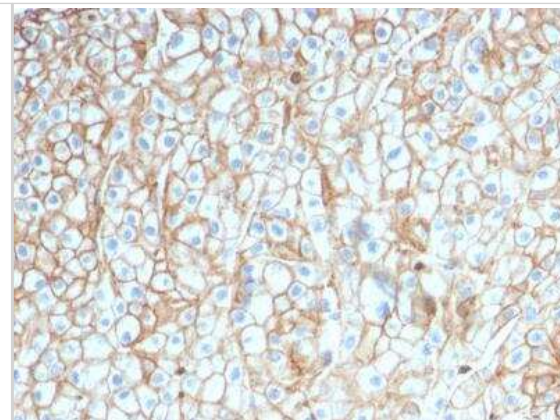
Flow Cytometry: PD-L1 Antibody (PDL1/2746) [NBP2-80490] - Flow Cytometric Analysis of human Jurkat cells. PD-L1 Antibody (PDL1/2746) followed by goat anti-Mouse IgG-CF488 (Orange); cells alone (Blue); Isotype Control (Red).



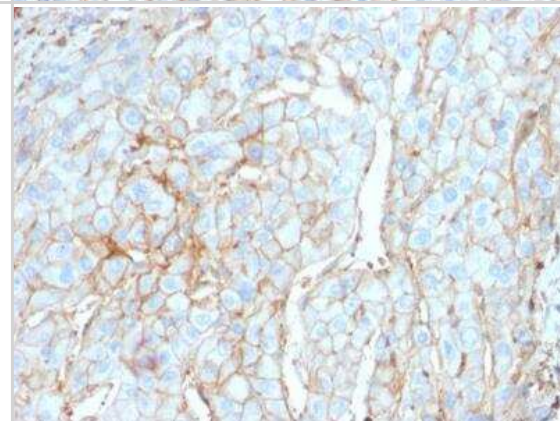
Western Blot: PD-L1 Antibody (PDL1/2746) [NBP2-80490] - Western Blot Analysis of HEK293 and HepG2 cell lysates using PD-L1 Mouse Monoclonal Antibody (PDL1/2746).



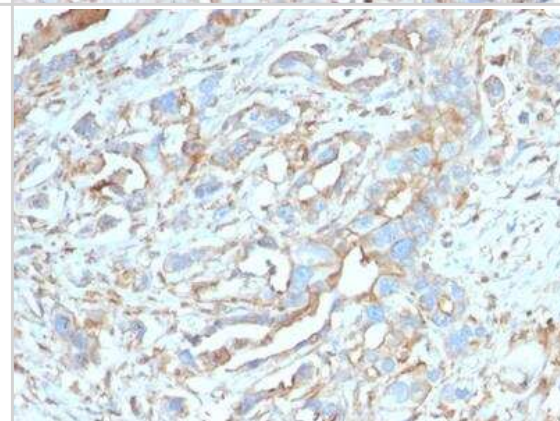
Immunohistochemistry-Paraffin: PD-L1 Antibody (PDL1/2746) [NBP2-80490] - Formalin-fixed, paraffin-embedded human Lung SCC stained with PD-L1 Antibody (PDL1/2746).



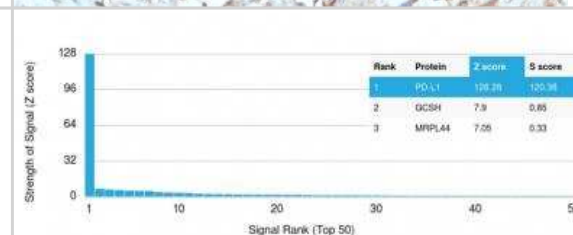
Immunohistochemistry-Paraffin: PD-L1 Antibody (PDL1/2746) [NBP2-80490] - Formalin-fixed, paraffin-embedded human Cervical Carcinoma stained with PD-L1 Antibody (PDL1/2746).



Immunohistochemistry-Paraffin: PD-L1 Antibody (PDL1/2746) [NBP2-80490] - Formalin-fixed, paraffin-embedded human Breast Carcinoma stained with PD-L1 Antibody (PDL1/2746).



Protein Array: PD-L1 Antibody (PDL1/2746) [NBP2-80490] - Analysis of Protein Array containing more than 19,000 full-length human proteins using PD-L1 Antibody (PDL1/2746).



## Publications

Lee J, Hwang H, Kang D et al. Therapy-induced senescent cancer cells contribute to cancer recurrence by providing a PD-L1 umbrella regulated by ribophorin 1 Research Square 2023-10-09 (WB, ICC/IF, Human)

Chen Y, Wang L, Zheng M Et Al. Engineered extracellular vesicles for concurrent Anti-PDL1 immunotherapy and chemotherapy Bioact Mater 2021-11-25 [PMID: 34820569]



### **Novus Biologicals USA**

10730 E. Briarwood Avenue  
Centennial, CO 80112  
USA

Phone: 303.730.1950

Toll Free: 1.888.506.6887

Fax: 303.730.1966

[nb-customerservice@bio-techne.com](mailto:nb-customerservice@bio-techne.com)

### **Bio-Techne Canada**

21 Canmotor Ave  
Toronto, ON M8Z 4E6  
Canada

Phone: 905.827.6400

Toll Free: 855.668.8722

Fax: 905.827.6402

[canada.inquires@bio-techne.com](mailto:canada.inquires@bio-techne.com)

### **Bio-Techne Ltd**

19 Barton Lane  
Abingdon Science Park  
Abingdon, OX14 3NB, United Kingdom

Phone: (44) (0) 1235 529449

Free Phone: 0800 37 34 15

Fax: (44) (0) 1235 533420

[info.EMEA@bio-techne.com](mailto:info.EMEA@bio-techne.com)

### **General Contact Information**

[www.novusbio.com](http://www.novusbio.com)

Technical Support: [nb-technical@bio-techne.com](mailto:nb-technical@bio-techne.com)

Orders: [nb-customerservice@bio-techne.com](mailto:nb-customerservice@bio-techne.com)

General: [novus@novusbio.com](mailto:novus@novusbio.com)

### **Limitations**

This product is for research use only and is not approved for use in humans or in clinical diagnosis. Primary Antibodies are guaranteed for 1 year from date of receipt.

For more information on our 100% guarantee, please visit [www.novusbio.com/guarantee](http://www.novusbio.com/guarantee)

Earn gift cards/discounts by submitting a review: [www.novusbio.com/reviews/submit/NBP2-80490](http://www.novusbio.com/reviews/submit/NBP2-80490)

Earn gift cards/discounts by submitting a publication using this product:  
[www.novusbio.com/publications](http://www.novusbio.com/publications)

